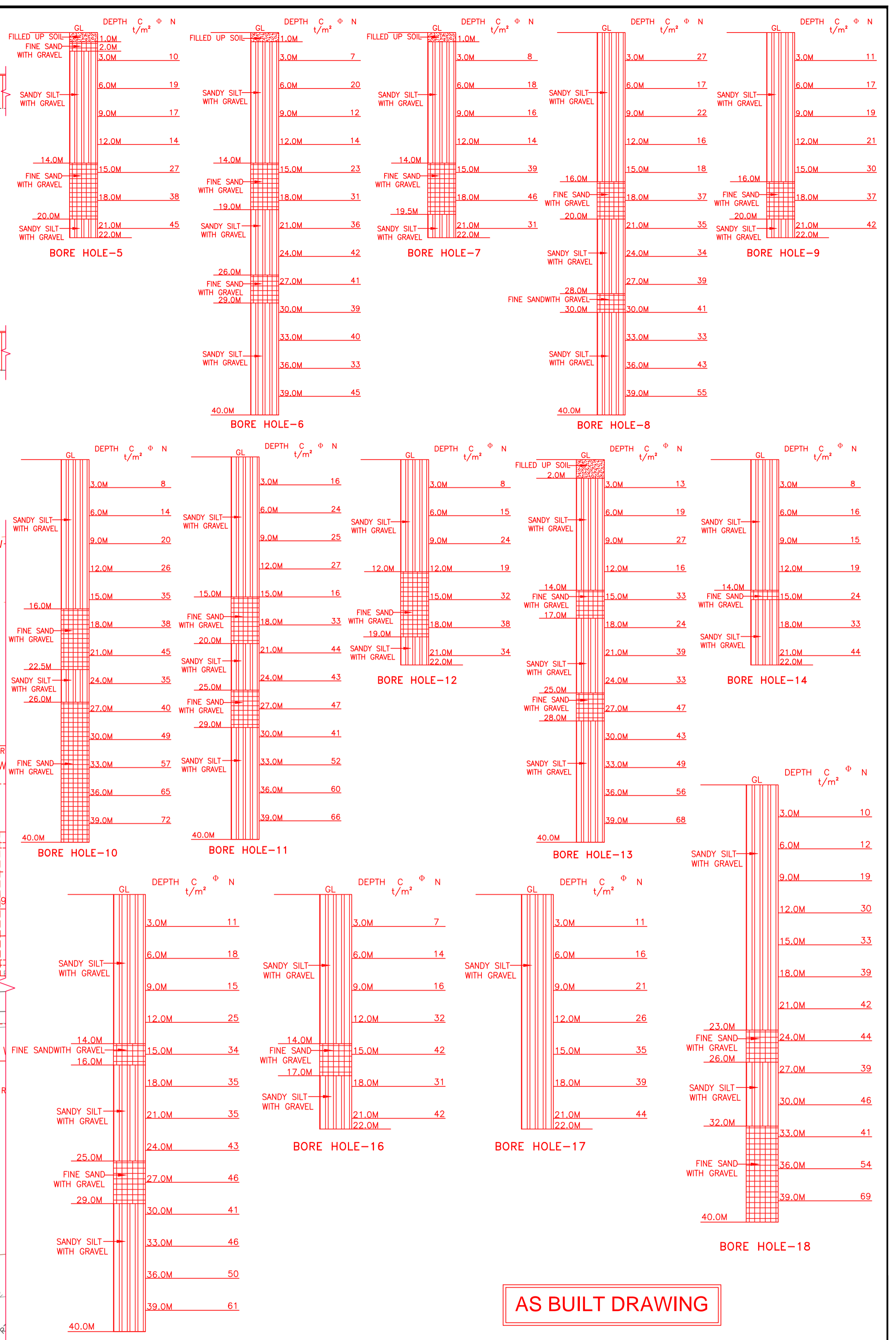


**LONGITUDINAL ELEVATION (DOWN TRACK TOWARDS CHIRAILAPATHU)**  
(SCALE :- 1:250)

FORMATION LEVEL	109.178	109.215	109.252	109.290	109.327	109.364
GROUND LEVEL	103.512	104.685	105.186	105.378	105.843	106.124
CHAINAGE	520.000	540.000	560.000	580.000	600.000	620.000

**LONGITUDINAL ELEVATION (UP TRACK TOWARDS CHIRAILAPATHU)**  
(SCALE :- 1:250)

FORMATION LEVEL	109.163	109.202	109.241	109.279	109.318	109.357
GROUND LEVEL	104.271	104.450	103.755	105.378	105.286	105.795
CHAINAGE	520.000	540.000	560.000	580.000	600.000	620.000



**DRM/MGS PLAN NO.133-2016 (10/ 11)**  
**DFCCIL DRG NO:- MGS/EN/ATEPL-MGCP/L/GAD-VIADUCT/190/ 10 (SHEET 10/ 11) / 2016**

**LEGEND:**  
TR ——— TROLLEY REFUGE

**AS BUILT DRAWING**

**NOTES:-**  
1. S & T GEARS IN THE VICINITY OF THE PROPOSED STRUCTURE ARE SHIFTED.  
2. THE PROPOSED WORK ARE DONE UNDER THE SUPERVISION OF SSE/SIG/DOS & SSE/T/SEB.

REV. NO.	DATE	STATUS	DESCRIPTION	DESIGNED	DRAWN	CHECK	DESIGN CONS. (PC.)
D							
C							
B							
A							
0	18.01.21	D	AS BUILT DRAWING	KSN	VKS	ASV	ASV

**DEDICATED FREIGHT CORRIDOR CORPORATION OF INDIA LTD. EASTERN CORRIDOR**

(ASC Infratech Pvt. Ltd.)	ATEPL-MGCP/JV	RE	TL
		PMC - RODIC CONSULTANTS PVT. LTD.	

**CLIENT: DEDICATED FREIGHT CORRIDOR CORPORATION OF INDIA LTD.**

**CONTRACTOR: ATEPL - MGCP/JV**

**PROJECT:** Design and Construction of Formation in Embankments/Cuttings including blanketing, Viaducts, Rail Flyover, Bridges (Major, Minor & RUBS), Supply and Spreading of Ballast and other related infrastructural works for double track electrified railway line on Design Build Lump Sum Basis from Howrah end approach of DFC Sone bridge to Chirailapathu station of IR towards Howrah & to New Sonagar station towards Garhwa and at Dehri-on-Sone yard from Km. 3.16 to Km. 5.38 in connection with Eastern Dedicated Freight Corridor.

**PROJECT NO: P151012**

**TITLE:** GENERAL ARRANGEMENT DRAWING OF PROPOSED VIADUCT BETWEEN CHAINAGE : 0+520 TO 2+228 (G1)  
प्रस्तावित वायाडक्ट की सामान्य व्यवस्था ड्राइंग श्रृंखलामा. 0+520 से 2+228 (G1) के बीच में

**COP:**

**SCALE:**

**(SHEET 10 OF 11)**

**ASC INFRA TECH PVT LTD.**

**DRAWING NO: 1/V/D/G1/0001/0**