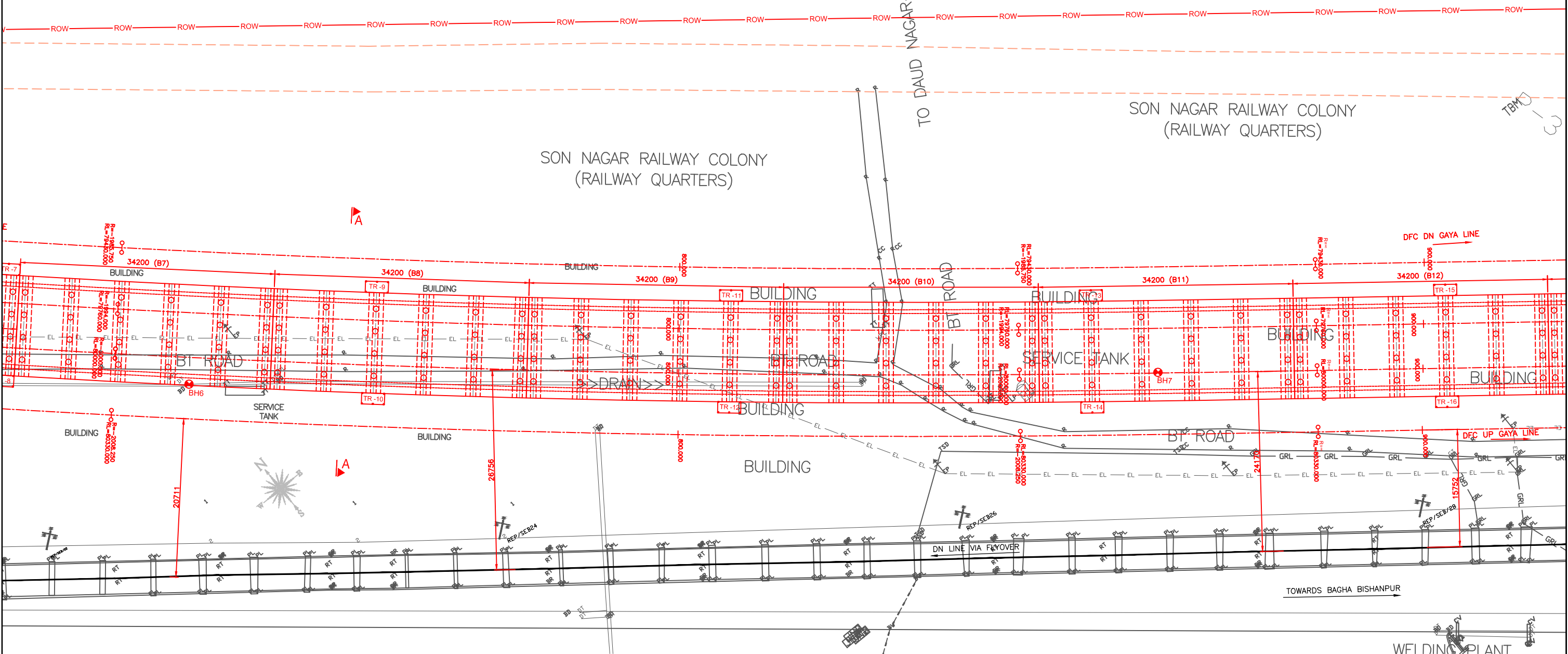


LONGITUDINAL ELEVATION
(SCALE :- 1:250)

FORMATION LEVEL	110.627	110.698	110.768	110.838	110.909	110.979	111.050	111.120	111.190	111.261
GROUND LEVEL	106.725	106.872	107.063	107.017	107.061	107.119	107.049	106.900	107.078	107.112
CHAINAGE	720.000	740.000	760.000	780.000	800.000	820.000	840.000	860.000	880.000	900.000



PLAN
(SCALE :- 1:250)

- NOTES:-
- S & T GEARS IN THE VISINTY OF THE PROPOSED STRUCTURE ARE SHIFTED.
 - THE PROPOSED WORK ARE DONE UNDER THE SUPERVISION OF SSE/SIG/DOS & SSE/T/SEB.

AS BUILT DRAWING

DRM/MGS PLAN NO.133-2016 (2/ 11)
DFCCIL DRG NO:- MGS/EN/ATEPL-MGCP/AD-VIADUCT/182/ 2 (SHEET 2/ 11) / 2016

LEGEND:
TR ——— TROLLEY REFUGE

D							
C							
B							
A							
0	18.01.21	D	AS BUILT DRAWING	KSN	VKS	ASV	ASV
REV. NO.	DATE	STATUS	DESCRIPTION	DESIGNED	DRAWN	CHECK	DESIGN CONS. (PC.)



DEDICATED FREIGHT CORRIDOR CORPORATION OF INDIA LTD. EASTERN CORRIDOR

(ASC Infratech Pvt. Ltd.)	CPM	RE	TL
ATEPL - MGCP JV		PMC - RODIC CONSULTANTS PVT. LTD.	

CLIENT: **DEDICATED FREIGHT CORRIDOR CORPORATION OF INDIA LTD.**

CONTRACTOR: **ATEPL - MGCP JV**

PROJECT: Design and Construction of Formation in Embankments/Cuttings including blanketing, Viaducts, Rail Flyover, Bridges (Major, Minor & RUBs) Supply and Spreading of Ballast and other related infrastructural works for double track electrified railway line on Design Build Lump Sum Basis from Howrah end approach of DFC Sone bridge to Chirailapathu station of IR towards Howrah & to New Sonnagar station towards Garwa and at Dehri-on-Sone yard from Km. 3.16 to Km. 5.38 in connection with Eastern Dedicated Freight Corridor.

TITLE: GENERAL ARRANGEMENT DRAWING OF PROPOSED VIADUCT BETWEEN CHAINAGE : 0+520 TO 2+228 (G1)
प्रस्तावित बायाउकट की सामान्य व्यवस्था सुदृंग शृंखलामाप : 0+520 से 2+228 (G1) के बीच में (SHEET 2 OF 11)

PROJECT NO: P151012

COP: SCALE: 1/VD/G1/0001/0

DRAWING NO: 1/VD/G1/0001/0

ASC INFRA TECH PVT LTD.