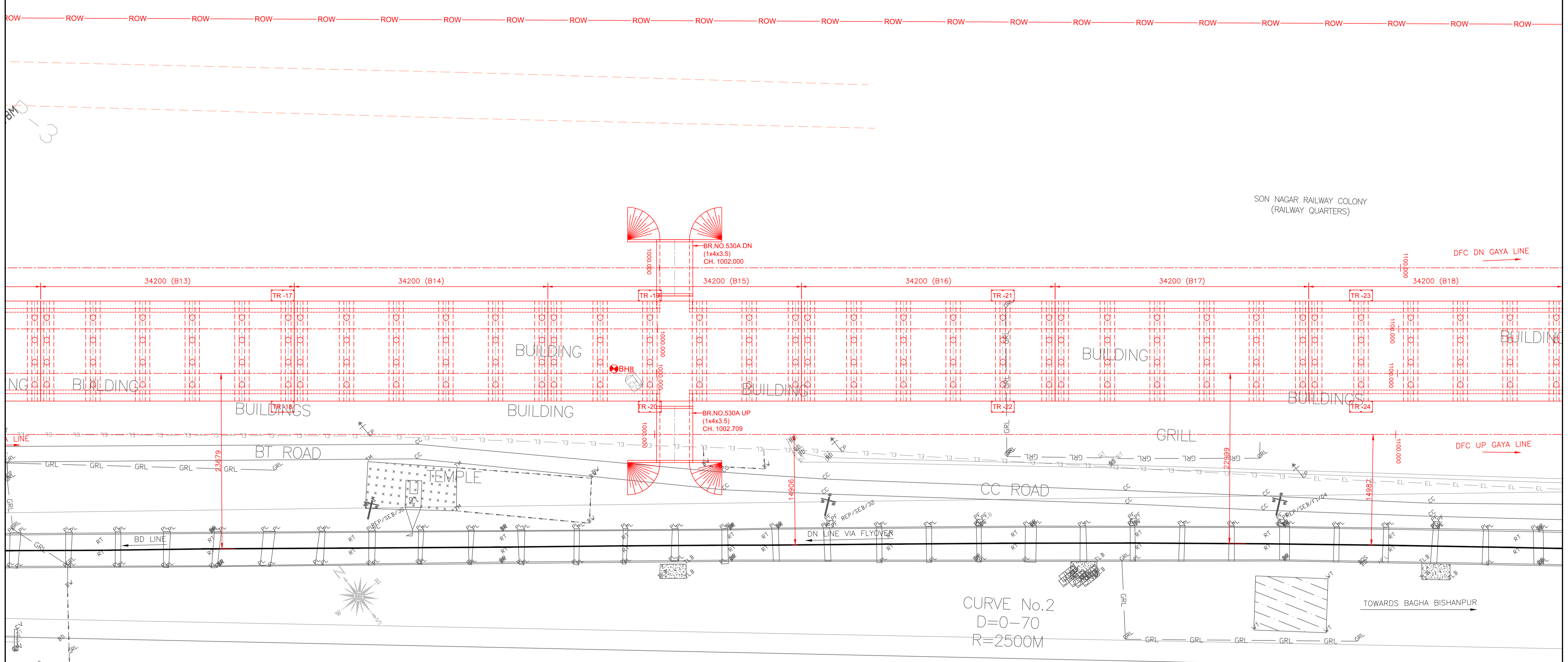


FORMATION LEVEL	111.331	111.402	111.472	111.542	111.613	111.683	111.754	111.824	111.895	111.965	112.035
GROUND LEVEL	106.996	106.880	106.835	106.800	106.591	107.103	106.846	106.810	106.838	106.859	106.735
CHAINAGE	920.000	940.000	960.000	980.000	1000.000	1020.000	1040.000	1060.000	1080.000	1100.000	1120.000



PLAN (SCALE :- 1:250)

- NOTES:-
- S & T GEARS IN THE VISINTY OF THE PROPOSED STRUCTURE ARE SHIFTED.
 - THE PROPOSED WORK ARE DONE UNDER THE SUPERVISION OF SSE/SIG/DOOS & SSE/T/SEB.

AS BUILT DRAWING

DRM/MGS PLAN NO.133-2016 (3/ 11)
 DFCCIL DRG NO:- MGS/EN/ATEPL-MGCPL/GAD-VIADUCT/183/ 3 (SHEET 3/ 11) / 2016

LEGEND:
 TR ————— TROLLEY REFUGE

D							
C							
B							
A							
0	18.01.21	D	AS BUILT DRAWING	KSN	VKS	ASV	ASV
REV. NO.	DATE	STATUS	DESCRIPTION	DESIGNED	DRAWN	CHECK	DESIGN CONS. (PC.)



DEDICATED FREIGHT CORRIDOR CORPORATION OF INDIA LTD. EASTERN CORRIDOR

(ASC Infratech Pvt. Ltd.)	CPM	RE	TL
ATEPL-MGCPL JV	PMC - RODIC CONSULTANTS PVT. LTD.		

CLIENT: **DEDICATED FREIGHT CORRIDOR CORPORATION OF INDIA LTD.**

CONTRACTOR: **ATEPL - MGCPL JV**

PROJECT: Design and Construction of Formation in Embankments/Cuttings including blanketing, Viaducts, Rail Flyover, Bridges (Major, Minor & RUBs), Supply and Spreading of Ballast and other related infrastructural works for double track electrified railway line on Design Build Lump Sum Basis from Howrah end approach of DFC Sone bridge to Chirailapathu station of IR towards Howrah & to New Sonnagar station towards Garhwa and at Dehri-on-Sone yard from Km. 3.16 to Km. 5.38 in connection with Eastern Dedicated Freight Corridor.

TITLE: GENERAL ARRANGEMENT DRAWING OF PROPOSED VIADUCT BETWEEN CHAINAGE : 0+520 TO 2+228 (G1) प्रस्तावित वायाडक्ट की सामान्य व्यवस्था ड्राइंग श्रृंखला नं. 0+520 से 2+228 (G1) के बीच में (SHEET 3 OF 11)

PROJECT NO: P151012

COP:

SCALE:

ASC INFRA TECH PVT LTD. DRAWING NO: 1/VD/G1/0001/0