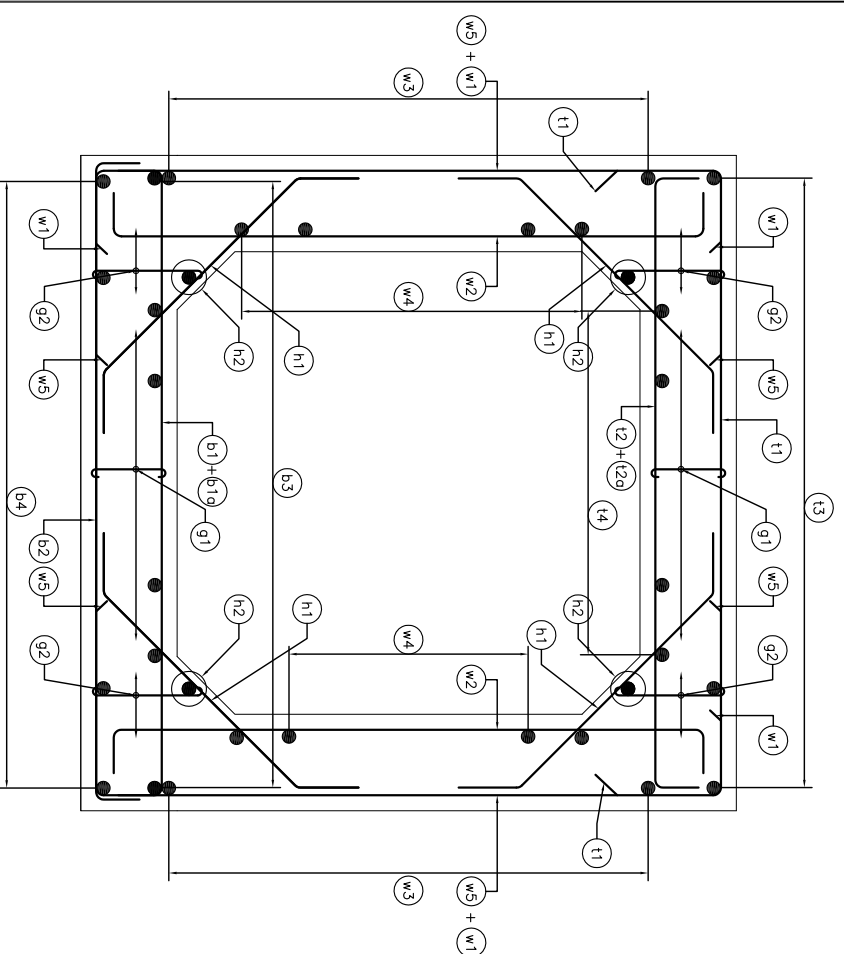
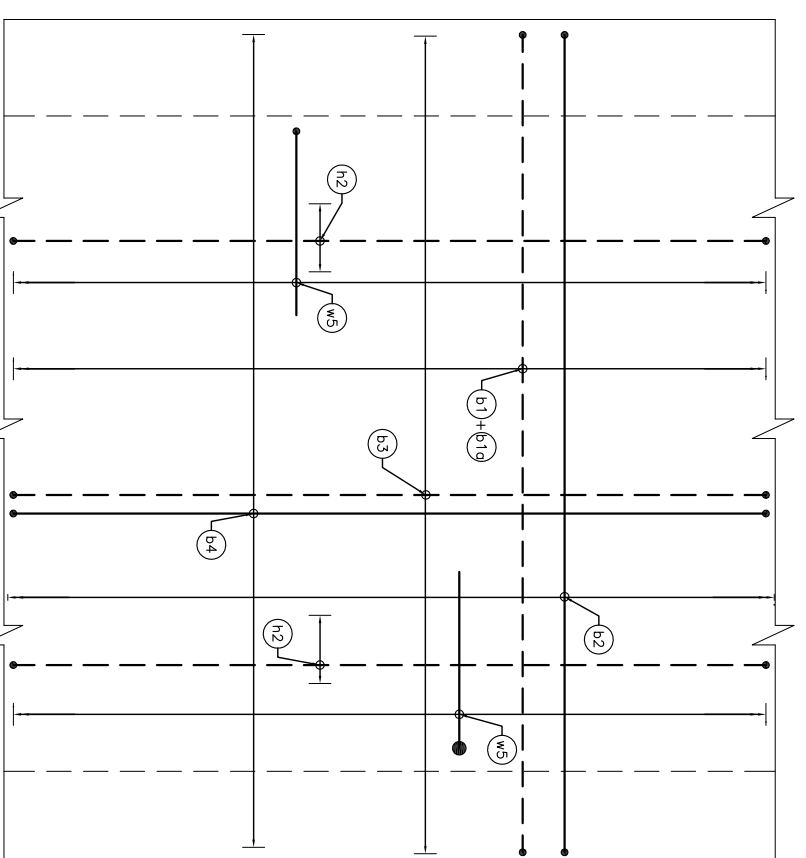


NOTES:-

- ALL DIMENSIONS ARE IN MILLIMETERS AND LEVELS ARE IN METERS UNLESS OTHERWISE SPECIFIED.
- DIMENSIONS ARE NOT TO BE SCALED. ONLY WRITTEN DIMENSIONS SHALL BE FOLLOWED.
- EXPOSURE CONDITION-MODERATE
- HIGH YIELD STRENGTH DEFORMED / THERMO MECHANICAL TREATED (TMT) BAR OF GRADE Fe-500 SATISFYING THE REQUIREMENT OF IS. 1786-1985 SHALL BE USED AS REINFORCEMENT.
- LAPPING OF BARS SHOULD BE MINIMISED AND WHEREVER NECESSARY LAPPING SHALL BE STAGGERED WITH CENTER TO CENTER OF LAP SPACES NOT LESS THAN 13 TIMES THE LAP LENGTH. MINIMUM LENGTH OF LAP SHALL BE (6d) OR (25d+150). (WHICHEVER IS MAXIMUM), WHERE 'd' IS DIAMETER OF SMALLER BAR OF THE TWO BARS BEING LAPPED
- GRADE OF CONCRETE - M35
GRADE OF STEEL - FE500
CLEAR COVER FOR EARTH FACE AS -50mm
FOR OTHER FACE AS - 50mm



REINFORCEMENT DETAILS



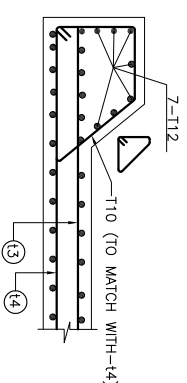
PLAN OF BOTTOM SLAB

(HAUNCH BARS NOT SHOWN IN PLAN)

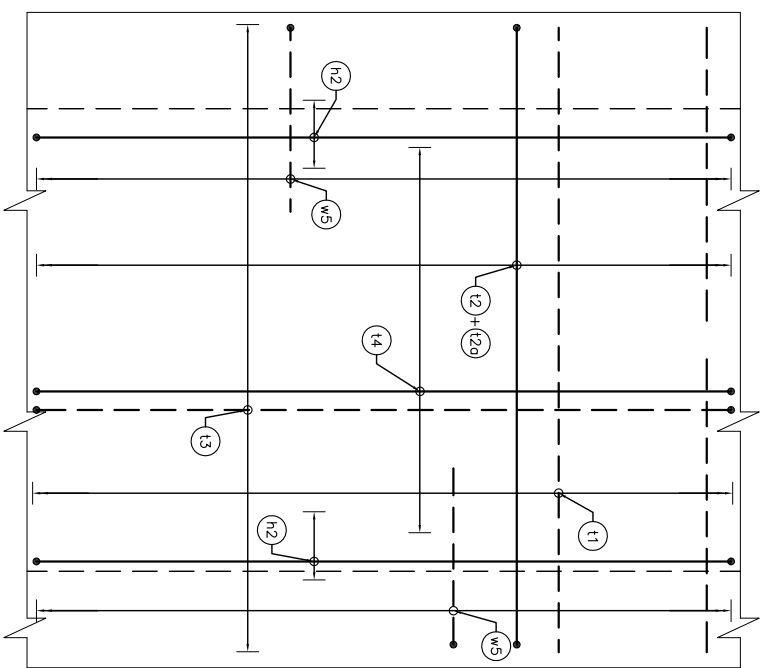
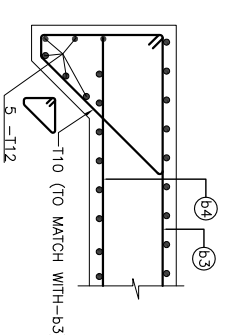
SCHEDULE OF REINFORCEMENT (BOX)

BAR MARK	BAR SHAPE	BAR DIA	SPACING	a	b	c
t1		10	200mm c/c	500	2600	500
t2		12	200mm c/c	200	2600	200
t20		10	200mm c/c	200	2600	200
t3		10	180mm c/c	L1-100	-	-
t4		10	180mm c/c	L1-100	-	-
b1		10	200mm c/c	200	3150	200
b10		12	200mm c/c	200	3150	200
b2		10	200mm c/c	500	3150	500
b3		10	180mm c/c	L1-100	-	-
b4		10	180mm c/c	L1-100	-	-
w1		12	200mm c/c	300	2600	300
w2		12	200mm c/c	200	2600	200
w3		10	180mm c/c	L1-100	-	-
w4		10	180mm c/c	L1-100	-	-
w5		12	200mm c/c	900	2600	900
h1		10	200mm c/c	150	1080	150
h2		10	4x1 nos.	L1-100	-	-
g1		10	180mm ALONG LENGTH AND 200mm ALONG BARREL	100	250	-
g2		10	180mm ALONG LENGTH AND 200mm ALONG BARREL	100	VARIES	-

REINF. DETAIL OF TOP SLAB EARTH RETAINER
(DETAIL 'Y' AS PER GAD)
(SCALE - 1:20)



REINF. DETAIL OF BOTTOM SLAB KEY
(DETAIL 'X' AS PER GAD)
(SCALE - 1:20)



PLAN OF TOP SLAB
(HAUNCH BARS NOT SHOWN IN PLAN)

LEGEND

TOP BAR	
BOTTOM BAR	

REV/ NO.	DATE	STATUS	DESCRIPTION	DESIGNED	DRAWN	CHECK	DESIGN CONS.
C							
B	22.03.16	P	REVISED AS PER PLAN & PROFILE	SH	SS	KSN	ASV
A	11.08.15	P	REVISED AS PER PLAN & PROFILE	AOS	SS	SPD	ASV
0	30.08.14	P	FIRST SUBMISSION	AOS	SS	SPD	ASV



DEDICATED FREIGHT CORRIDOR CORPORATION OF INDIA LTD. EASTERN CORRIDOR



SHRI MANOJ ENTERPRISES
SR. MANAGER (BRIDGE)

IL & FS Engg-GPT JV

CPM

RE

ICT / PMC

TL

APM

DY CPM

CPM

ENGC-3/DPCCL / DELHI

CM

SCALE : N.T.S.

IL & FS Engg - GPT (JV)
Dope No. 8, 20/01/13/24E
Small info Park, Cyber Towers, Road No.2, Banjara Hills, Hyderabad-500033, India
Tel: No-91-40-40409333 Fax: No-91-40-40409444

IL & FS Engg - GPT (JV)
Dope No. 8, 20/01/13/24E
Small info Park, Cyber Towers, Road No.2, Banjara Hills, Hyderabad-500033, India
Tel: No-91-40-40409333 Fax: No-91-40-40409444

Design & Construction of Rail Flyover Near Ganjkhwaja on Lumpsum Basis in different stretches between Dehri -on-Sone & Mughal Sarai of Eastern Dedicated Freight Corridor

REINFORCEMENT DETAILS OF BRIDGE NO.722
CH- 112+77.461(X2.00M)X2.00M RCC CAST-IN-SITU BOX

SCALE : N.T.S.

PROJECT : Design & Construction of Rail Flyover Near Ganjkhwaja on Lumpsum Basis in different stretches between Dehri -on-Sone & Mughal Sarai of Eastern Dedicated Freight Corridor

DETAIL : REINFORCEMENT DETAILS OF BRIDGE NO.722 CH- 112+77.461(X2.00M)X2.00M RCC CAST-IN-SITU BOX

DRG NO : ASC/IL/FS-GPT/DFCC-EC/MNBR/722/102

REVISION : B

STATUS : P

ASC InfraTech Pvt. Ltd.
H-37, 1st Floor, Sector-63, Noida - 201301 (U.P.)
Tel: 0120-2628813-20 Fax: 0120-2628813-25 Email: info@ascinfotech.com