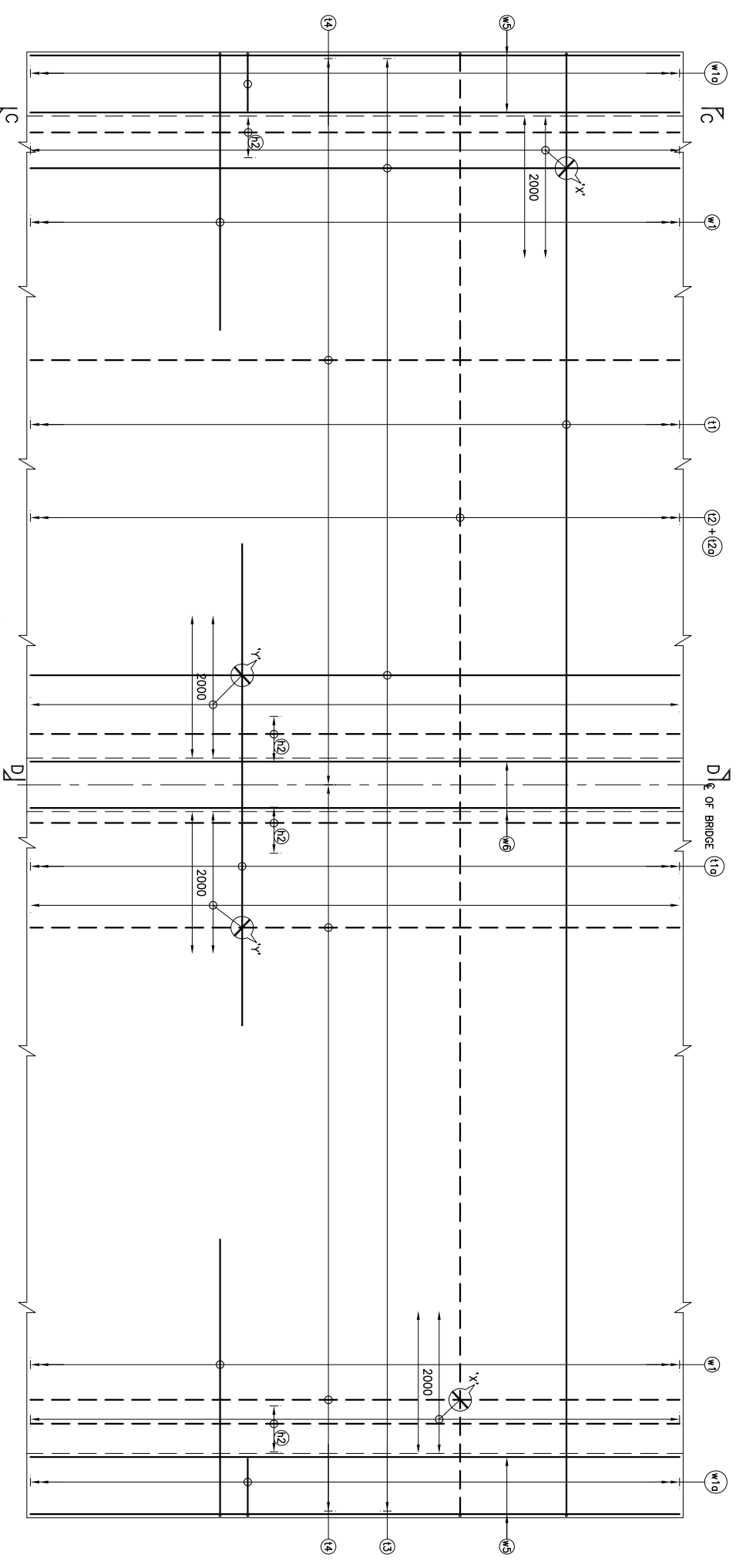


LEGEND:
 - - - - - BOTTOM FACE & NON EARTH FACE BARS
 - - - - - TOP FACE & EARTH FACE BARS

PLAN SHOWING REINFORCEMENT DETAIL OF TOP SLAB
 (SCALE 1:40)



REV/NO.	DATE	STATUS	DESCRIPTION	DESIGNED	DRAWN	CHECK	DESIGN COMS.
A	11/03/16	P	FOUNDATION DIMENSIONS REVISED	AAA	SS	KSN	ASV
0	17/02/16	P	FIRST SUBMISSION	AAA	SS	KSN	ASV



DEDICATED FREIGHT CORRIDOR CORPORATION OF INDIA LTD.
EASTERN CORRIDOR



SR. MANAGER (BRIDGE)
 SR. MANAGER (BRIDGE)
 (ASC Infracon Pvt. Ltd.)

II & FS Engg-CPT JV

RE

ICT / P/MC

TL

AMM

DY CPM

CPM

ENGG-3/DPR/CIL / DELHI

CPM

ENGG-3/DPR/CIL / DELHI

ENGG-3/DPR/CIL / DELHI

IL & FS Engg - GPT (JV)
 Dope No. 8/2017/1374E
 Smalli no Park, Cyber Towers, Road No. 2,
 Banjara Hills, Hyderabad-500033, India
 TEL: No-91-40-40409333 Fax: No-91-40-40409444

IL&FS
G-P-T

Design & Construction of Rail Flyover Near Ganjithwaja on
 Lumpsum Basis in different stretches between Dehri -on-Sone
 & Mughal Sarai of Eastern Dedicated Freight Corridor
 CH- 113+180.136(2) X 9.000M X 4.052M (RCC FRAMR)

REINFORCEMENT DETAILS OF BRIDGE NO.723
 CH- 113+180.136(2) X 9.000M X 4.052M (RCC FRAMR)

SCALE: N.T.S.

DPR/CIL DRG. NO. ASC/T/RS-GPT/DPR-RC/ANBR/723/102 REVISION A

ASG Infracon Pvt. Ltd. (SHEET 1 OF 2)

H-37, 1st Floor, Sector-63, Noida - 201301 (UP) Tel: 0120-268813-20
 Fax: 120-268813-253, Email: info@ascinfracon.com

STATUS **P**