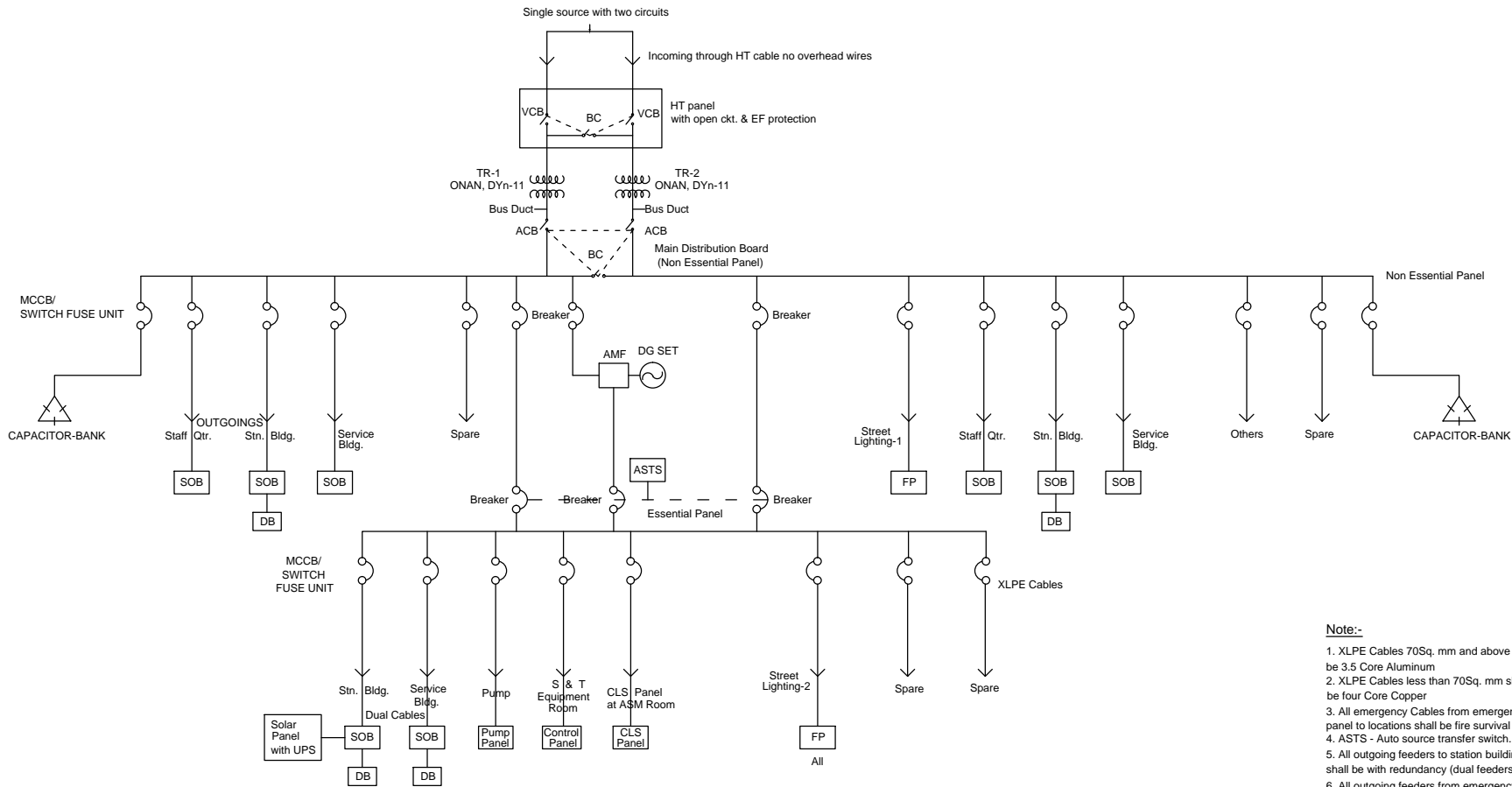


CONCEPT PLAN FOR NON - TRACTION POWER DISTRIBUTION SYSTEM



- Note:-**
1. XLPE Cables 70Sq. mm and above shall be 3.5 Core Aluminum
 2. XLPE Cables less than 70Sq. mm shall be four Core Copper
 3. All emergency Cables from emergency panel to locations shall be fire survival type.
 4. ASTS - Auto source transfer switch.
 5. All outgoing feeders to station building, shall be with redundancy (dual feeders).
 6. All outgoing feeders from emergency panel shall be laid with dual cable as spare.
 7. All normal supply SDB shall be with dual incomers