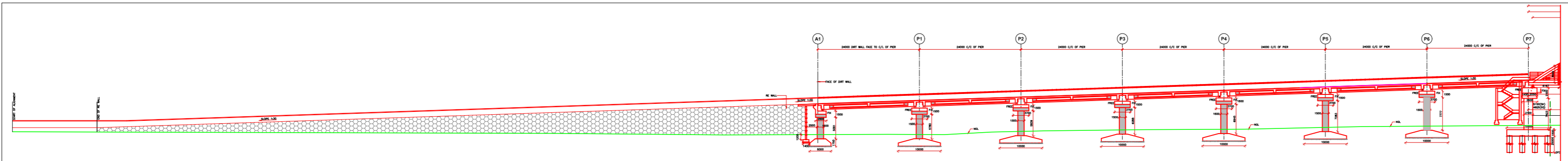
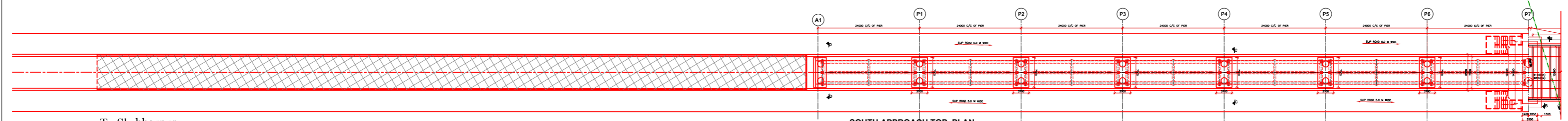


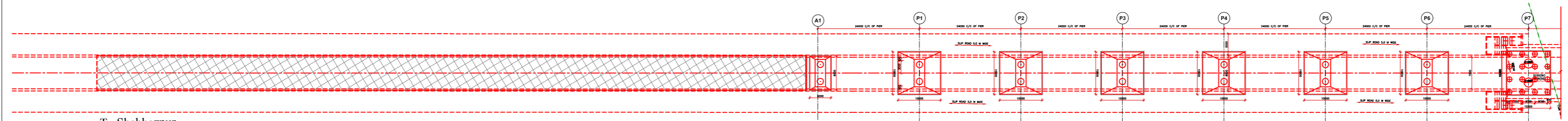
- GENERAL NOTES:-**
1. ALL DIMENSIONS ARE IN MILLIMETERS AND LEVEL IN METERS EXCEPT WHERE OTHERWISE STATED.
 2. NO DIMENSIONS SHALL BE SCALED FROM THIS DRAWING.
 3. DETAILS OF REINFORCED EARTH WALL INDICATED IN THE DRAWING TENTATIVE. DETAILS DESIGN OF REINFORCED EARTH WALL SHALL BE SUBMITTED AFTER PROOF CHECKING.
 4. DETAILS OF APPROACH SPAN INDICATED IN THE DRAWING TENTATIVE. DETAILS DESIGN OF APPROACH SPAN SHALL BE SUBMITTED AFTER PROOF CHECKING.
 5. THIS DRAWING SHALL BE READ IN CONJUNCTION WITH SHEET 1 OF 2 AND 2 OF 2 OF GENERAL ARRANGEMENT DRAWING.
 6. FOR OTHER NOTES REFER SHEET 1 OF 2 OF GENERAL ARRANGEMENT DRAWING.



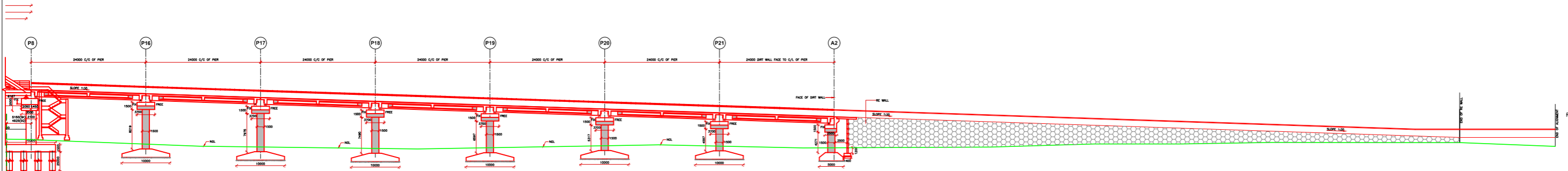
SOUTH APPROACH LONGITUDINAL SECTIONAL ELEVATION
(SCALE 1:400)



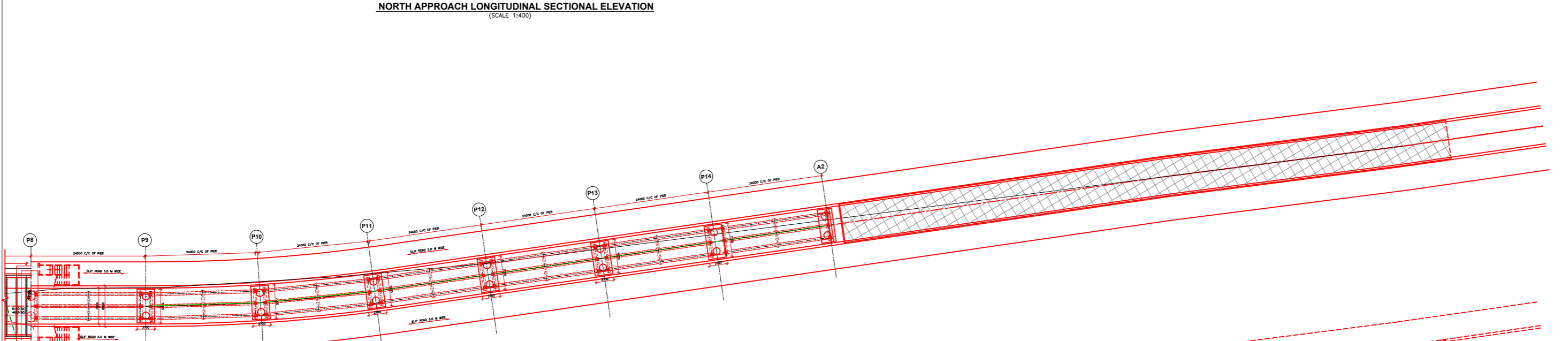
SOUTH APPROACH TOP PLAN
(SCALE 1:400)



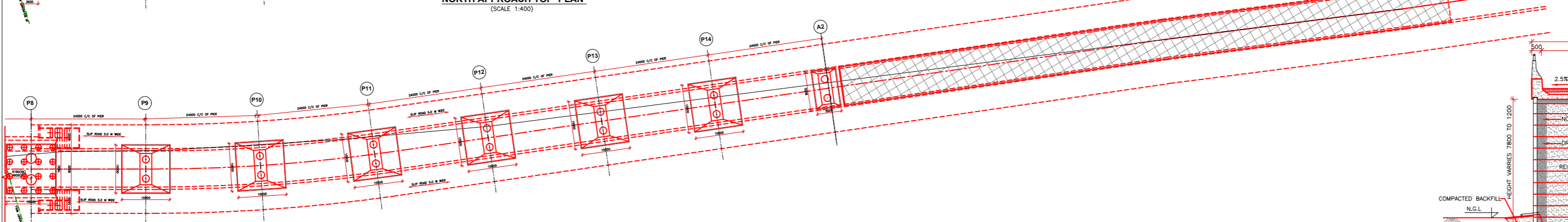
SOUTH APPROACH BOTTOM PLAN
(SCALE 1:400)



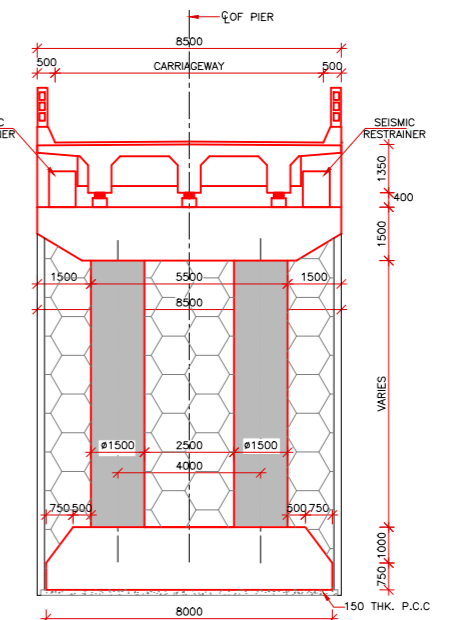
NORTH APPROACH LONGITUDINAL SECTIONAL ELEVATION
(SCALE 1:400)



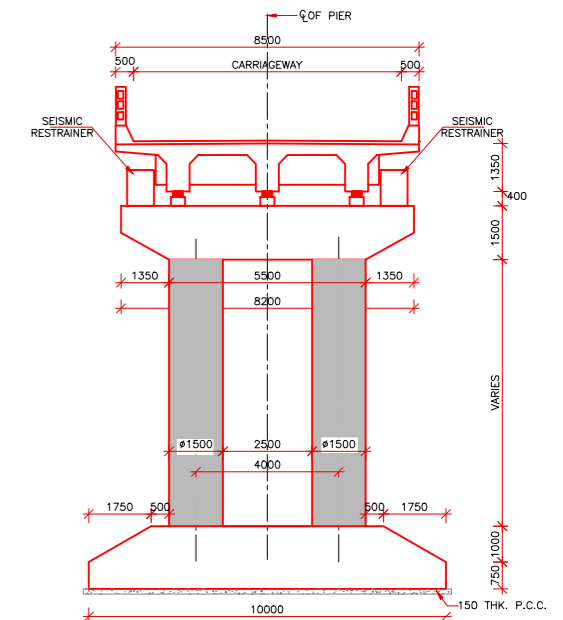
NORTH APPROACH TOP PLAN
(SCALE 1:400)



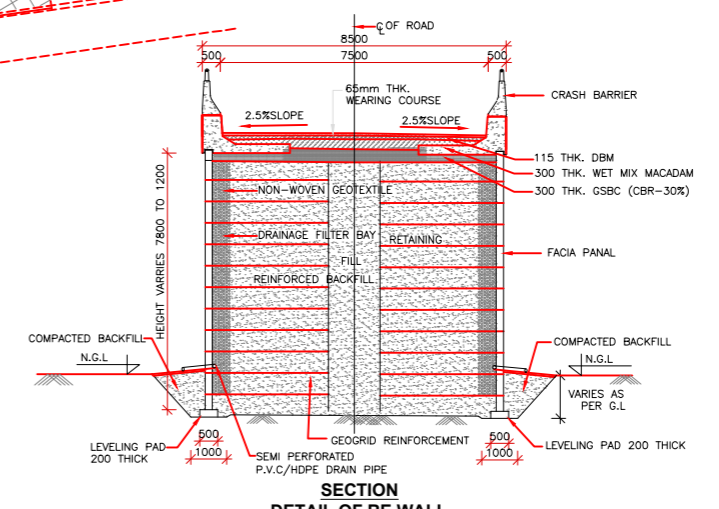
NORTH APPROACH BOTTOM PLAN
(SCALE 1:400)



AT ABUTMENT LOCATION
(SECTION AT D-D)
(SCALE 1:100)



AT APPROACH SPAN
(SECTION AT C-C)
(SCALE 1:100)



SECTION DETAIL OF RE WALL
(SCALE 1:100)

REV.	DATE	DESCRIPTION
REVISIONS		
ALLAHABAD DIVISION (N.C.RLY)		
PROPOSED TWO LANE ROB		
IN LIEU OF L-XING NO. 43/C AT RLY		
KM 97/13-14		
ON MEERUT CITY - SAHARANPUR SECTION NEAR		
KHATUALI RAILWAY STATION		
OF EASTERN DEDICATED FRIGHT CORRIDOR		
GENERAL ARRANGEMENT DRAWING		
(SKEW ANGLE AT - 17.00°)		
(SOUTH AND NORTH APPROACH-BOW STRING GIRDER-1X72.0M)		
DWG. NO.	RITES/R/REC/D/CP/ROB.43/GAD/SOUTH APPROACH	
SH. NO.	2 OF 2	
DATE	JUNE, 2020	
REV.	RD	

APM/S&T/CNB	APM/ELECT/CNB	APM/ENGG/CNB	DY.CPM/ROB	DY.CPM/CNB	CPM/MRT	SUPRENTENDING ENGINEER (R&B)	EXECUTIVE ENGINEER (R&B)	DY. EXECUTIVE ENGINEER (R&B)	(NEELAM CHAUHAN) DRAWN BY	(MUKESH KUMAR) MANAGER/D	(MD. NOMAN) MANAGER/D	(S.K. SINGH) Sr.DGM/C	(D.S. NEGI) AGM/D
DFCCIL						STATE AUTHORITIES			RITES LTD.				