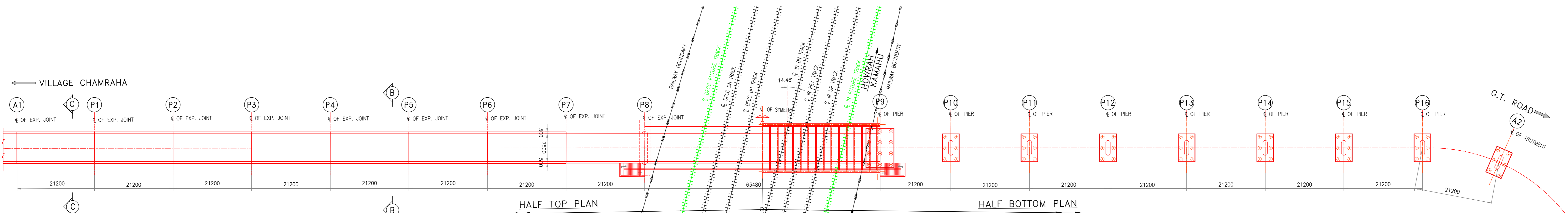
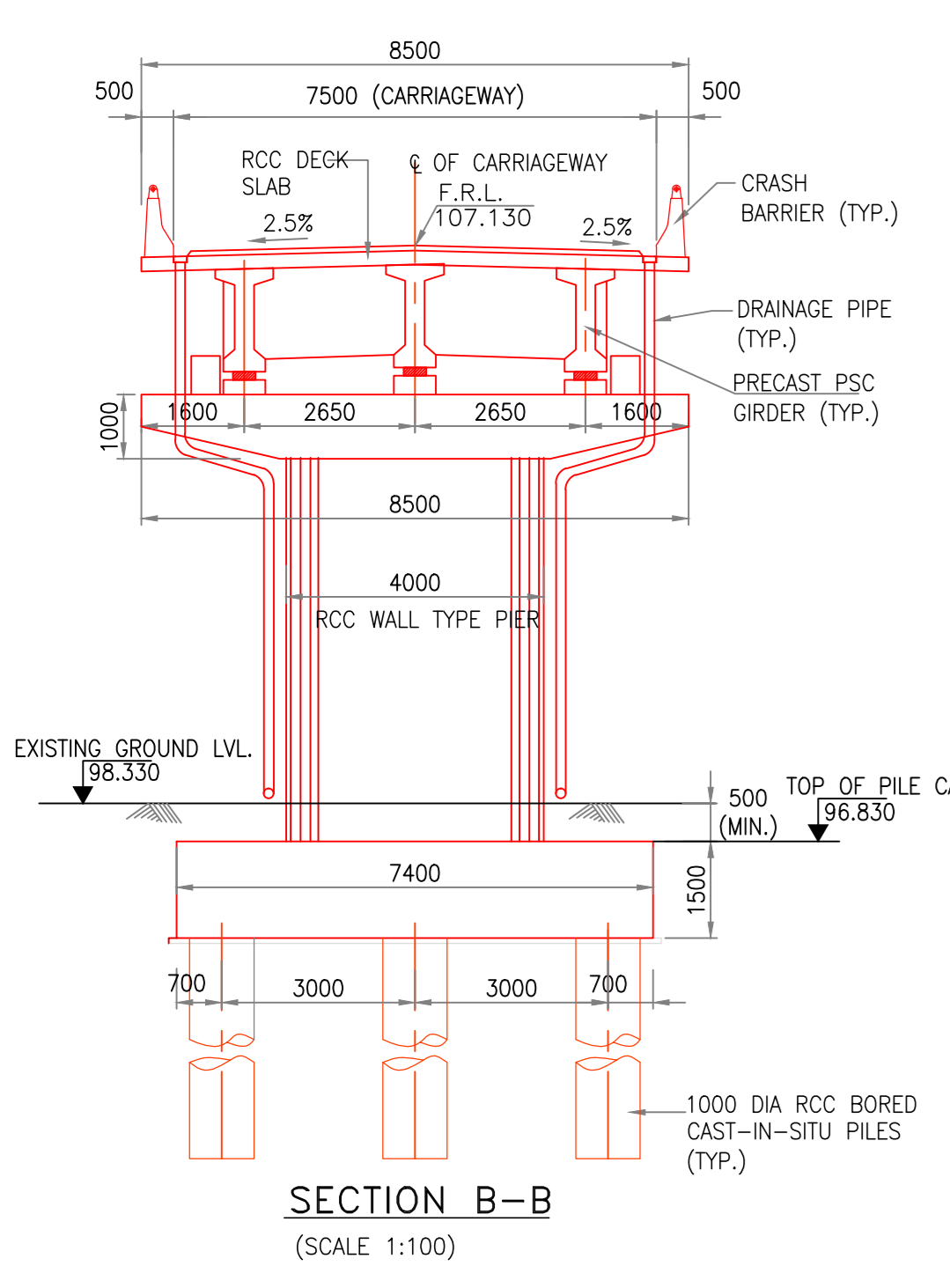


SECTIONAL ELEVATION OF OBLIGATORY & VIADUCT SPANS

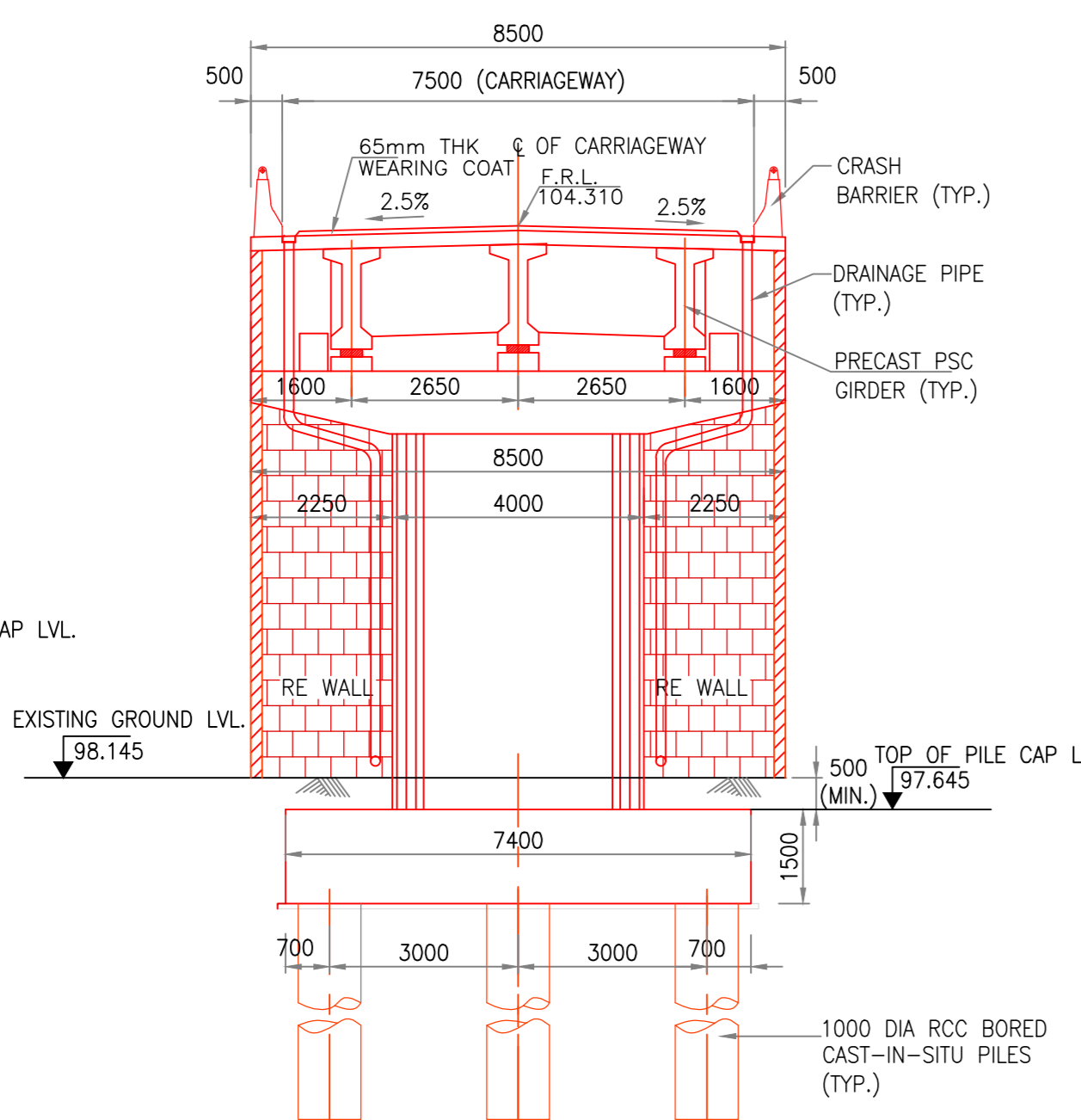


HALF TOP PLAN

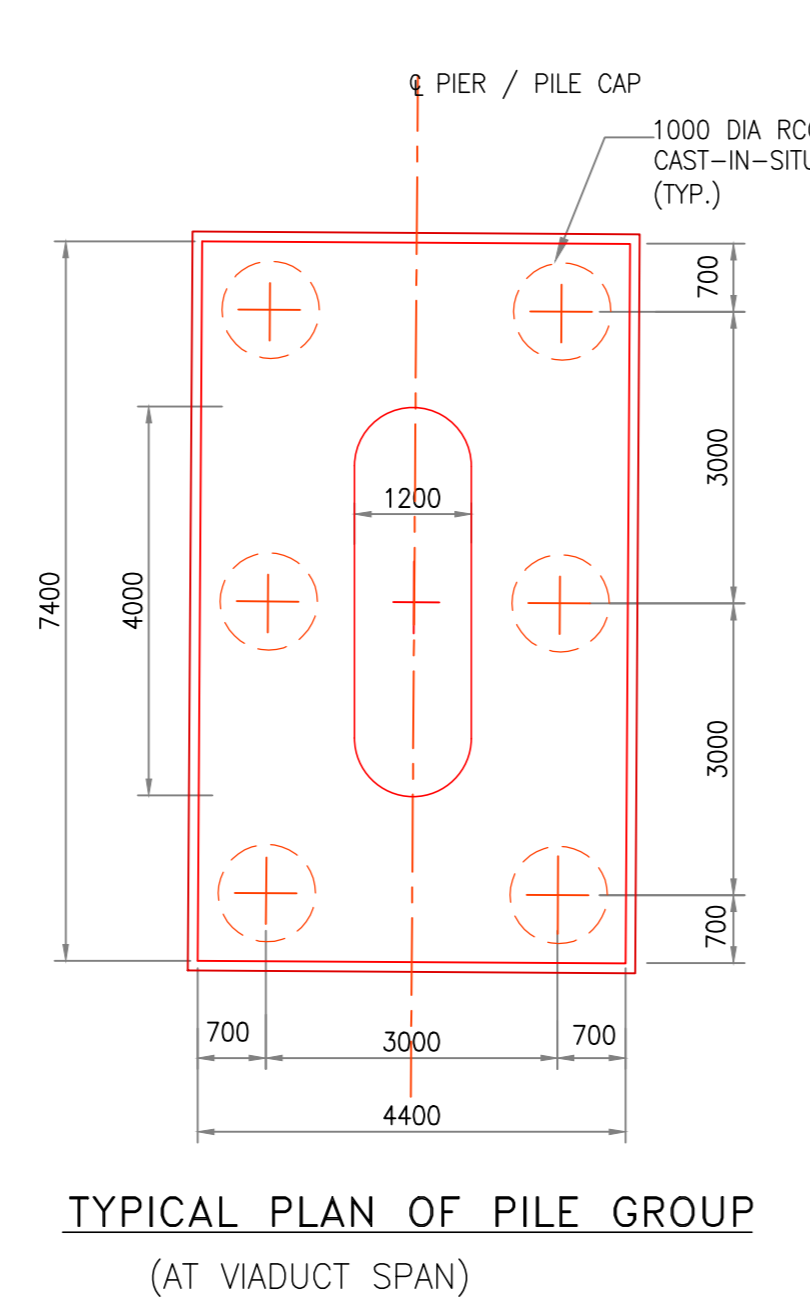
HALF BOTTOM PLAN



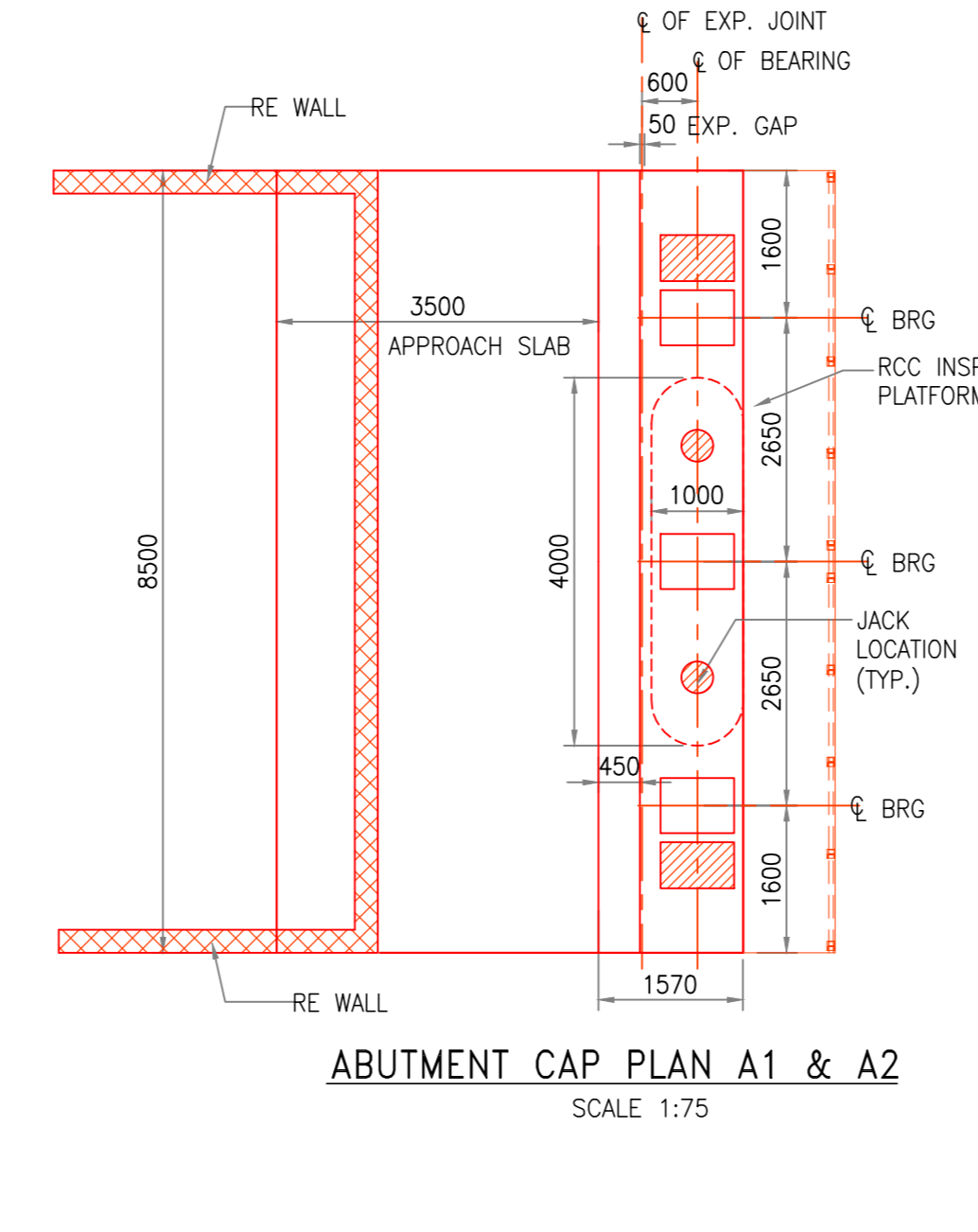
SECTION B-B
(SCALE 1:100)



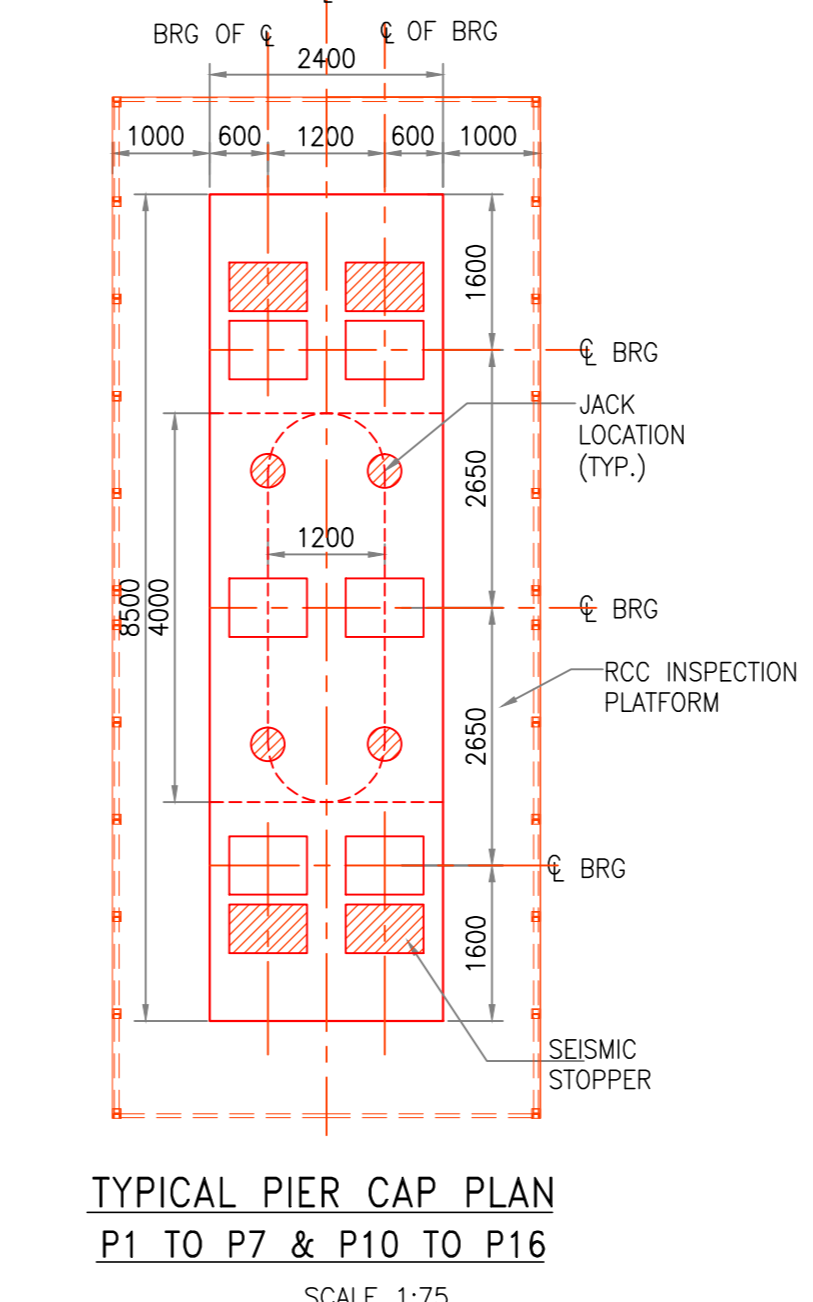
SECTION C-C
(SCALE 1:100)



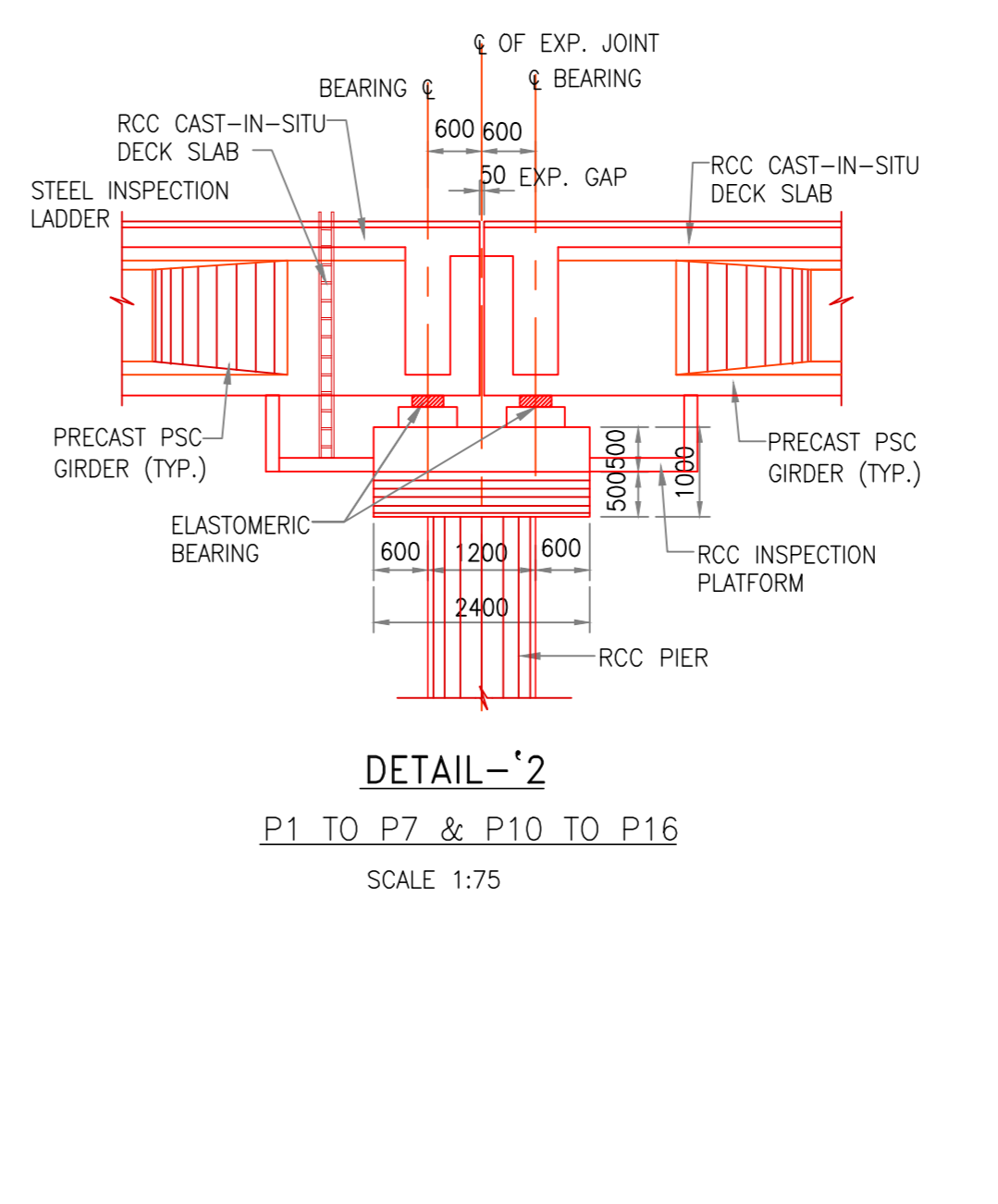
TYPICAL PLAN OF PILE GROUP
(SCALE 1:100)



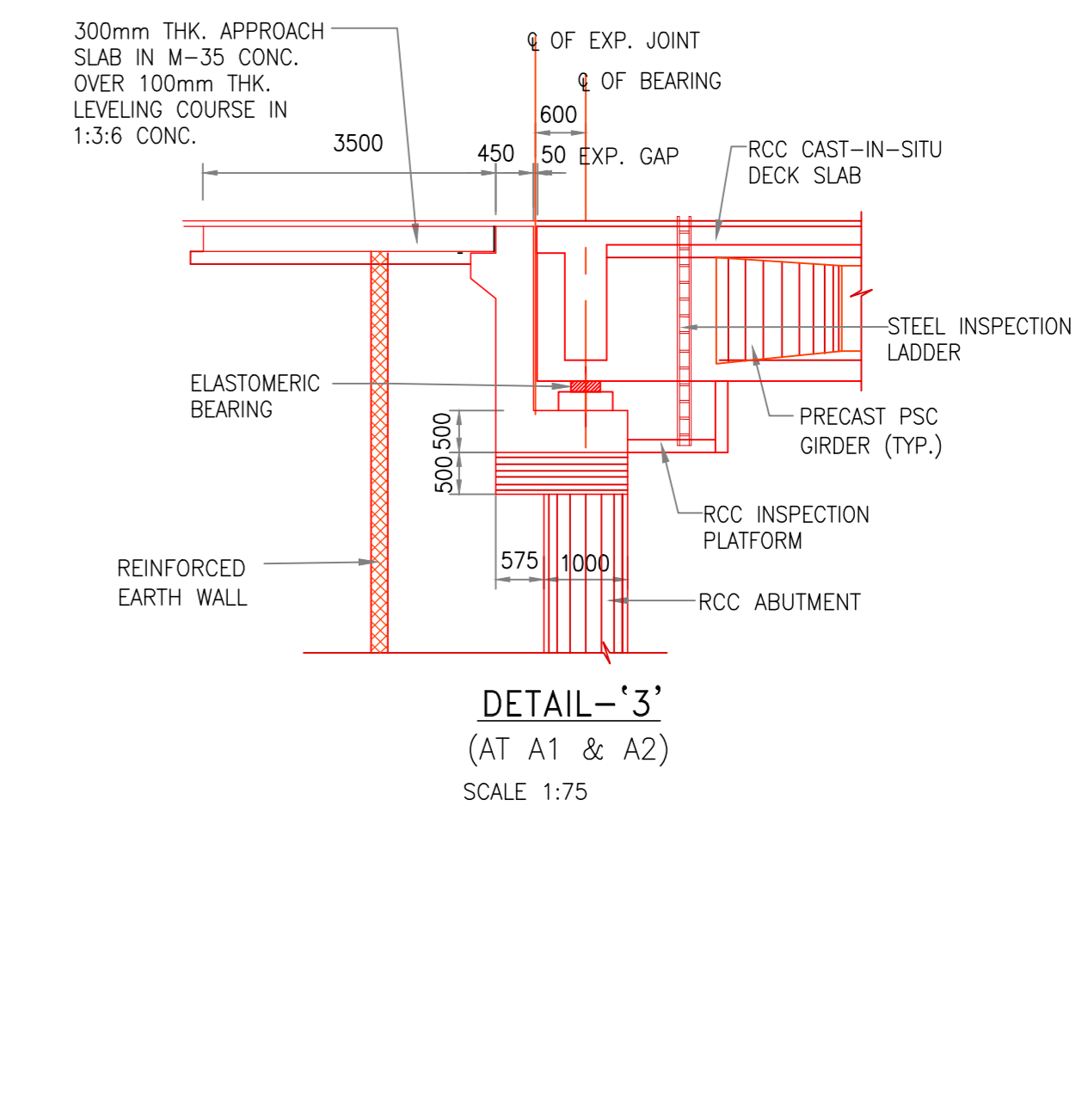
ABUTMENT CAP PLAN A1 & A2
(SCALE 1:75)



TYPICAL PIER CAP PLAN
P1 TO P7 & P10 TO P16
(SCALE 1:75)

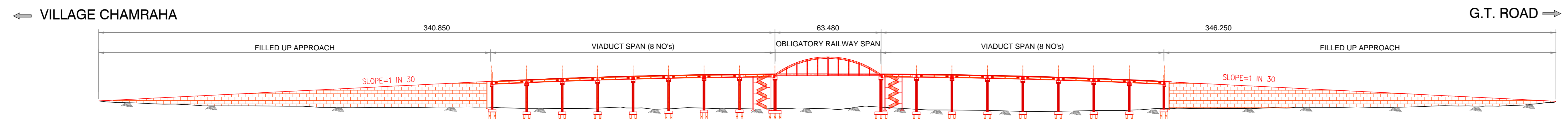


DETAIL-2
P1 TO P7 & P10 TO P16
(SCALE 1:75)



DETAIL-3
(AT A1 & A2)
(SCALE 1:75)

LEGEND	
—	PROPOSED WORK
—	EXISTING WORK
—	FUTURE WORK



LONGITUDINAL ELEVATION INCLUDING FILLED UP PORTION

F.R.L. (m)	GROUND LEVEL (m)	VERTICAL PROFILE	HORIZONTAL PROFILE	CHAINAGE (Km)
99.430	99.430	L=50.000m VALLEY CURVE	STRAIGHT LENGTH = 97.490m	-377.990
99.640	99.386	L=211.450m SLOPE=1 IN 30	CURVE LENGTH= 63.500m CURVE S1 (R=54.500m)	-352.990
100.260	99.160	L=84.900m SUMMIT CURVE	STRAIGHT LENGTH=217.00m	-327.990
104.310	98.145	L=84.900m SUMMIT CURVE	STRAIGHT LENGTH= 181.00m	-201.340
105.010	98.182	L=206.050m SLOPE=1 IN 30	CURVE LENGTH= 81.00m CURVE S2 (R=46.60m)	-180.140
105.720	98.282		STRAIGHT LENGTH= 110.590m	-158.940
106.430	98.278			-137.740
107.130	98.333			-116.540
107.750	98.320			-95.340
108.190	98.262			-74.140
108.460	98.313			-52.940
108.545	98.645			-31.740
108.545	98.420			0.000
108.460	98.380			31.740
108.190	98.322			52.940
107.750	98.361			74.140
107.130	98.435			95.340
106.430	98.384			116.540
105.720	98.282			137.740
105.010	98.369			158.940
104.310	98.360			180.140
				201.340
				322.990
				347.990
				372.990

CE'S DRG NO.:	DRM/MGS/PLAN NO.:	DFCCIL DRG NO.:
DATE:	REV. NO.:	REVISION:
EAST CENTRAL RAILWAY		MGS DIVISION
 DEDICATED FREIGHT CORRIDOR CORPORATION OF INDIA LIMITED (A GOVERNMENT OF INDIA ENTERPRISE)		
PROJECT: PROPOSED ROB IN-LIEU OF LC 48 AT Km. 585/5-7 BETWEEN KUMAHU-SHIVSAGAR STATION IN MUGHALSARAI - GAYA SECTION AND ROAD Km. ON VILLAGE ROAD BETWEEN G.T. ROAD TO CHAMRAHA VILLAGE		
TITLE: GENERAL ARRANGEMENT DRAWING OF ROB AT LC No. 48		
DEALT BY: A.K.GUPTA	DATE: 09.07.18	DRG. NO. PPC/DFCC/ROB/LC 48 GAD/01 (Sheet 2 of 2)
DRAWN BY: AS.RAWAT	SCALE: AS SHOWN	REV. R0
CONSULTANTS: PARK PROJECTS CONSULTANCY PVT.LTD. NEW DELHI		

DESIGNATION	SIGNATURE	DESIGNATION	SIGNATURE
ATUL KUMAR Sr. DE/CE-CPDM/MGS		CE RMD PATNA	
RUPES KUMAR Sr. DOM/MGS		EXECUTIVE ENGINEER (RWD-1 WORK DIVISION SASARAM)	
ALOK KUMAR Sr. DE/CPDM/MGS		SUPERINTENDING ENGINEER (RWD-1 WORK DIVISION SASARAM)	
APMENG/DFCCIL		STATE GOVT. BIHAR	
SSEW/DOS	BRADEN/DOS	DFCCIL/MGS	MGS DIVISION