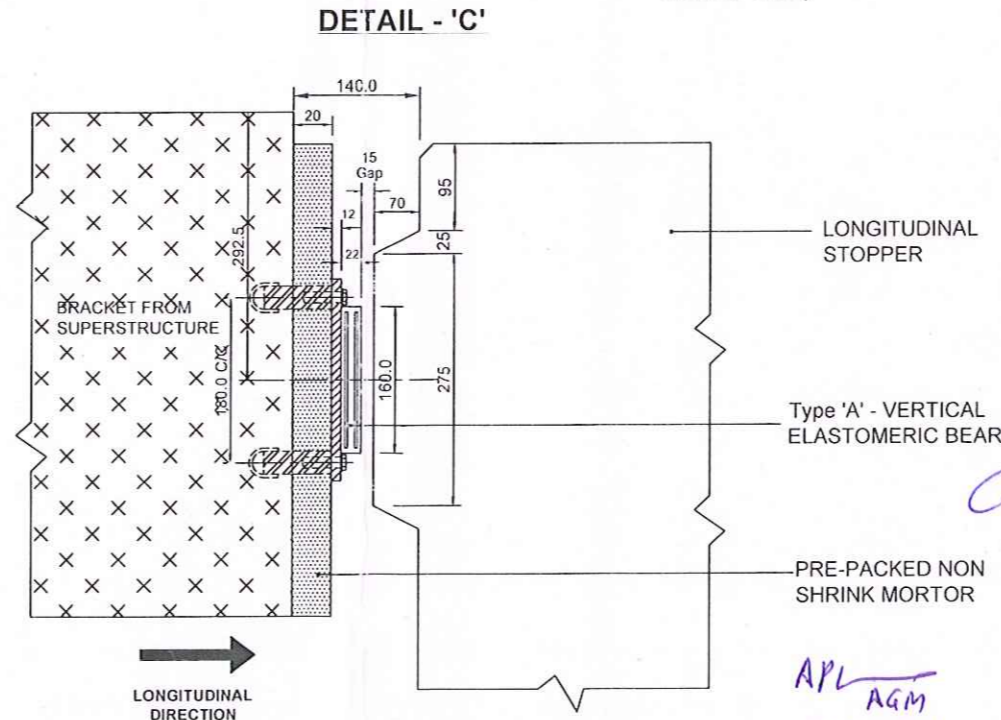
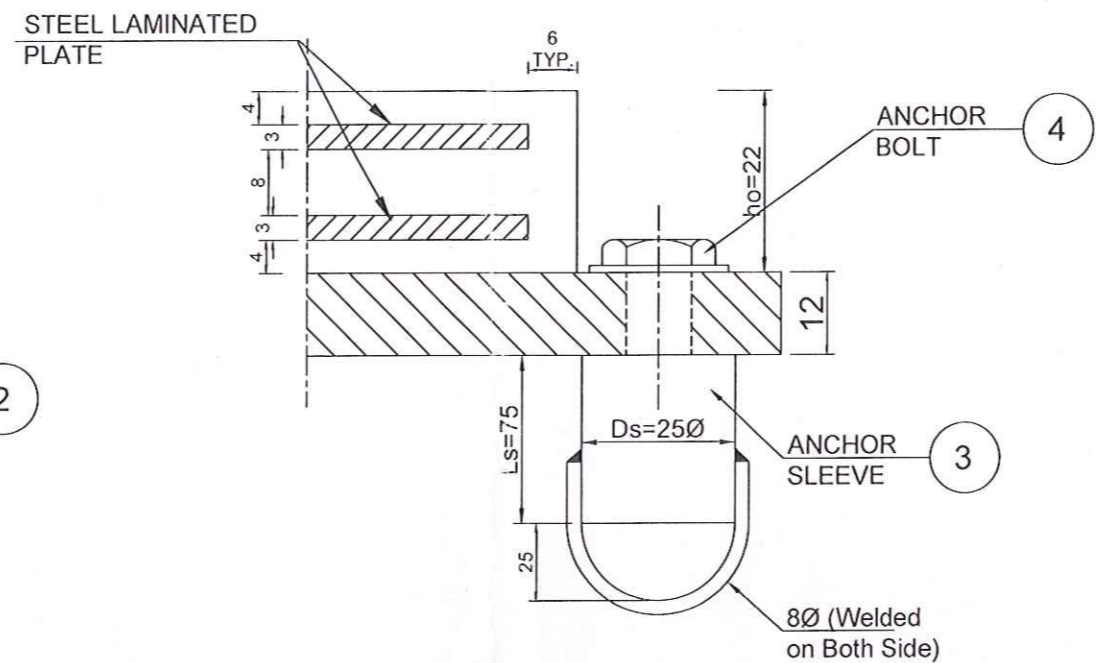
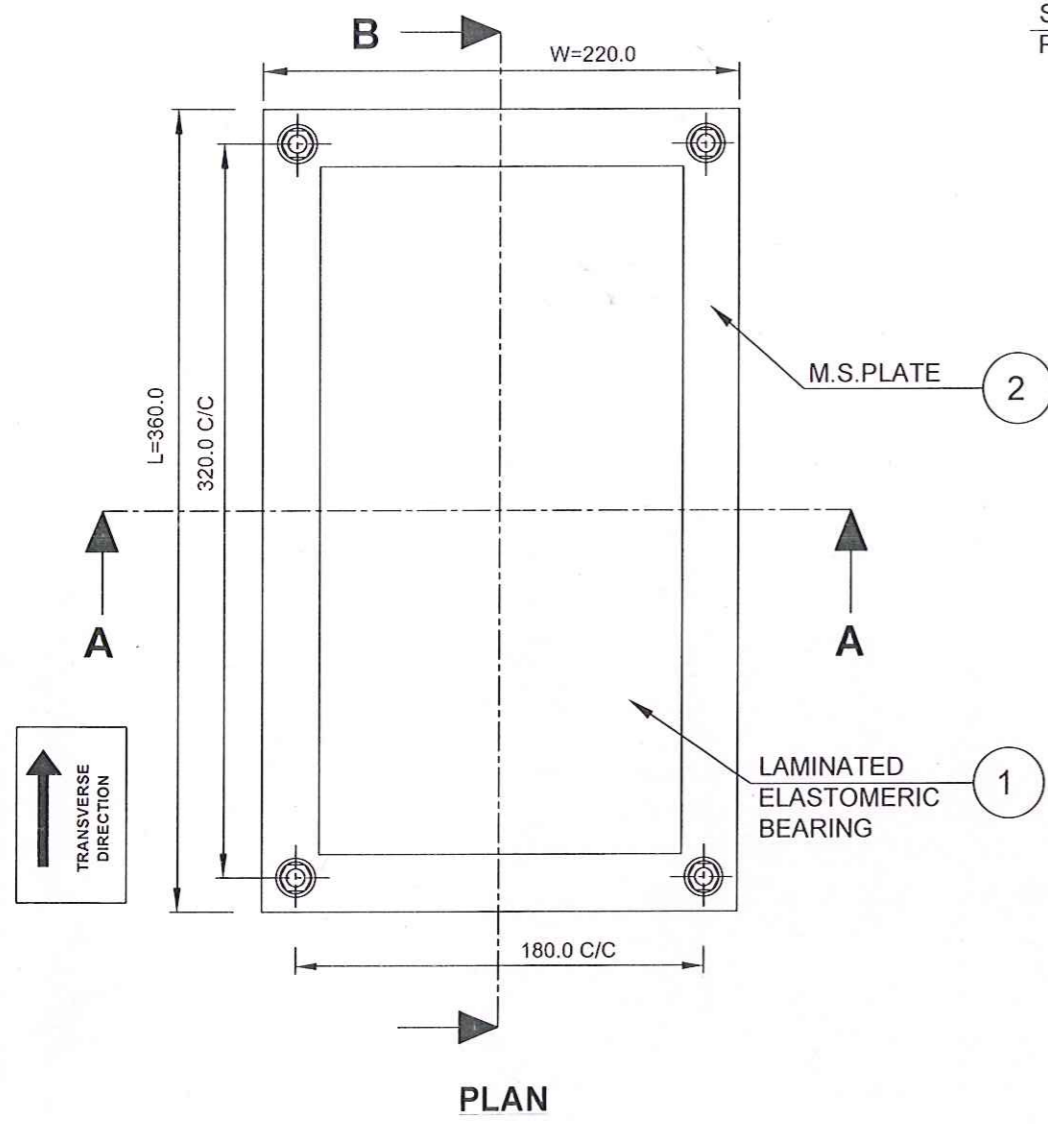


- NOTES:**
1. ALL DIMENSIONS ARE IN MM UNLESS OTHERWISE SPECIFIED.
 2. DO NOT SCALE THE DIMENSIONS. ONLY WRITTEN DIMENSIONS ARE TO BE FOLLOWED.
 3. THE VERTICAL ELASTOMERIC BEARINGS HAS BEEN DESIGNED AS PER IRC : 83 (PART II) -1987.
 4. MATERIAL :
 - 4.1) RAW MATERIAL CHLOROPRENE (CR) WILL BE USED IN MANUFACTURE OF ELASTOMERIC BEARING.
 - 4.2) PROPERTIES OF ELSTOMER WILL BE AS PER CL. 915.1 & 915.2 AS PER IRC : 83 (PART II) - 1987.
 - 4.3) LAMINATES OF MILD STEELS CONFIRMING TO IS : 2062.
 - 4.4) ANCHOR BOLTS MATERIAL AS PER GRADE 4.6 OF IS : 1367 & SLEEVE MATERIAL AS PER IS:2062 & DETAIL OF THREAD AS PER IS : 1367.
 - 4.5) SUITABLE NOS. OF WASHER ARE TO BE USED AS A PACKING TO TIGHTEN THE ANCHOR BOLTS WITH M.S.PLATE.
 5. M.S.PALTE (BACKING PLATE) IS VALCUNISED ALONG WITH THE ELASTOMERIC BEARING AT THE TIME OF MANUFACTURING.
 6. M.S.PLATE (BACKING PLATE) WILL BE COATED ONE COAT OF EPOXY PRIMER.
 7. ANCHOR SLEEVE & BOLTS WILL BE HOT DIP GALVANISED COATED AFTER WELDING BEFORE DISPATCH.
 8. MANUFACTURING TOLERANCES AS PER TABLE 2 CL. 917.7 OF IRC:83(PART II)-1987.
 9. ALL MATERIAL SPECIFICATIONS, FABRICATION, TESTING AND ACCEPTANCE OF BEARING SHALL BE IN ACCORDANCE WITH TENDOR DOCUMENT AND IRC:83 (PART II) -1987 SPECIFICATION.



SHOWING ORIENTATION OF VERTICAL ELASTOMERIC BEARING & LONGITUDINAL STOPPER

CD/103/06
CONTROLLED COPY
 Signature _____
 Date _____
 CRE _____
 CPM _____

NO.	DESCRIPTION	SIZE	MATERIAL	QTY.
4	ANCHOR BOLT	M12 x 40	IS : 1367 (Gr. 4.6)	4
3	ANCHOR SLEEVE (D _s x L _s)	25Ø x 75	MILD STEEL (IS : 2062)	4
2	M.S.PLATE (L x W x t)	360 x 220 x 12	MILD STEEL (IS : 2062)	1
1	ELASTOMERIC BEARING (l _c x b _o x h _o)	300 x 160 x 22	CHLOROPRENE (IRC : 83 (Part II)-1987)	1

(THIS DRAWING IS APPLICABLE FOR FOLLOWING BRIDGES :
 BRIDGE NO. : 92, 93, 125, 163, 166, 169, 182, 192, 203, 239, 263, 264, 284, 287, 288, 352, 358, 359, 368, 400, 401, 405, 411, 417, 419, 422, 428, & 440)

CLIENT	DEDICATED FREIGHT CORRIDOR CORPORATION OF INDIA LTD.
PROJECT	WESTERN FREIGHT CORRIDOR : MAJOR BRIDGES BETWEEN VAITARANA AND UTRAN ON VASAI - BHARUCH SECTION
CONTRACTOR	SOMA ENTERPRISE LTD.
TITLE	DETAIL OF 40 TON VERTICAL ELASTOMERIC BEARING - TYPE 'A' (For LONGITUDINAL STOPPER) (For BOX TYPE SUPERSTRUCTURE)

POLYMER PRODUCTS
 Corporate Office :72, MAHAVIR CENTRE, SECTOR - 17, VASHI, NAVI MUMBAI - 400 705
 Tel : 91-22-27892628 / 27891310
 Fax - 27891186
 Works : H - 32, MIDC, SATPUR, NASIK - 422007

SCALE	DRAWN BY	CHECKED BY	DATE	DRAWING	REVISION
N.T.S	NARESH	N. K. PRABHU	30/09/2011	PP/SOMA_DFCC/ BOX/40 Ton-Type A	R2

THIS DRAWING IS THE PROPERTY OF POLYMER PRODUCTS AND SHOULD NOT BE COPIED / USED WITHOUT PRIOR PERMISSION.



APL AGM
 21-10-2011