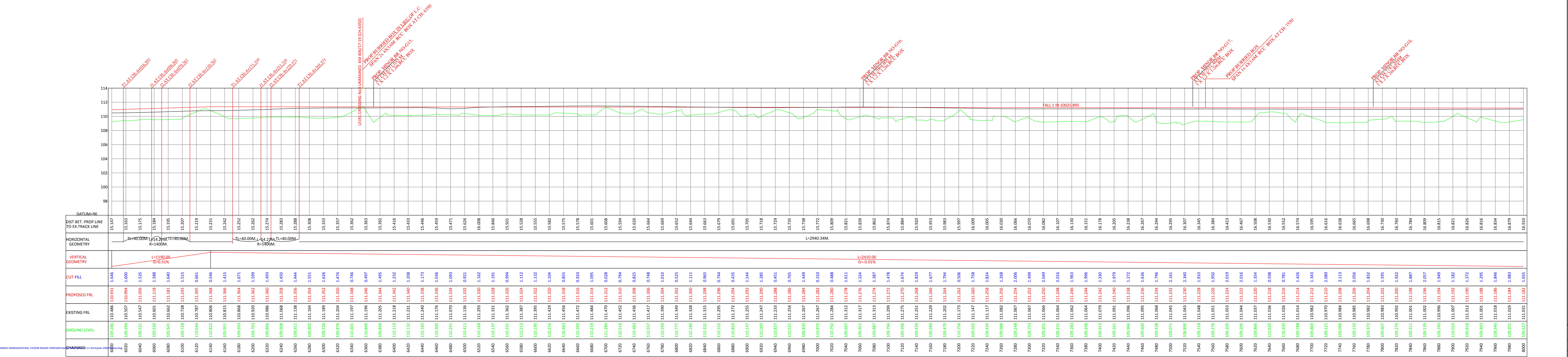


LENGTH= 2580.72M

P L A N



LONGITUDINAL SECTION

- NOTE:
1. DETAILS SHOWN IN THIS DRAWING ARE INDICATIVE.
  2. PROPOSED WORKS ARE SHOWN IN RED.
  3. ALL LEVELS ARE TAKEN WITH REFERENCE TO G.T.S BENCH MARK.
  4. TROLLEY REFUSES WILL BE PROVIDED AT SPECIFIED INTERVALS AS PER IR/DPC STANDARDS.
  5. MINIMUM HEIGHT OF OBSTACLES SHALL BE PROVIDED AS PER RELEVANT PARA OF EMPLOYER'S REQUIREMENTS.

INDICATIVE DRAWING

LEGEND

PROPOSED DFC TO BAGHABHUNPUR LINE	— (Red line)
PROP. DFC LINE TO CHIRALAPATHU	— (Blue line)
EXISTING I.R. LINE	— (Black line)
PROP. LAND WIDTH	- - - (Green dashed line)
INDICATIVE TOE LINE	— (Black line)
ECR STONE	● (Pink circle)
TREE	■ (Green square)
WELL BORE WELL	⊙ (Blue circle)
HAND PUMP	⊙ (Blue circle)
ELECTRIC POLE	⊥ (Black T-shape)
SIGNAL POLE	⊥ (Black T-shape)
KM STONE	⊥ (Black T-shape)
STRUCTURES/HUT	□ (Black outline)
STRUCTURES TO BE DISMANTLED	□ (Red outline)
WIRE FENCE	- - - (Black dashed line)
HIT LINE	⊠ (Black X-shape)
WATER BODIES	■ (Blue square)
CANAL	— (Blue line)
NALA	— (Blue line)
ROAD	— (Black line)

PROJECT		DEDICATED FREIGHT CORRIDOR CORPORATION OF INDIA LTD.	
DETAIL		DESIGN AND CONSTRUCTION OF DFC WORKS SONNAGAR TO NEW SONNAGAR PLAN & SECTION UP & ON LINE FOR KM: 6000 TO 8000 KM	
SCALE	HORI: 1 IN 200	VERT.	1 IN 200
DRG NO.	REVISION	NO.	REVISION