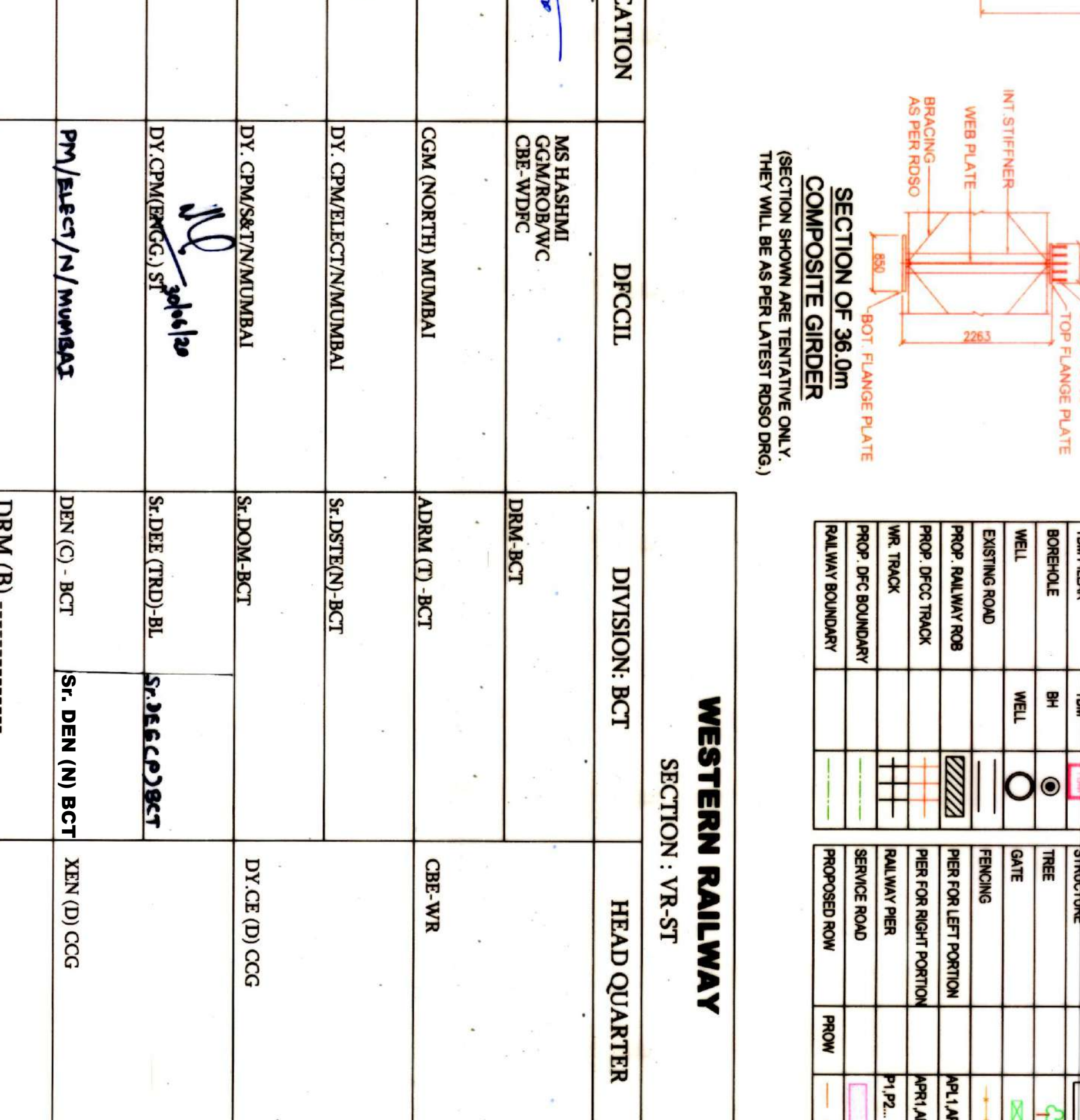
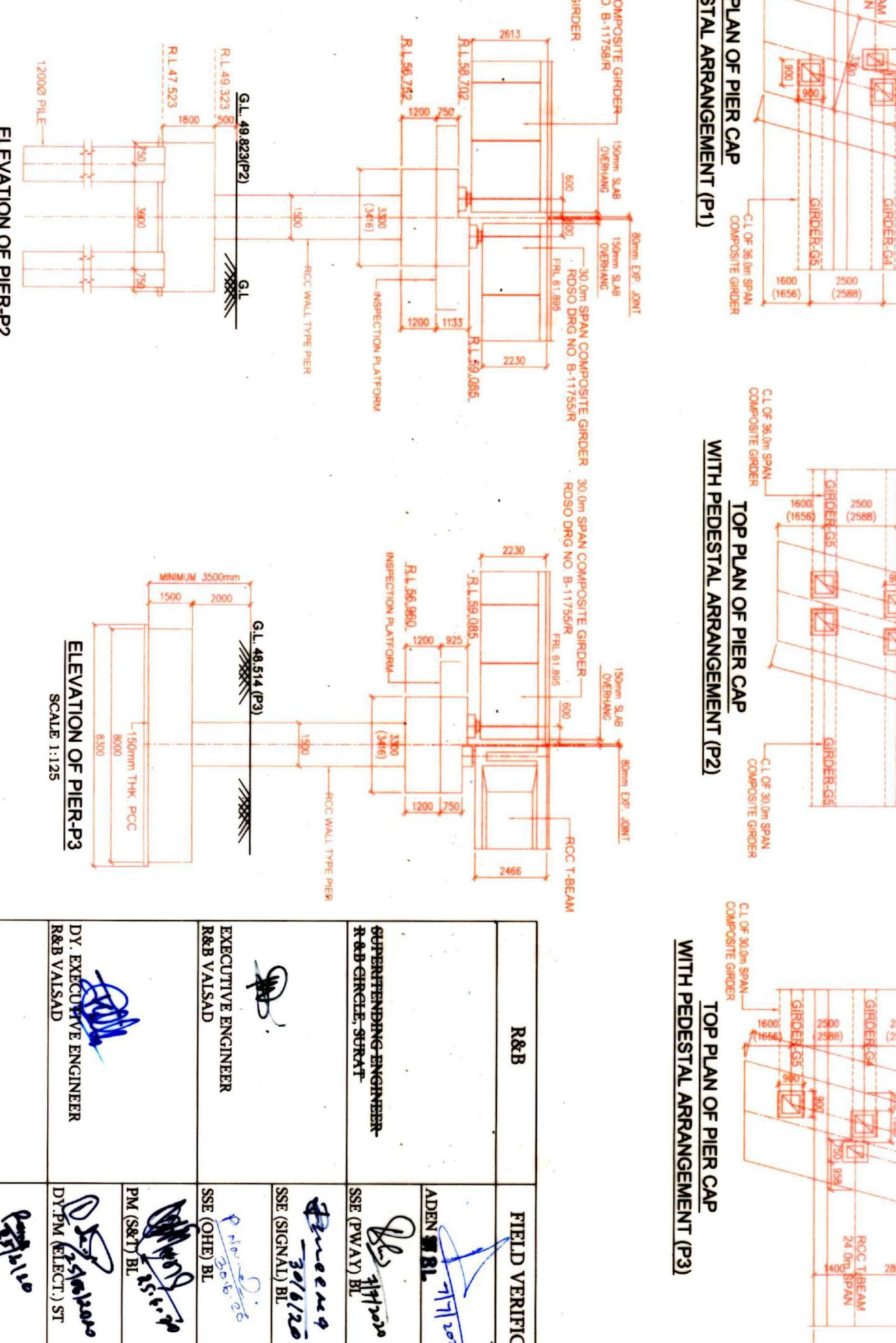
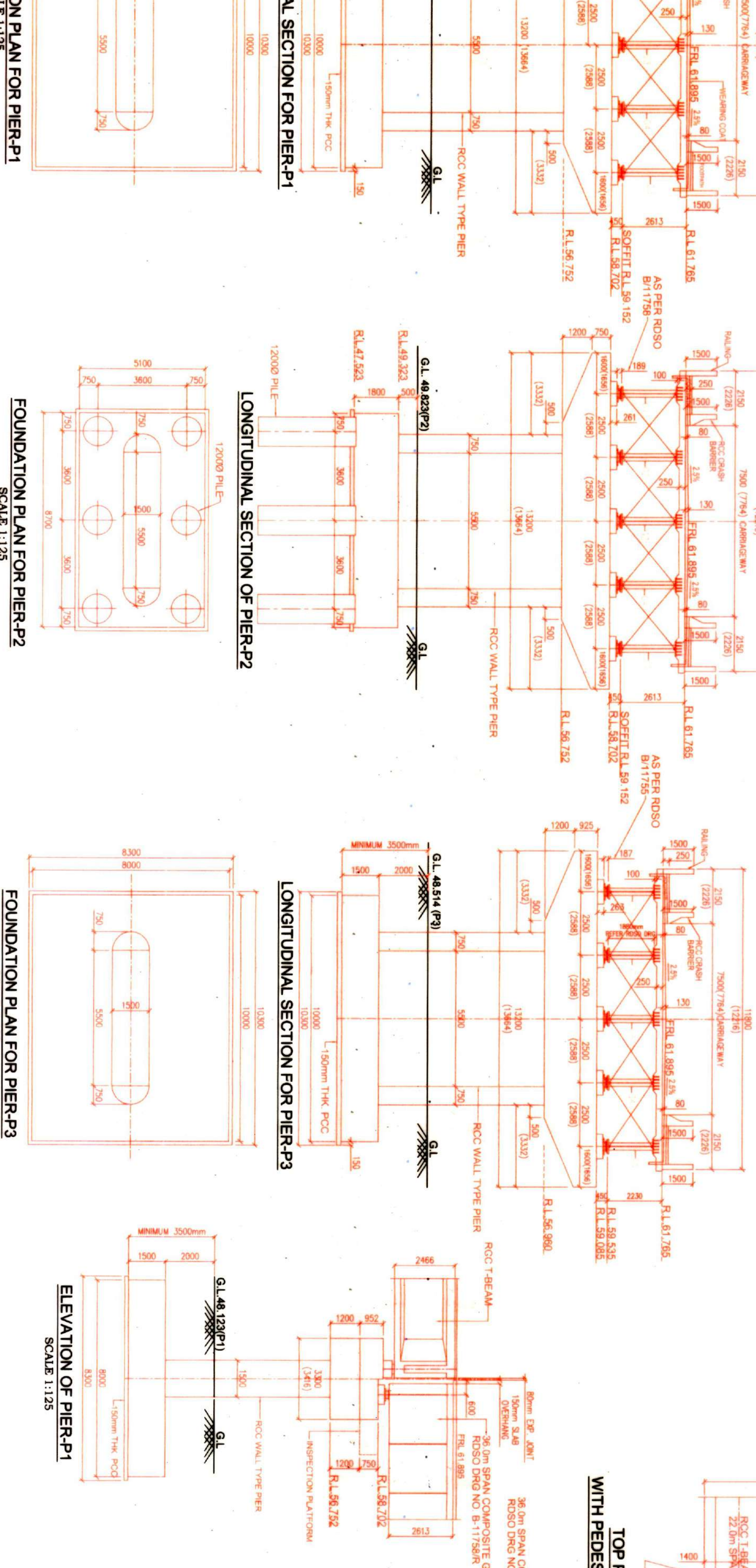
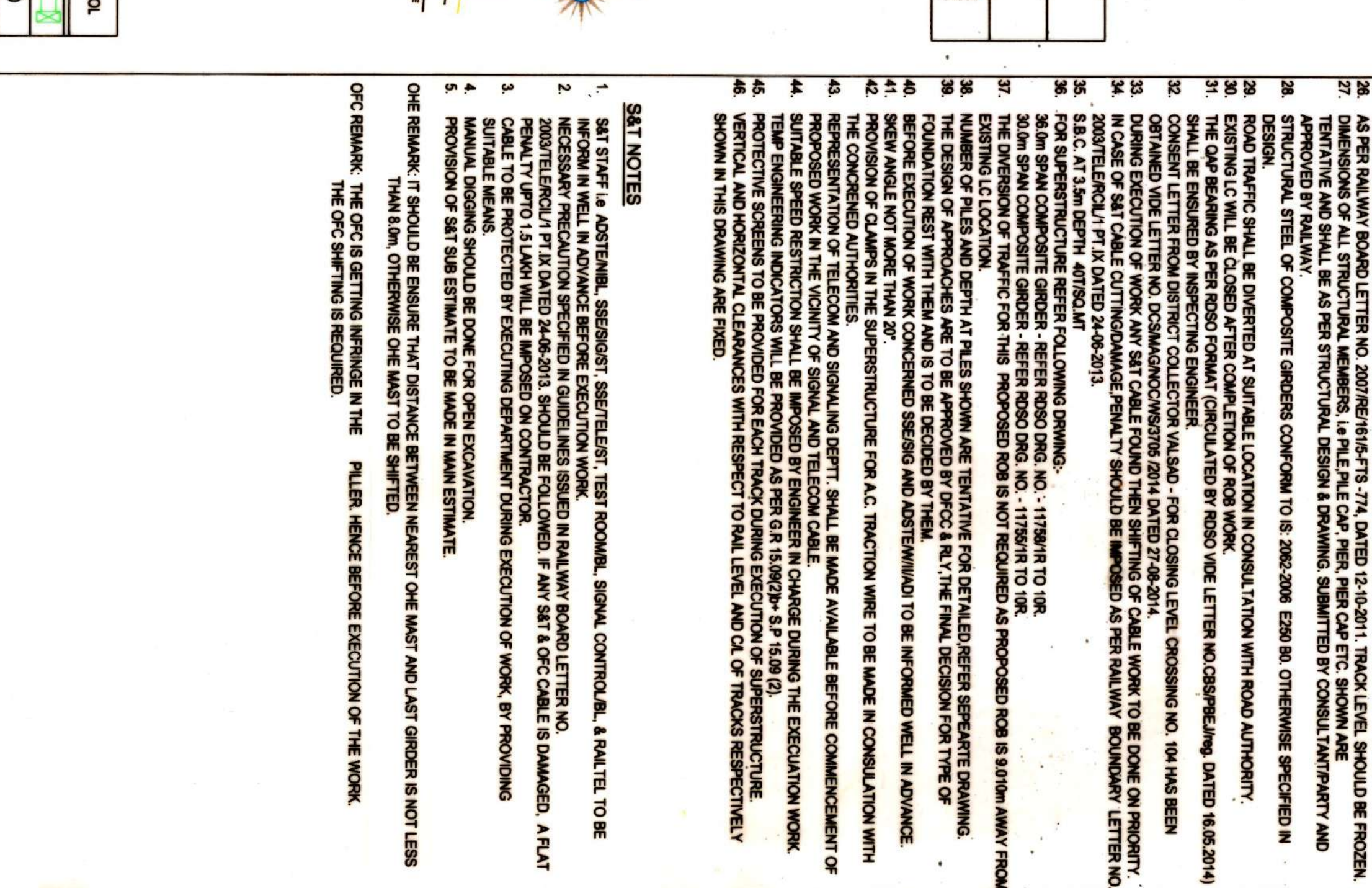
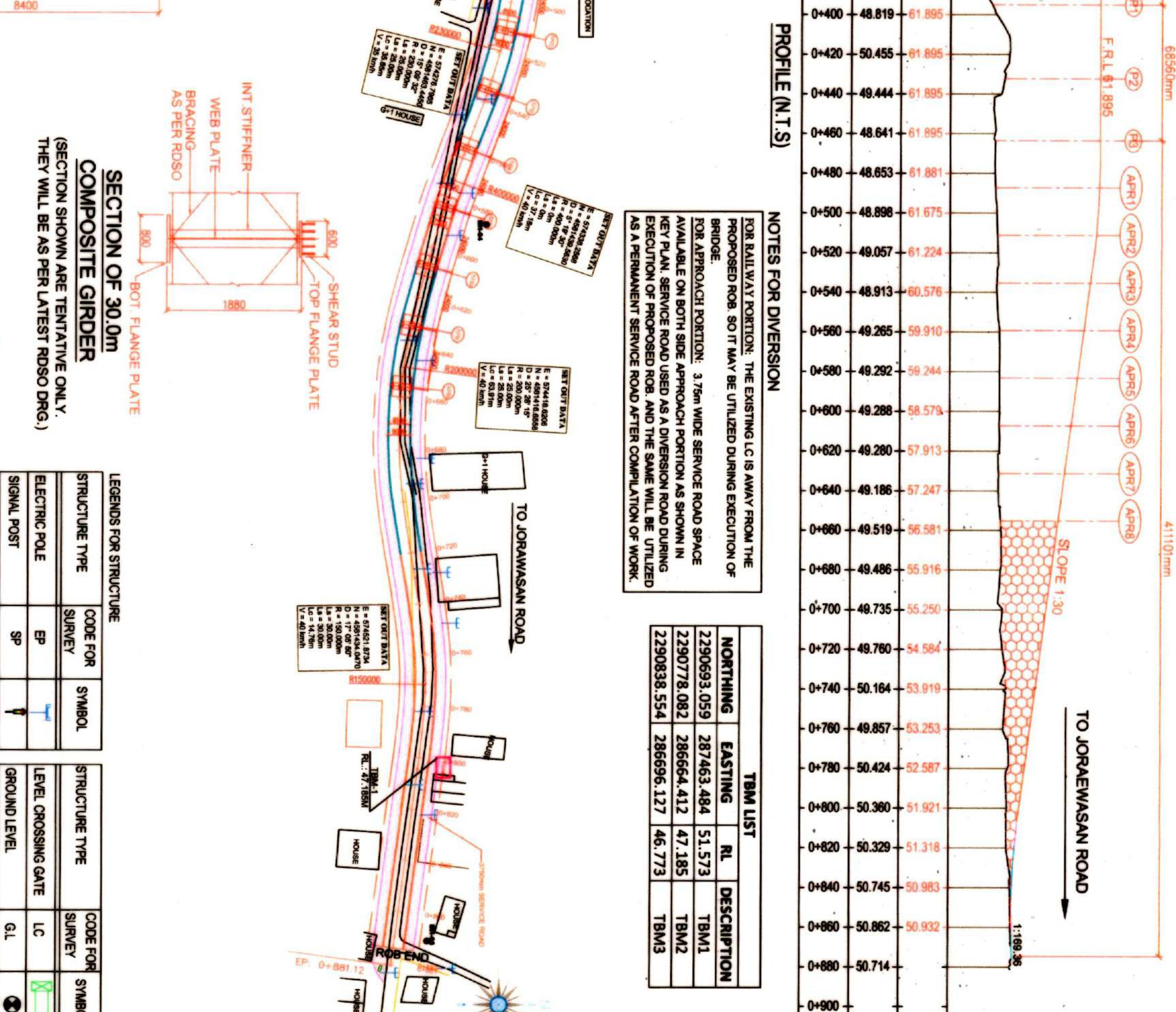
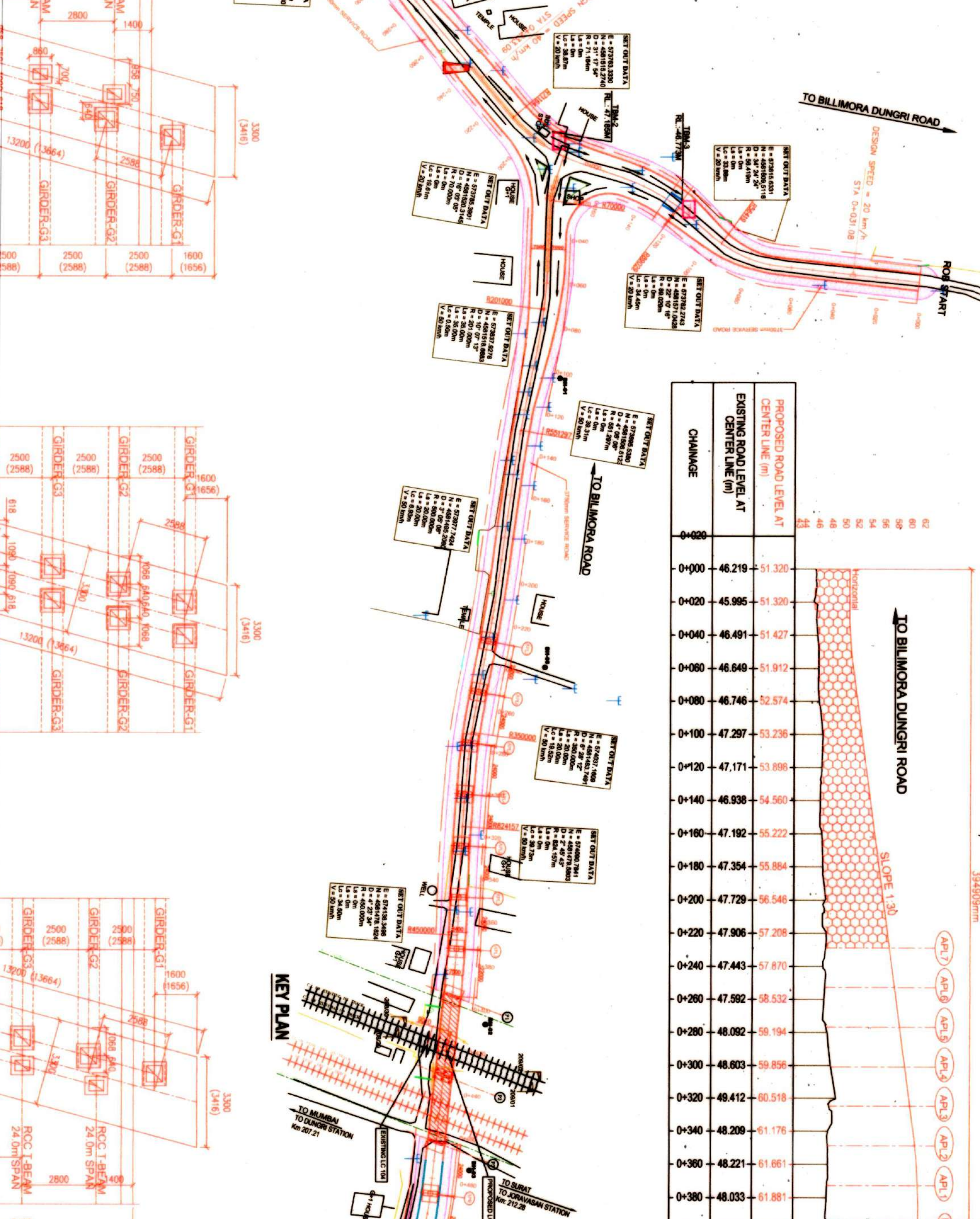
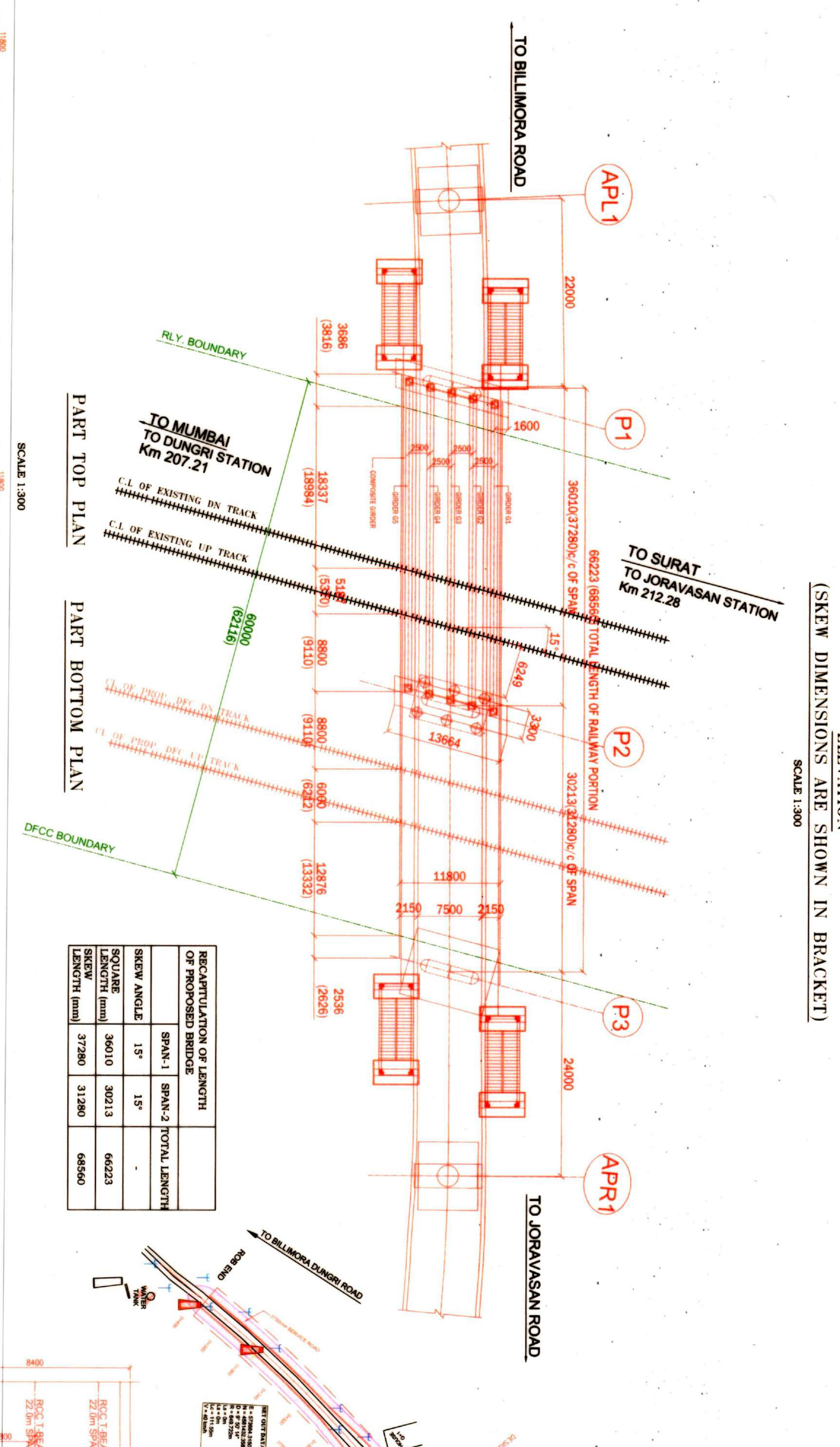


**COST SHARING BASIS - DFCCL & RAILWAY**

NO.	DESCRIPTION	UNIT	QUANTITY	RATE	AMOUNT
1	...	...	...	...	...
2	...	...	...	...	...
3	...	...	...	...	...
4	...	...	...	...	...
5	...	...	...	...	...
6	...	...	...	...	...
7	...	...	...	...	...
8	...	...	...	...	...
9	...	...	...	...	...
10	...	...	...	...	...
11	...	...	...	...	...
12	...	...	...	...	...
13	...	...	...	...	...
14	...	...	...	...	...
15	...	...	...	...	...
16	...	...	...	...	...
17	...	...	...	...	...
18	...	...	...	...	...
19	...	...	...	...	...
20	...	...	...	...	...
21	...	...	...	...	...
22	...	...	...	...	...
23	...	...	...	...	...
24	...	...	...	...	...
25	...	...	...	...	...
26	...	...	...	...	...
27	...	...	...	...	...
28	...	...	...	...	...
29	...	...	...	...	...
30	...	...	...	...	...
31	...	...	...	...	...
32	...	...	...	...	...
33	...	...	...	...	...
34	...	...	...	...	...
35	...	...	...	...	...
36	...	...	...	...	...
37	...	...	...	...	...
38	...	...	...	...	...
39	...	...	...	...	...
40	...	...	...	...	...
41	...	...	...	...	...
42	...	...	...	...	...
43	...	...	...	...	...
44	...	...	...	...	...
45	...	...	...	...	...



<b>RAB</b>	<b>FIELD VERIFICATION</b>	<b>DFCCIL</b>	<b>DIVISION BCT</b>	<b>HEAD QUARTER</b>
EXECUTIVE ENGINEER RAB MUMBAI	ADEN B. J.	MS HASMID CH. WARD	BCT	
EXECUTIVE ENGINEER RAB MUMBAI	SR. ENGINEER S.S. SHANU B.	CO. NORTH MUMBAI	BCT	
EXECUTIVE ENGINEER RAB MUMBAI	SR. ENGINEER S.S. SHANU B.	CO. NORTH MUMBAI	BCT	
EXECUTIVE ENGINEER RAB MUMBAI	SR. ENGINEER S.S. SHANU B.	CO. NORTH MUMBAI	BCT	
EXECUTIVE ENGINEER RAB MUMBAI	SR. ENGINEER S.S. SHANU B.	CO. NORTH MUMBAI	BCT	
EXECUTIVE ENGINEER RAB MUMBAI	SR. ENGINEER S.S. SHANU B.	CO. NORTH MUMBAI	BCT	

**DEDICATED FREIGHT CORRIDOR CORPORATION OF INDIA LIMITED**

**GENERAL ARRANGEMENT DRAWING (RAILWAY PORTION) (2 LANES)**

PROJECT: CONSTRUCTION OF ROB IN LANE OF LG NO. 104 AT R. K. RM 20830-20927 AT WESTERN BLACK STATION - DONGRI - JOYVASMAN - BCT DIVISION OF WESTERN RAILWAY.

PNR BOOK ITEM NO. 279 OF 2019-20

WESTERN RAILWAY

OFFICE OF CHIEF ENGINEER, GENERAL ENGINEERING, WESTERN RAILWAY, CHURCHGATE, MUMBAI 400 020.

CONSULTANT: B.I.O.C. SOUVIA INDUSTRIAL ESTATE, B.I.O.C. SOUVIA INDUSTRIAL ESTATE, 7TH FLOOR, G.D. BUILDING, CHURCHGATE, MUMBAI 400 020.

SCALE: AS SHOWN

REV.	DATE
RO	15-05-2020