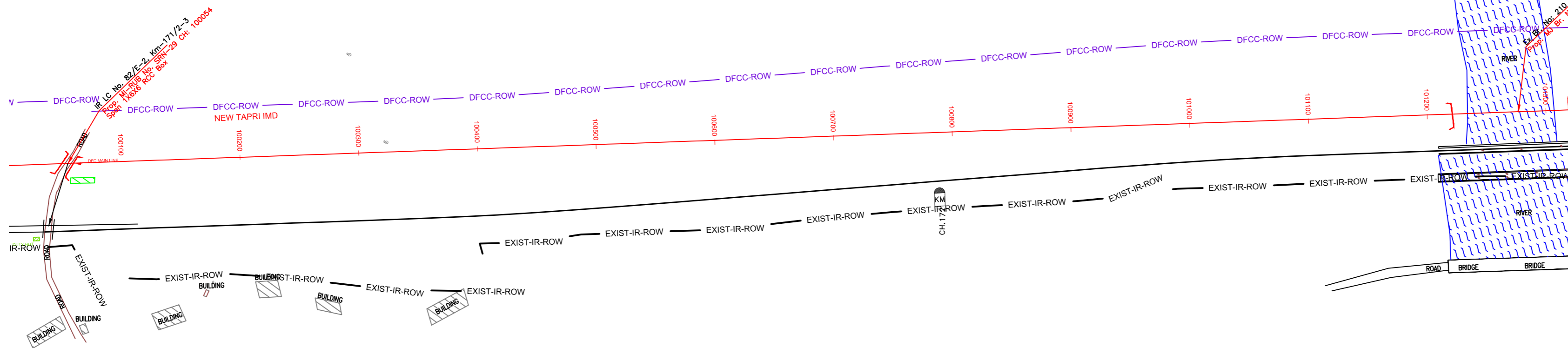


KHURJA

PILKHANI

PROJECT SHEET NO. 177

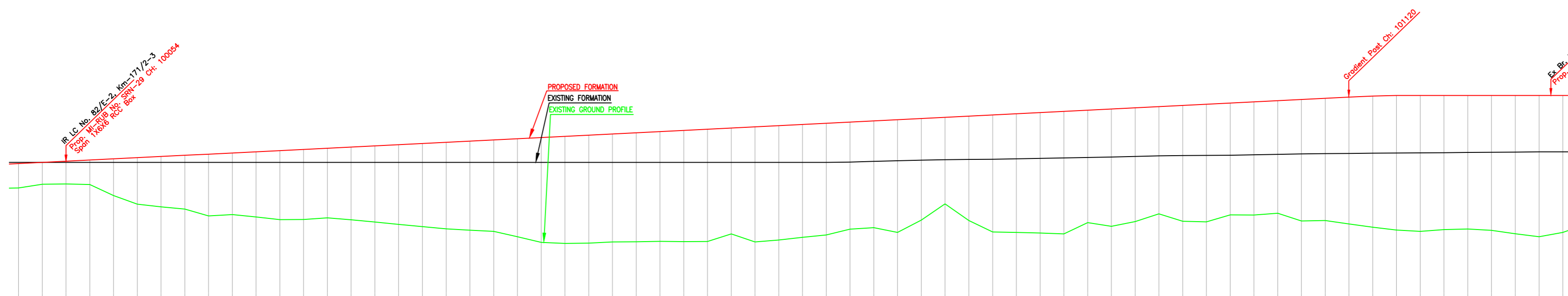


PLAN

NOTE:-
MINIMUM HEIGHT OF EMBANKMENT SHALL
BE PROVIDED AS PER RELEVANT PARA OF
PART 2 OF BID DOCUMENT.

LEGEND

EXIST. IR TRACK	—
PROP. DFCC TRACK	—
EXIST. LAND BOUNDARY	—
DFC LAND BOUNDARY	—
WORKS TO BE DONE BY OTHER CONTRACTOR	—
PROPOSED BRIDGE	—
PROP. STRUCTURE	—
EXIST. STRUCTURE	—
RIVER/NALA	—
WELL	—
TREE/TREE CLUSTER	—
COMPOUND WALL	—
WORK TO BE DISMANTLED	—
HIGH TENSION LINE	—
POND	—
TELEPHONE POLE	—
ELECTRIC LINE	—
OHE TOWER	—
HAND PUMP	—
GPS PILLAR	—
RAILWAY SIGNAL	—
OHE MAST	—
RELIGIOUS STRUCTURE	—
PIPE LINE CORRIDOR	—
ROAD	—



L-SECTION

Gradient	Rise 1 in 200	Rise 1 in 200	Rise 1 in 200	Rise 1 in 1647																																																																																																																																																																																																																																																																																																																																																																																																																																																																																																																																																																																																																																																																																																																																																																																																																																																																																																																																																																																																																																																		
Vertical Alignment	—																																																																																																																																																																																																																																																																																																																																																																																																																																																																																																																																																																																																																																																																																																																																																																																																																																																																																																																																																																																																																																																					
HORIZONTAL ALIGNMENT	—																																																																																																																																																																																																																																																																																																																																																																																																																																																																																																																																																																																																																																																																																																																																																																																																																																																																																																																																																																																																																																																					
Dist. Between Existing Main Track & Proposed Adjacent Track of DFC	57.000	57.002	57.019	56.957	56.930	56.917	56.889	56.898	56.904	56.906	56.924	56.936	56.939	56.957	56.959	56.964	57.000	56.956	56.875	56.755	56.544	56.189	55.844	55.530	52.759	51.852	51.111	50.222	49.302	48.403	47.511	46.821	45.754	44.851	43.974	43.101	42.229	41.358	40.487	39.640	38.787	37.929	37.036	36.110	35.211	34.368	33.565	32.838	32.183	31.618	31.196	30.815	30.475	30.166	29.889	29.637	29.407	29.198	29.012	28.848	28.705	28.582	28.480	28.398	28.335	28.289	28.258	28.238	28.226	28.222	28.225	28.232	28.244	28.260	28.279	28.300	28.323	28.349	28.377	28.406	28.436	28.467	28.499	28.532	28.566	28.601	28.636	28.672	28.708	28.745	28.782	28.820	28.858	28.896	28.934	28.972	29.010	29.048	29.086	29.124	29.162	29.200	29.238	29.276	29.314	29.352	29.390	29.428	29.466	29.504	29.542	29.580	29.618	29.656	29.694	29.732	29.770	29.808	29.846	29.884	29.922	29.960	29.998	30.036	30.074	30.112	30.150	30.188	30.226	30.264	30.302	30.340	30.378	30.416	30.454	30.492	30.530	30.568	30.606	30.644	30.682	30.720	30.758	30.796	30.834	30.872	30.910	30.948	30.986	31.024	31.062	31.100	31.138	31.176	31.214	31.252	31.290	31.328	31.366	31.404	31.442	31.480	31.518	31.556	31.594	31.632	31.670	31.708	31.746	31.784	31.822	31.860	31.898	31.936	31.974	32.012	32.050	32.088	32.126	32.164	32.202	32.240	32.278	32.316	32.354	32.392	32.430	32.468	32.506	32.544	32.582	32.620	32.658	32.696	32.734	32.772	32.810	32.848	32.886	32.924	32.962	33.000	33.038	33.076	33.114	33.152	33.190	33.228	33.266	33.304	33.342	33.380	33.418	33.456	33.494	33.532	33.570	33.608	33.646	33.684	33.722	33.760	33.798	33.836	33.874	33.912	33.950	33.988	34.026	34.064	34.102	34.140	34.178	34.216	34.254	34.292	34.330	34.368	34.406	34.444	34.482	34.520	34.558	34.596	34.634	34.672	34.710	34.748	34.786	34.824	34.862	34.900	34.938	34.976	35.014	35.052	35.090	35.128	35.166	35.204	35.242	35.280	35.318	35.356	35.394	35.432	35.470	35.508	35.546	35.584	35.622	35.660	35.698	35.736	35.774	35.812	35.850	35.888	35.926	35.964	36.002	36.040	36.078	36.116	36.154	36.192	36.230	36.268	36.306	36.344	36.382	36.420	36.458	36.496	36.534	36.572	36.610	36.648	36.686	36.724	36.762	36.800	36.838	36.876	36.914	36.952	36.990	37.028	37.066	37.104	37.142	37.180	37.218	37.256	37.294	37.332	37.370	37.408	37.446	37.484	37.522	37.560	37.598	37.636	37.674	37.712	37.750	37.788	37.826	37.864	37.902	37.940	37.978	38.016	38.054	38.092	38.130	38.168	38.206	38.244	38.282	38.320	38.358	38.396	38.434	38.472	38.510	38.548	38.586	38.624	38.662	38.700	38.738	38.776	38.814	38.852	38.890	38.928	38.966	39.004	39.042	39.080	39.118	39.156	39.194	39.232	39.270	39.308	39.346	39.384	39.422	39.460	39.498	39.536	39.574	39.612	39.650	39.688	39.726	39.764	39.802	39.840	39.878	39.916	39.954	39.992	40.030	40.068	40.106	40.144	40.182	40.220	40.258	40.296	40.334	40.372	40.410	40.448	40.486	40.524	40.562	40.600	40.638	40.676	40.714	40.752	40.790	40.828	40.866	40.904	40.942	40.980	41.018	41.056	41.094	41.132	41.170	41.208	41.246	41.284	41.322	41.360	41.398	41.436	41.474	41.512	41.550	41.588	41.626	41.664	41.702	41.740	41.778	41.816	41.854	41.892	41.930	41.968	42.006	42.044	42.082	42.120	42.158	42.196	42.234	42.272	42.310	42.348	42.386	42.424	42.462	42.500	42.538	42.576	42.614	42.652	42.690	42.728	42.766	42.804	42.842	42.880	42.918	42.956	42.994	43.032	43.070	43.108	43.146	43.184	43.222	43.260	43.298	43.336	43.374	43.412	43.450	43.488	43.526	43.564	43.602	43.640	43.678	43.716	43.754	43.792	43.830	43.868	43.906	43.944	43.982	44.020	44.058	44.096	44.134	44.172	44.210	44.248	44.286	44.324	44.362	44.400	44.438	44.476	44.514	44.552	44.590	44.628	44.666	44.704	44.742	44.780	44.818	44.856	44.894	44.932	44.970	45.008	45.046	45.084	45.122	45.160	45.198	45.236	45.274	45.312	45.350	45.388	45.426	45.464	45.502	45.540	45.578	45.616	45.654	45.692	45.730	45.768	45.806	45.844	45.882	45.920	45.958	45.996	46.034	46.072	46.110	46.148	46.186	46.224	46.262	46.300	46.338	46.376	46.414	46.452	46.490	46.528	46.566	46.604	46.642	46.680	46.718	46.756	46.794	46.832	46.870	46.908	46.946	46.984	47.022	47.060	47.098	47.136	47.174	47.212	47.250	47.288	47.326	47.364	47.402	47.440	47.478	47.516	47.554	47.592	47.630	47.668	47.706	47.744	47.782	47.820	47.858	47.896	47.934	47.972	48.010	48.048	48.086	48.124	48.162	48.200	48.238	48.276	48.314	48.352	48.390	48.428	48.466	48.504	48.542	48.580	48.618	48.656	48.694	48.732	48.770	48.808	48.846	48.884	48.922	48.960	48.998	49.036	49.074	49.112	49.150	49.188	49.226	49.264	49.302	49.340	49.378	49.416	49.454	49.492	49.530	49.568	49.606	49.644	49.682	49.720	49.758	49.796	49.834	49.872	49.910	49.948	49.986	50.024	50.062	50.100	50.138	50.176	50.214	50.252	50.290	50.328	50.366	50.404	50.442	50.480	50.518	50.556	50.594	50.632	50.670	50.708	50.746	50.784	50.822	50.860	50.898	50.936	50.974	51.012	51.050	51.088	51.126	51.164	51.202	51.240	51.278	51.316	51.354	51.392	51.430	51.468	51.506	51.544	51.582	51.620	51.658	51.696	51.734	51.772	51.810	51.848	51.886	51.924	51.962	52.000	52.038	52.076	52.114	52.152	52.190	52.228	52.266	52.304	52.342	52.380	52.418	52.456	52.494	52.532	52.570	52.608	52.646	52.684	52.722	52.760	52.798	52.836	52.874	52.912	52.950	52.988	53.026	53.064	53.102	53.140	53.178	53.216	53.254	53.292	53.330	53.368	53.406	53.444	53.482	53.520	53.558	53.596	53.634	53.672	53.710	53.748	53.786	53.824	53.862	53.900	53.938	53.976	54.014	54.052	54.090	54.128	54.166	54.204	54.242	54.280	54.318	54.356	54.394	54.432	54.470	54.508	54.546	54.584	54.622	54.660	54.698	54.736	54.774	54.812	54.850	54.888	54.926	54.964	55.002	55.040	55.078	55.116	55.154	55.192	55.230	55.268	55.306	55.344	55.382	55.420	55.458	55.496	55.534	55.572	55.610	55.648	55.686	55.724	55.762	55.800	55.838	55.876	55.914	55.952	55.990	56.028	56.066	56.104	56.142	56.180	56.218	56.256	56.294	56.332	56.370	56.408	56.446	56.484	56.522	56.560	56.598	56.636	56.674	56.712	56.750	56.788	56.826	56.864	56.902	56.940	56.978	57.016	57.054	57.092	57.130	57.168	57.206	57.244	57.282	57.320	57.358	57.396	57.434	57.472	57.510	57.548	57.586	57.624	57.662	57.700	57.738	57.776	57.814	57.852	57.890	57.928	57.966	58.004	58.042	58.080	58.118	58.156	58.194	58.232	58.270	58.308	58.346	58.384	58.422	58.460	58.498	58.536	58.574	58.612	58.650	58.688	58.726	58.764	58.802	58.840	58.878	58.916	58.954	58.992	59.030	59.068	59.106	59.144	59.182	59.220	59.258	59.296	59.334	59.372	59.410	59.448	59.486	59.524	59.562	59.600	59.638	59.676	59.714	59.752	59.790	59.828	59.866	59.904	59.942	59.980	60.018	60.056	60.094	60.132	60.170	60.208	60.246	60.284	60.322	60.360	60.398	60.436	60.474	60.512	60.550	60.588	60.626	60.664	60.702	60.740	60.778	60.816	60.854	60.892	60.930	60.968	61.006	61.044	61.082	61.120	61.158	61.196	61.234	61.272	61.310	61.348	61.386	61.424	61.462	61.500	61.538	61.576	61.614	61.652	61.690	61.728	61.766	61.804	61.842	61.880	61.918	61.956	61.994	62.032	62.070	62.108	62.146	62.184	62.222	62.260	62.298	62.336	62.374	62.412	62.450	62.488	62.526	62.564	62.602	62.640	62.678	62.716	62.754	62.792	62.830	62.868	62.906	62.944	62.982	63.020	63.058	63.096	63.134	63.172	63.210	63.248	63.286	63.324	63.362	63.400	63.438	63.476	63.514	63.552	63.590	63.628	63.666	63.704	63.742	63.780	63.818	63.856

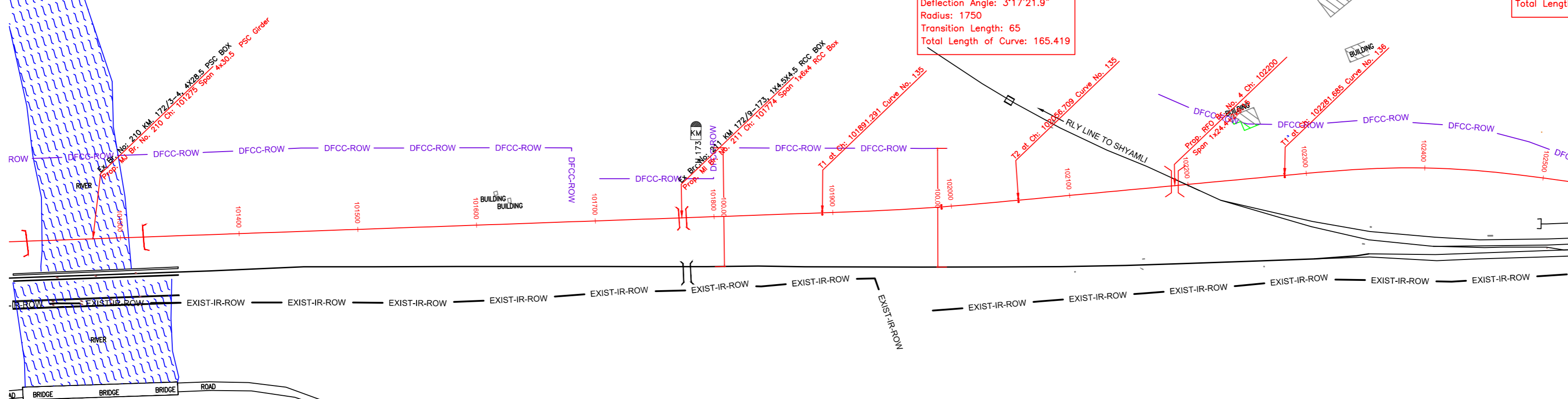
KHURJA

PILKHANI

PROJECT SHEET NO. 178

Curve No. 135
Deflection A
Radius: 70C
Transition L
Total Length

Curve No. 135
Deflection Angle: 3°17'21.9"
Radius: 1750
Transition Length: 65
Total Length of Curve: 165.419

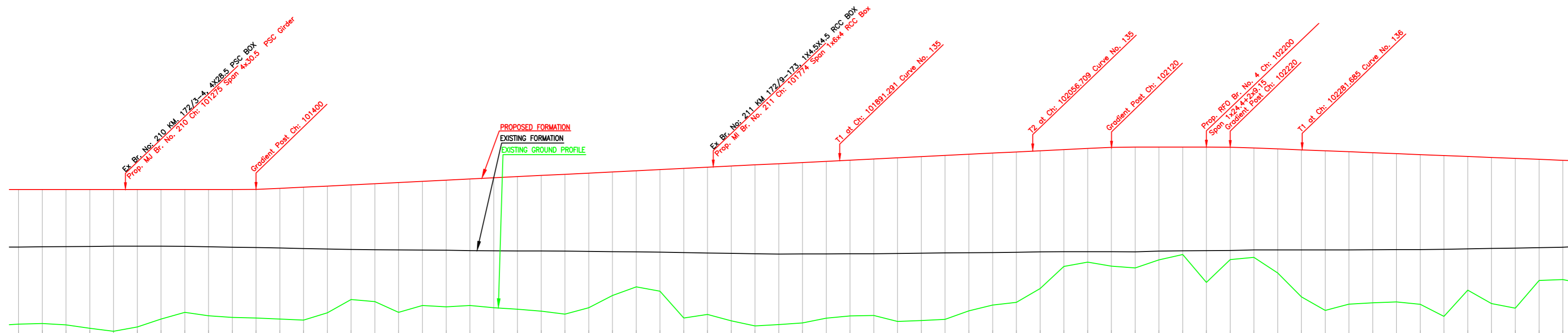


PLAN

NOTE:-
MINIMUM HEIGHT OF EMBANKMENT SHALL
BE PROVIDED AS PER RELEVANT PARA OF
PART 2 OF BID DOCUMENT.

LEGEND

EXIST. IR TRACK	
PROP. DFCC TRACK	
EXIST. LAND BOUNDARY	
DFC LAND BOUNDARY	
WORKS TO BE DONE BY OTHER CONTRACTOR	
PROPOSED BRIDGE	
PROP. STRUCTURE	
EXIST. STRUCTURE	
RIVER/NALA	
WELL	
TREE/TREE CLUSTER	
COMPOUND WALL	
WORK TO BE DISMANTLED	
HIGH TENSION LINE	
POND	
TELEPHONE POLE	
ELECTRIC LINE	
OHE TOWER	
HAND PUMP	
GPS PILLAR	
RAILWAY SIGNAL	
OHE MAST	
RELIGIOUS STRUCTURE	
PIPE LINE CORRIDOR	
ROAD	



L-SECTION

Gradient	Rise 1 in 1647	Rise 1 in 205	Level
Vertical Alignment			
HORIZONTAL ALIGNMENT			
Dist. Between Existing Main Track & Proposed Adjacent Track of DFC	30.555	30.566	30.576
Cut(-)/Fill(m)	11.203	11.171	11.298
Proposed F.L. (m)	276.138	276.150	276.162
EXISTING F.L. (m)	276.141	276.148	276.155
Ground Level (m)	276.147	276.154	276.161
KM	101200	101220	101240

INDICATIVE DRAWING

DEDICATED FREIGHT CORRIDOR CORPORATION OF INDIA LTD.
(A GOVERNMENT OF INDIA ENTERPRISE)

EASTERN CORRIDOR

PROJECT
KHURJA TO PILKHANI
From Km 1367 (ALJN-GZB) to Km 187.5 (SRE-UMB)

CONTRACT PACKAGE - 303

TITLE
PLAN AND PROFILE (Ch: 101300 to Ch: 102500)

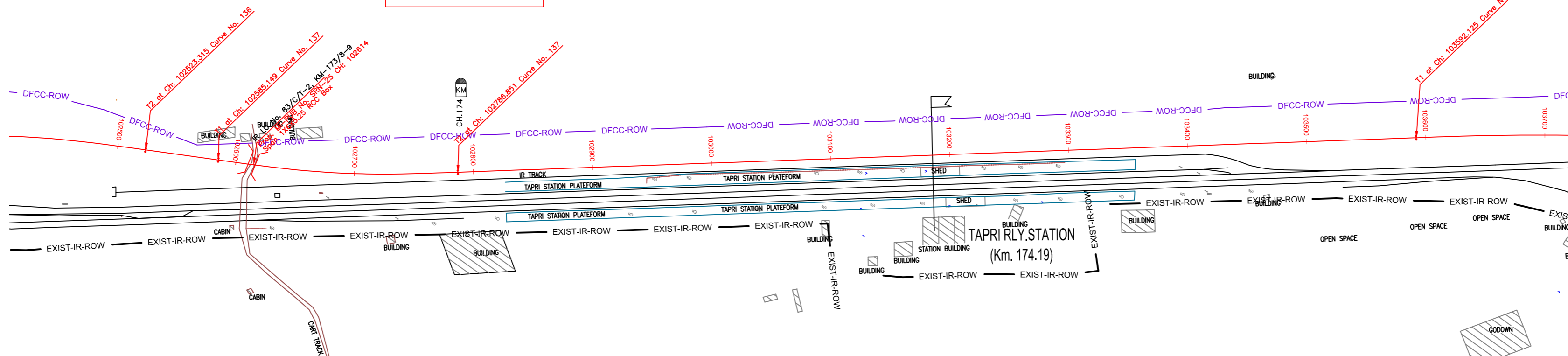
SCALE
DRAWING NO.

SURVEY BY
GENERAL CONSULTANT
AECOM
AECOM Asia Co. Ltd.
5th Floor, Unitary Tower C, DLF Cyber City
DLF Phase II Gurgaon 122002, India

Curve No. 136
 Deflection Angle: 13°14'10.8"
 Radius: 700
 Transition Length: 80
 Total Length of Curve: 241.63

Curve No. 137
 Deflection Angle: 9°57'59.1"
 Radius: 700
 Transition Length: 80
 Total Length of Curve: 201.701

Curve No. 138
 Deflection Angle: 9°57'59.1"
 Radius: 700
 Transition Length: 80
 Total Length of Curve: 201.701

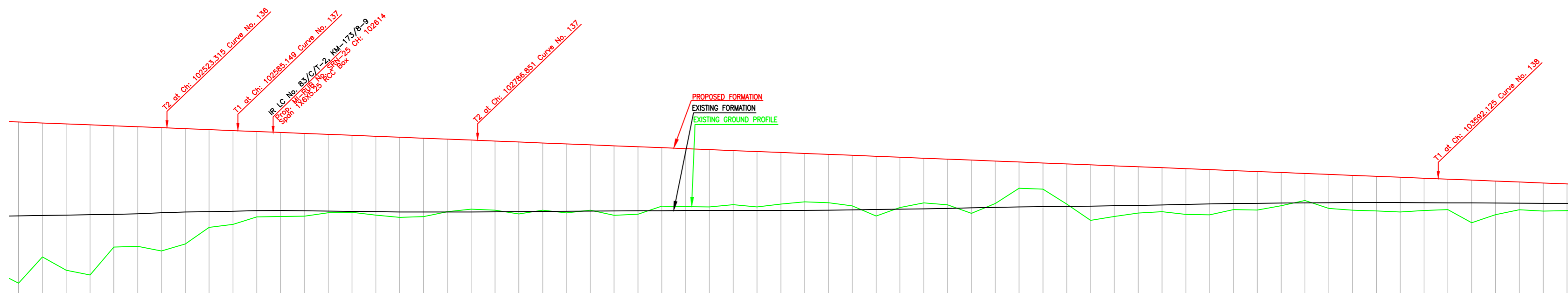


PLAN

NOTE:-
 MINIMUM HEIGHT OF EMBANKMENT SHALL
 BE PROVIDED AS PER RELEVANT PARA OF
 PART 2 OF BID DOCUMENT.

LEGEND

EXIST. IR TRACK	---
PROP. DFCC TRACK	---
EXIST. LAND BOUNDARY	---
DFC LAND BOUNDARY	---
WORKS TO BE DONE BY OTHER CONTRACTOR	---
PROPOSED BRIDGE	---
PROP. STRUCTURE	---
EXIST. STRUCTURE	---
RIVER/NALA	---
WELL	---
TREE/TREE CLUSTER	---
COMPOUND WALL	---
WORK TO BE DISMANTLED	---
HIGH TENSION LINE	---
POND	---
TELEPHONE POLE	---
ELECTRIC LINE	---
OHE TOWER	---
HAND PUMP	---
GPS PILLAR	---
RAILWAY SIGNAL	---
OHE MAST	---
RELIGIOUS STRUCTURE	---
PIPE LINE CORRIDOR	---
ROAD	---



L-SECTION

Gradient	Fall 1 in 253		Fall 1 in 253		Fall 1 in 253	
Vertical Alignment						
HORIZONTAL ALIGNMENT						
Dist. Between Existing Main Track & Proposed Adjacent Track of DFC	102400	285.576	271.225	72.889		
Cut(-)/Fill(m)	102420	287.782	271.280	72.227		
Proposed F.L. (m)	102440	286.659	271.280	78.907	12.248	70.429
EXISTING F.L. (m)	102460	286.264	271.321	278.829	12.564	68.103
Ground Level (m)	102480	286.605	271.351	278.749	10.144	65.311
KM	102500	286.670	271.398	278.670	10.000	62.136
	102520	286.276	271.481	278.590	10.314	59.179
	102540	286.861	271.546	278.511	9.650	57.916
	102560	270.257	271.575	278.432	8.175	52.272
	102580	270.510	271.616	278.353	7.843	43.375
	102600	271.139	271.655	278.274	7.135	40.105
	102620	271.173	271.673	278.195	7.022	36.638
	102640	271.197	271.652	278.115	6.918	33.489
	102660	271.485	271.628	278.038	6.551	30.489
	102680	271.518	271.602	277.957	6.439	28.177
	102700	271.282	271.578	277.878	6.596	27.000
	102720	271.096	271.553	277.799	6.704	27.000
	102740	271.157	271.547	277.720	6.583	27.000
	102760	271.572	271.551	277.640	6.088	27.000
	102780	271.792	271.553	277.561	5.789	27.000
	102800	271.696	271.563	277.482	5.787	27.000
	102820	271.382	271.579	277.403	6.021	27.000
	102840	271.703	271.595	277.324	5.621	27.000
	102860	271.478	271.608	277.245	5.789	27.000
	102880	271.696	271.620	277.165	5.469	27.000
	102900	271.275	271.633	277.086	5.813	27.000
	102920	271.357	271.646	277.007	5.650	27.000
	102940	272.044	271.652	276.928	4.887	27.000
	102960	272.000	271.667	276.848	4.849	27.000
	102980	271.973	271.674	276.770	4.797	27.000
	103000	272.161	271.673	276.690	4.529	27.000
	103020	271.977	271.688	276.611	4.634	27.000
	103040	272.217	271.671	276.532	4.315	27.000
	103060	272.405	271.681	276.453	4.046	27.000
	103080	272.321	271.694	276.374	4.053	27.000
	103100	272.096	271.723	276.295	4.238	27.000
	103120	271.213	271.735	276.215	5.002	27.000
	103140	271.919	271.780	276.136	4.217	27.000
	103160	272.313	271.809	276.057	3.744	27.000
	103180	272.147	271.849	275.978	3.831	27.000
	103200	271.441	271.893	275.898	4.458	27.000
	103220	272.257	271.934	275.819	3.582	27.000
	103240	272.536	271.971	275.740	2.204	27.000
	103260	273.499	272	275.661	2.202	27.000
	103280	272.206	272.019	275.580	3.376	27.000
	103300	270.881	272.036	275.500	4.652	27.000
	103320	271.176	272.068	275.424	4.248	27.000
	103340	271.457	272.103	275.344	3.887	27.000
	103360	271.570	272.142	275.265	3.695	27.000
	103380	271.351	272.184	275.186	3.835	26.715
	103400	271.305	272.224	275.107	3.802	26.460
	103420	271.743	272.256	275.028	3.285	26.175
	103440	271.711	272.275	274.948	3.238	25.800
	103460	272.077	272.301	274.869	2.792	25.560
	103480	272.508	272.314	274.790	2.282	25.300
	103500	271.847	272.325	274.711	2.864	25.101
	103520	271.686	272.347	274.632	2.936	25.059
	103540	271.630	272.349	274.553	2.923	25.072
	103560	271.546	272.341	274.474	2.826	25.081
	103580	271.671	272.321	274.394	2.723	25.110
	103600	271.746	272.307	274.315	2.587	25.132
	103620	270.642	272.307	274.236	3.594	25.124
	103640	271.326	272.302	274.157	2.831	25.020
	103660	271.737	272.283	274.078	2.341	24.749
	103680	271.623	272.273	273.999	2.376	24.986
	103700	271.656	272.272	273.919	2.263	23.321

INDICATIVE DRAWING

DEDICATED FREIGHT CORRIDOR CORPORATION OF INDIA LTD.
 (A GOVERNMENT OF INDIA ENTERPRISE)

EASTERN CORRIDOR

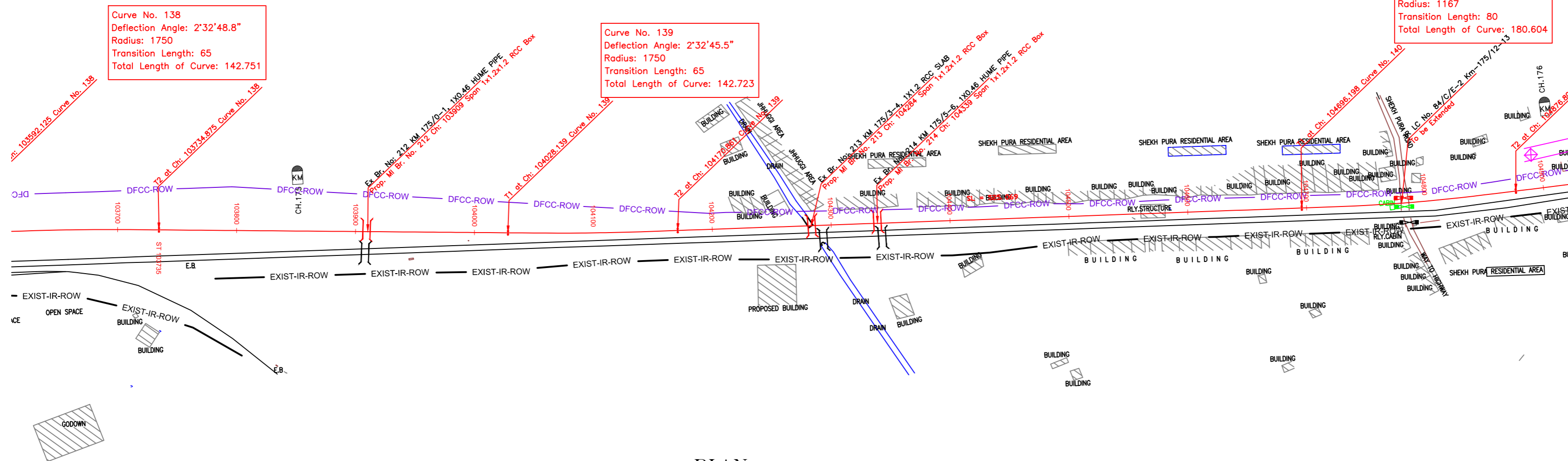
PROJECT
 KHURJA TO PILKHANI
 From Km 1367 (ALJN-GZB) to Km 187.5 (SRE-UMB)

CONTRACT PACKAGE - 303

TITLE
 PLAN AND PROFILE (Ch: 102500 to Ch: 103700)

SCALE
 SURVEY BY

DRAWING NO.
 GENERAL CONSULTANT
AECOM
 AECOM Asia Co. Ltd.
 9th Floor, Century Tower 2, DLF Cyber City
 DLF Phase II Gurgaon 122002, India

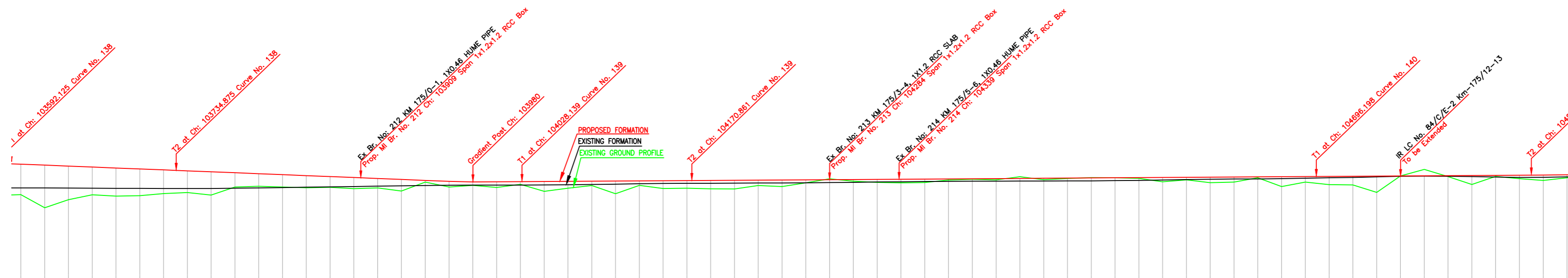


PLAN

NOTE:-
MINIMUM HEIGHT OF EMBANKMENT SHALL
BE PROVIDED AS PER RELEVANT PARA OF
PART 2 OF BID DOCUMENT.

LEGEND

EXIST. IR TRACK	
PROP. DFCC TRACK	
EXIST. LAND BOUNDARY	
DFC LAND BOUNDARY	
WORKS TO BE DONE BY OTHER CONTRACTOR	
PROPOSED BRIDGE	
PROP. STRUCTURE	
EXIST. STRUCTURE	
RIVER/NALA	
WELL	
TREE/TREE CLUSTER	
COMPOUND WALL	
WORK TO BE DISMANTLED	
HIGH TENSION LINE	
POND	
TELEPHONE POLE	
ELECTRIC LINE	
OHE TOWER	
HAND PUMP	
GPS PILLAR	
RAILWAY SIGNAL	
OHE MAST	
RELIGIOUS STRUCTURE	
PIPE LINE CORRIDOR	
ROAD	



L-SECTION

Gradient	Rise 1 in 1537	
Vertical Alignment		
HORIZONTAL ALIGNMENT		
Dist. Between Existing Main Track & Proposed Adjacent Track of DFC	25.132	25.132
Cut(-)/Fill(m)	2.567	25.132
Proposed F.L. (m)	214.315	214.315
EXISTING F.L. (m)	211.746	211.746
Ground Level (m)	211.746	211.746
KM	103900	104900

INDICATIVE DRAWING

DEDICATED FREIGHT CORRIDOR CORPORATION OF INDIA LTD.
(A GOVERNMENT OF INDIA ENTERPRISE)

EASTERN CORRIDOR

PROJECT
From Km 1367 (ALJN-GZB) to Km 187.5 (SRE-UMB)

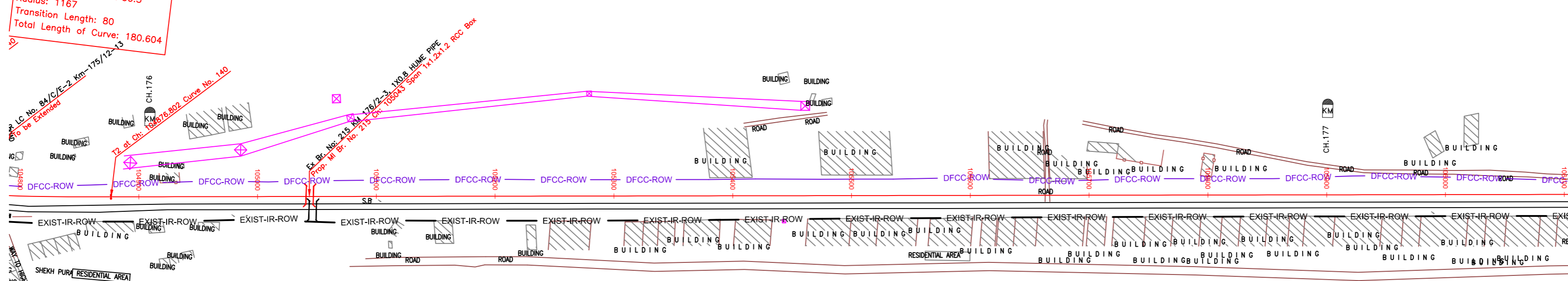
CONTRACT PACKAGE - 303

TITLE
PLAN AND PROFILE (Ch: 103700 to Ch: 104900)

SCALE
DRAWING NO.

SURVEY BY
GENERAL CONSULTANT
AECOM
AECOM Asia Co. Ltd.
5th Floor, Liberty Tower C DLF Cyber City
DLF Phase II Gurgaon 122002, India

Curve No. 140
 Deflection Angle: 4°56'30.5"
 Radius: 1167
 Transition Length: 80
 Total Length of Curve: 180.604

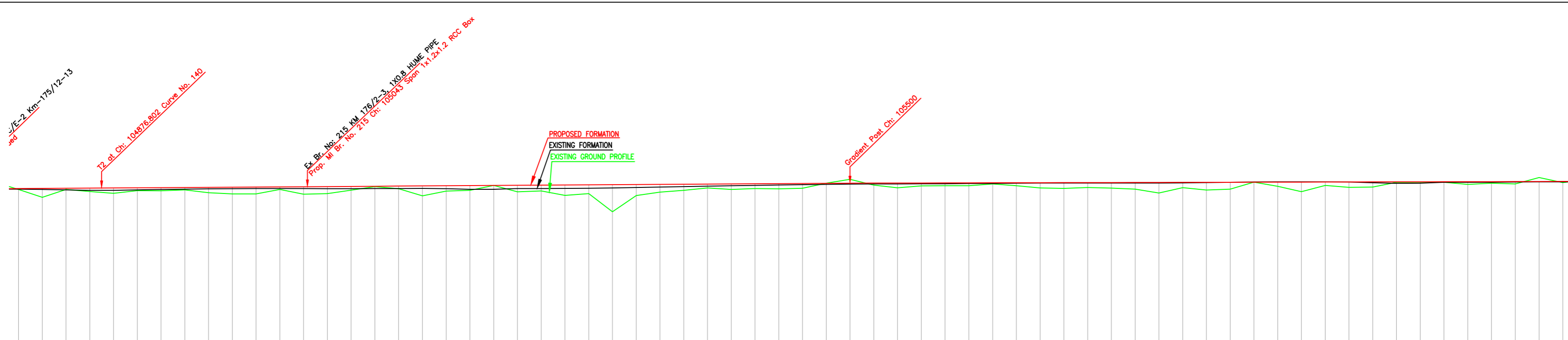


PLAN

NOTE:-
 MINIMUM HEIGHT OF EMBANKMENT SHALL
 BE PROVIDED AS PER RELEVANT PARA OF
 PART 2 OF BID DOCUMENT.

LEGEND

EXIST. IR TRACK	—
PROP. DFCC TRACK	—
EXIST. LAND BOUNDARY	—
DFC LAND BOUNDARY	—
WORKS TO BE DONE BY OTHER CONTRACTOR	—
PROPOSED BRIDGE	—
PROP. STRUCTURE	—
EXIST. STRUCTURE	—
RIVER/NALA	—
WELL	—
TREE/TREE CLUSTER	—
COMPOUND WALL	—
WORK TO BE DISMANTLED	—
HIGH TENSION LINE	—
POND	—
TELEPHONE POLE	—
ELECTRIC LINE	—
OHE TOWER	—
HAND PUMP	—
GPS PILLAR	—
RAILWAY SIGNAL	—
OHE MAST	—
RELIGIOUS STRUCTURE	—
PIPE LINE CORRIDOR	—
ROAD	—



L-SECTION

Gradient	Rise 1 in 1537		Rise 1 in 4250	
Vertical Alignment				
HORIZONTAL ALIGNMENT				
Dist. Between Existing Main Track & Proposed Adjacent Track of DFC	8.123	8.123	8.123	8.123
Cut(-)/Fill(m)	0.078	0.795	0.097	0.206
Proposed F.L. (m)	273.346	273.338	273.327	273.304
EXISTING F.L. (m)	273.267	273.285	273.227	273.098
Ground Level (m)	273.287	273.294	273.274	273.189
KM	104800	104900	105000	105100

INDICATIVE DRAWING

DEDICATED FREIGHT CORRIDOR CORPORATION OF INDIA LTD.
 (A GOVERNMENT OF INDIA ENTERPRISE)

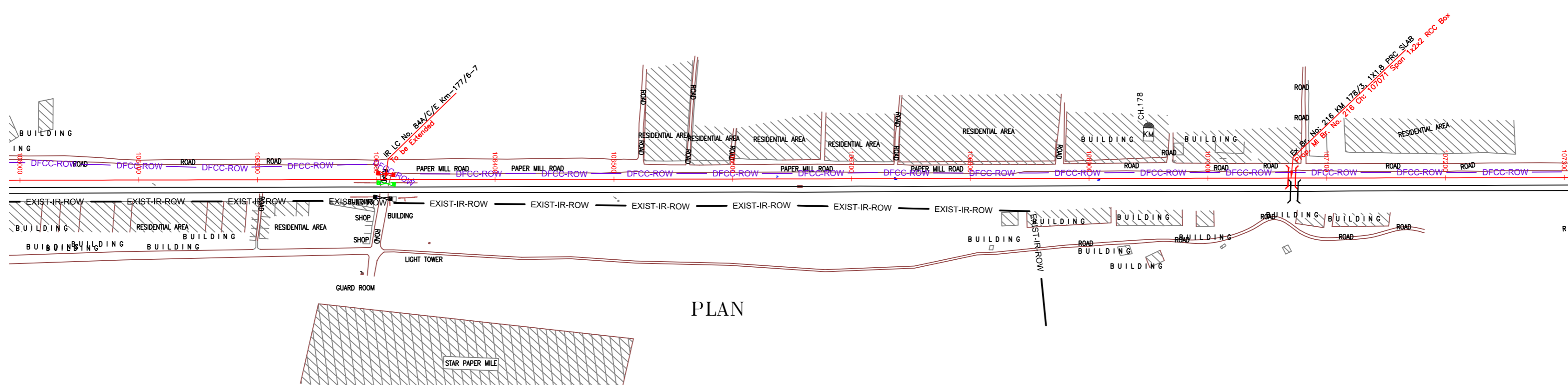
EASTERN CORRIDOR

PROJECT
 KHURJA TO PILKHANI
 From Km 1367 (ALJN-GZB) to Km 187.5 (SRE-UMB)

CONTRACT PACKAGE - 303

TITLE
 PLAN AND PROFILE (Ch: 104900 to Ch: 106100)

SCALE
 DRAWING NO. GENERAL CONSULTANT
AECOM
 AECOM Asia Co. Ltd.
 5th Floor, Jangra Tower C DLF Cyber City
 DLF Phase II Gurgaon 122002, India

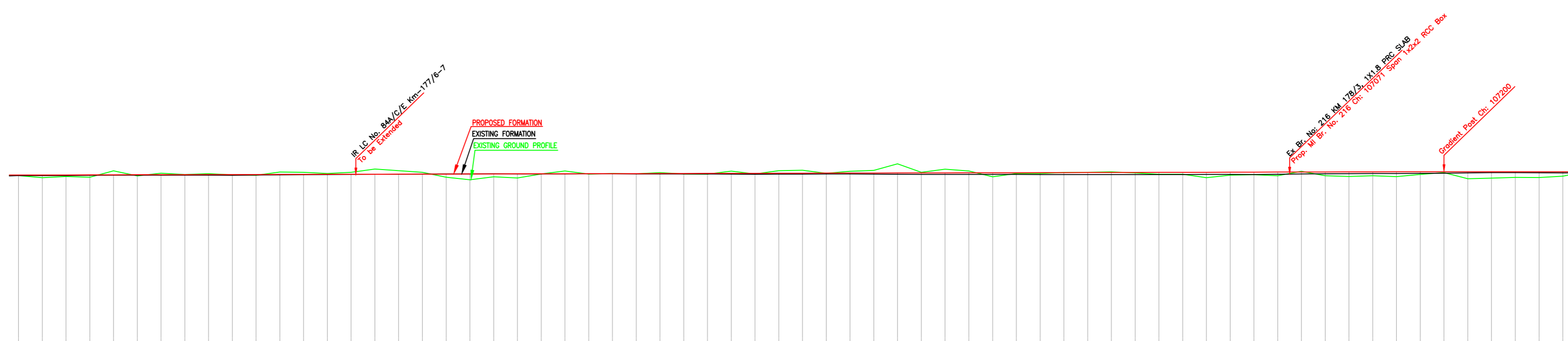


PLAN

NOTE:-
MINIMUM HEIGHT OF EMBANKMENT SHALL
BE PROVIDED AS PER RELEVANT PARA OF
PART 2 OF BID DOCUMENT.

LEGEND

EXIST. IR TRACK	---
PROP. DFCC TRACK	—
EXIST. LAND BOUNDARY	—
DFC LAND BOUNDARY	—
WORKS TO BE DONE BY OTHER CONTRACTOR	—
PROPOSED BRIDGE	⌋
PROP. STRUCTURE	▨
EXIST. STRUCTURE	▨
RIVER/NALA	—
WELL	○
TREE/TREE CLUSTER	⊕
COMPOUND WALL	—
WORK TO BE DISMANTLED	—
HIGH TENSION LINE	⊠
POND	—
TELEPHONE POLE	⊕
ELECTRIC LINE	—
OHE TOWER	⊕
HAND PUMP	⊕
GPS PILLAR	⊕
RAILWAY SIGNAL	⊕
OHE MAST	⊕
RELIGIOUS STRUCTURE	⊕
PIPE LINE CORRIDOR	—
ROAD	—



L-SECTION

Gradient	Rise 1 in 4250	
Vertical Alignment		
HORIZONTAL ALIGNMENT		
Dist. Between Existing Main Track & Proposed Adjacent Track of DFC	6.169	6.208
Cut(-)/Fill(+) (m)	0.052	0.302
Proposed F.L. (m)	273.918	274.200
EXISTING F.L. (m)	273.866	273.898
Ground Level (m)	273.866	273.898
KM	106100	107300

INDICATIVE DRAWING

DEDICATED FREIGHT CORRIDOR CORPORATION OF INDIA LTD.
(A GOVERNMENT OF INDIA ENTERPRISE)

EASTERN CORRIDOR

PROJECT
KHURJA TO PILKHANI
From Km 1367 (ALJN-GZB) to Km 187.5 (SRE-UMB)

CONTRACT PACKAGE - 303

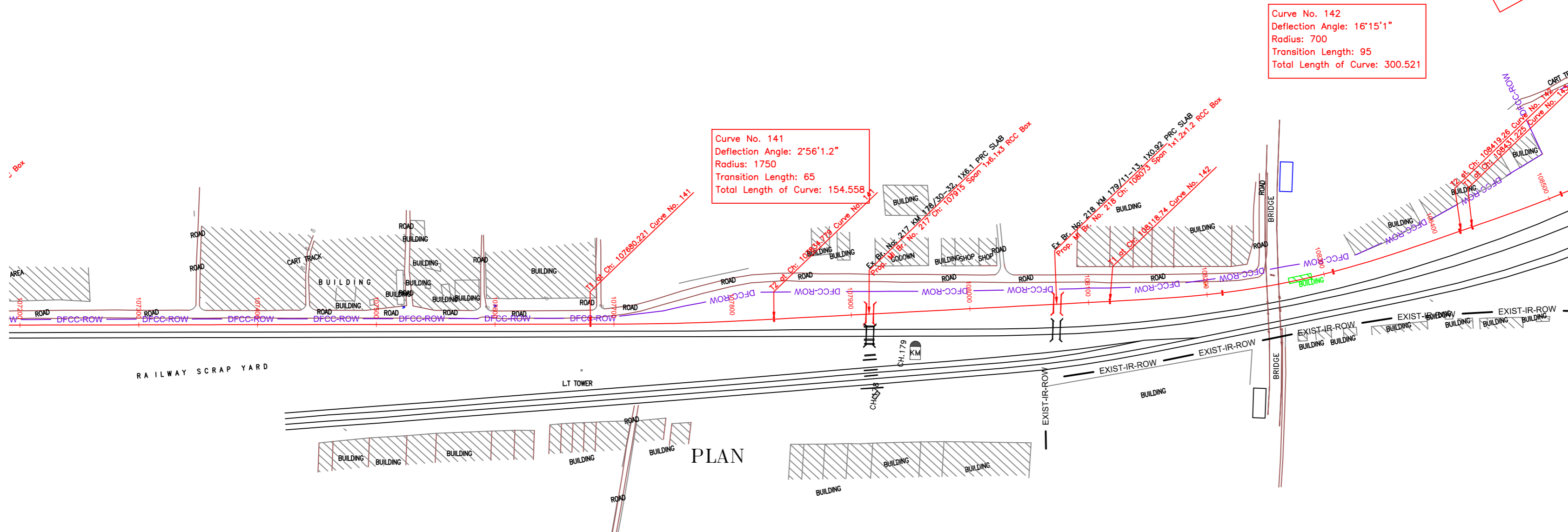
TITLE
PLAN AND PROFILE (Ch: 106100 to Ch: 107300)

SCALE
DRAWING NO.
GENERAL CONSULTANT
AECOM
AECOM Asia Co. Ltd.
5th Floor, Gateway Tower C DLF Cyber City
DLF Phase II Gurgaon 122002, India

KHURJA

PILKHANI 9°8'6"

PROJECT SHEET NO. 183



Curve No. 141
Deflection Angle: 2°56'1.2"
Radius: 1750
Transition Length: 65
Total Length of Curve: 154.558

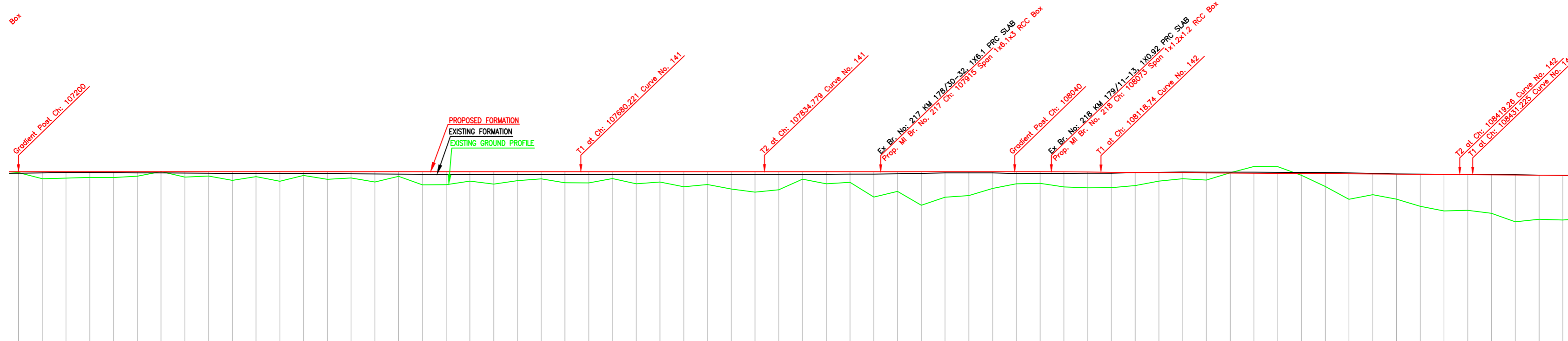
Curve No. 142
Deflection Angle: 16°15'1"
Radius: 700
Transition Length: 95
Total Length of Curve: 300.521

Curve No. 143
Deflection Angle: 9°8'6"
Radius: 700
Transition Length: 95
Total Length of Curve: 300.521

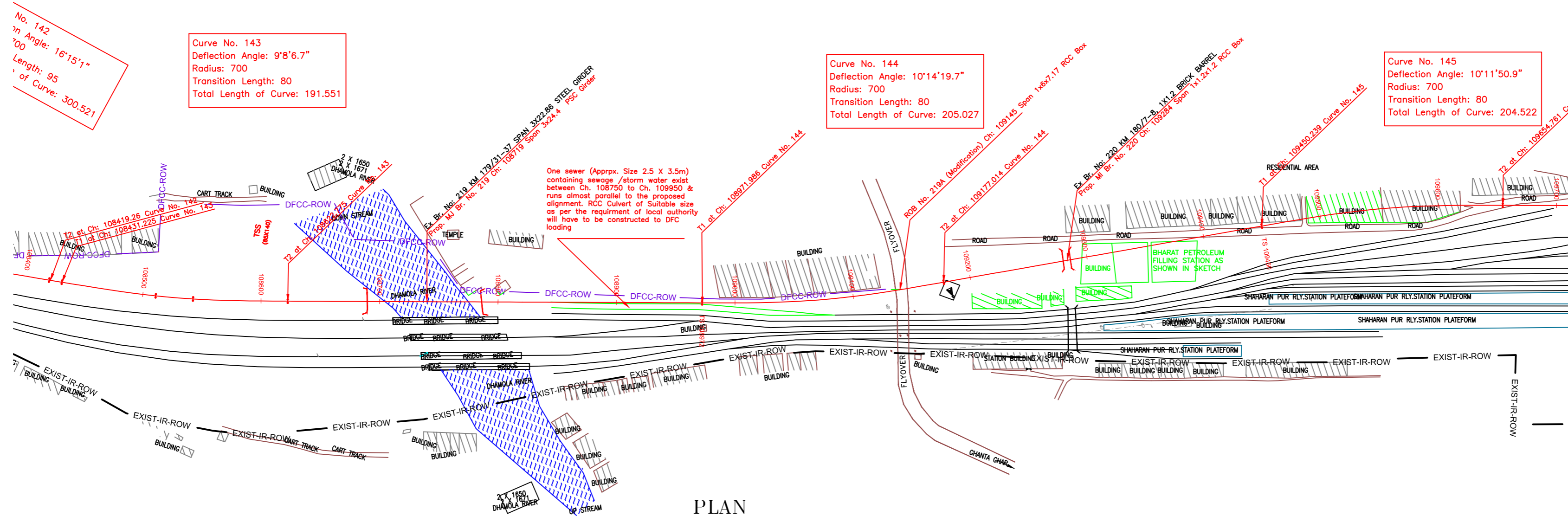
NOTE:-
MINIMUM HEIGHT OF EMBANKMENT SHALL
BE PROVIDED AS PER RELEVANT PARA OF
PART 2 OF BID DOCUMENT.

LEGEND

EXIST. IR TRACK	—
PROP. DFCC TRACK	—
EXIST. LAND BOUNDARY	—
DFC LAND BOUNDARY	—
WORKS TO BE DONE BY OTHER CONTRACTOR	—
PROPOSED BRIDGE	—
PROP. STRUCTURE	—
EXIST. STRUCTURE	—
RIVER/NALA	—
WELL	—
TREE/TREE CLUSTER	—
COMPOUND WALL	—
WORK TO BE DISMANTLED	—
HIGH TENSION LINE	—
POND	—
TELEPHONE POLE	—
ELECTRIC LINE	—
OHE TOWER	—
HAND PUMP	—
GPS PILLAR	—
RAILWAY SIGNAL	—
OHE MAST	—
RELIGIOUS STRUCTURE	—
PIPE LINE CORRIDOR	—
ROAD	—



Gradient	27.7200	Level																				27.7200	Fall 1 in 1509																																																																																																																																																																																																																																																																																																																																																																																																																																																																																																																																																																																																																																																																																																																																																																																																																																																																																		
Vertical Alignment																																																																																																																																																																																																																																																																																																																																																																																																																																																																																																																																																																																																																																																																																																																																																																																																																																																																																																									
HORIZONTAL ALIGNMENT																																																																																																																																																																																																																																																																																																																																																																																																																																																																																																																																																																																																																																																																																																																																																																																																																																																																																																									
Dist. Between Existing Main Track & Proposed Adjacent Track of DFC	6.451	6.409	6.285	6.217	6.204	6.208	6.207	6.201	6.195	6.189	6.181	6.169	6.156	6.142	6.129	6.121	6.117	6.114	6.112	6.107	6.096	6.083	6.064	6.048	6.037	6.053	6.074	6.159	6.367	6.752	7.282	7.927	8.635	9.403	10.245	11.178	12.171	13.183	14.151	15.138	16.159	17.165	18.131	19.048	19.948	20.824	21.677	22.508	23.317	24.104	24.868	25.610	26.329	27.026	27.701	28.355	28.989	29.603	30.197	30.771	31.326	31.861	32.377	32.874	33.352	33.811	34.251	34.672	35.075	35.460	35.827	36.176	36.507	36.820	37.115	37.392	37.651	37.892	38.116	38.323	38.513	38.686	38.842	38.981	39.103	39.209	39.300	39.376	39.438	39.486	39.521	39.543	39.553	39.551	39.537	39.511	39.473	39.425	39.367	39.299	39.222	39.136	39.041	38.937	38.824	38.702	38.571	38.432	38.285	38.131	37.969	37.800	37.625	37.444	37.257	37.064	36.865	36.660	36.449	36.232	36.010	35.783	35.551	35.314	35.072	34.825	34.573	34.316	34.054	33.787	33.515	33.238	32.956	32.669	32.377	32.080	31.778	31.471	31.160	30.844	30.523	30.197	29.866	29.530	29.189	28.843	28.492	28.136	27.775	27.409	27.038	26.662	26.281	25.895	25.504	25.108	24.707	24.301	23.890	23.474	23.053	22.627	22.196	21.760	21.319	20.873	20.422	19.966	19.505	19.039	18.568	18.092	17.611	17.125	16.634	16.138	15.637	15.131	14.620	14.104	13.583	13.057	12.526	11.990	11.449	10.903	10.352	9.796	9.235	8.669	8.098	7.522	6.941	6.355	5.764	5.168	4.567	3.961	3.350	2.734	2.113	1.487	0.856	0.220	-0.421	-1.061	-1.699	-2.336	-2.972	-3.607	-4.241	-4.873	-5.504	-6.134	-6.762	-7.389	-8.015	-8.640	-9.264	-9.887	-10.509	-11.130	-11.750	-12.368	-12.985	-13.601	-14.216	-14.830	-15.443	-16.055	-16.666	-17.276	-17.884	-18.491	-19.097	-19.702	-20.306	-20.909	-21.511	-22.112	-22.712	-23.311	-23.908	-24.504	-25.099	-25.693	-26.286	-26.878	-27.469	-28.059	-28.648	-29.236	-29.823	-30.409	-30.994	-31.578	-32.161	-32.743	-33.324	-33.904	-34.483	-35.061	-35.638	-36.214	-36.789	-37.363	-37.936	-38.508	-39.079	-39.649	-40.218	-40.786	-41.353	-41.919	-42.484	-43.048	-43.611	-44.173	-44.734	-45.294	-45.853	-46.411	-46.968	-47.524	-48.079	-48.633	-49.186	-49.738	-50.289	-50.839	-51.388	-51.936	-52.483	-53.029	-53.574	-54.118	-54.661	-55.203	-55.744	-56.284	-56.823	-57.361	-57.898	-58.434	-58.969	-59.503	-60.036	-60.568	-61.100	-61.631	-62.161	-62.690	-63.218	-63.745	-64.271	-64.796	-65.320	-65.843	-66.365	-66.886	-67.406	-67.924	-68.441	-68.957	-69.472	-69.986	-70.500	-71.012	-71.523	-72.033	-72.542	-73.050	-73.557	-74.063	-74.568	-75.072	-75.575	-76.077	-76.578	-77.078	-77.577	-78.074	-78.570	-79.065	-79.559	-80.052	-80.544	-81.035	-81.525	-82.013	-82.500	-82.986	-83.471	-83.955	-84.438	-84.920	-85.401	-85.880	-86.358	-86.835	-87.311	-87.786	-88.260	-88.733	-89.205	-89.676	-90.145	-90.613	-91.080	-91.545	-92.009	-92.472	-92.934	-93.395	-93.854	-94.312	-94.769	-95.224	-95.678	-96.130	-96.581	-97.030	-97.478	-97.924	-98.369	-98.812	-99.254	-99.694	-100.133	-100.570	-101.005	-101.438	-101.869	-102.299	-102.727	-103.153	-103.578	-104.001	-104.422	-104.841	-105.258	-105.673	-106.086	-106.497	-106.906	-107.313	-107.718	-108.121	-108.522	-108.921	-109.318	-109.713	-110.106	-110.497	-110.886	-111.273	-111.658	-112.041	-112.422	-112.801	-113.178	-113.553	-113.926	-114.297	-114.666	-115.033	-115.398	-115.761	-116.122	-116.481	-116.838	-117.193	-117.546	-117.897	-118.246	-118.593	-118.938	-119.281	-119.622	-119.961	-120.300	-120.637	-120.972	-121.305	-121.636	-121.965	-122.292	-122.617	-122.940	-123.261	-123.580	-123.897	-124.212	-124.525	-124.836	-125.145	-125.452	-125.757	-126.060	-126.361	-126.660	-126.957	-127.252	-127.545	-127.836	-128.125	-128.412	-128.697	-128.980	-129.261	-129.540	-129.817	-130.092	-130.365	-130.636	-130.905	-131.172	-131.437	-131.700	-131.961	-132.220	-132.477	-132.732	-132.985	-133.236	-133.485	-133.732	-133.977	-134.220	-134.461	-134.700	-134.937	-135.172	-135.405	-135.636	-135.865	-136.092	-136.317	-136.540	-136.761	-136.980	-137.197	-137.412	-137.625	-137.836	-138.045	-138.252	-138.457	-138.660	-138.861	-139.060	-139.257	-139.452	-139.645	-139.836	-140.025	-140.212	-140.397	-140.580	-140.761	-140.940	-141.117	-141.292	-141.465	-141.636	-141.805	-141.972	-142.137	-142.300	-142.461	-142.620	-142.777	-142.932	-143.085	-143.236	-143.385	-143.532	-143.677	-143.820	-143.961	-144.100	-144.237	-144.372	-144.505	-144.636	-144.765	-144.892	-145.017	-145.140	-145.261	-145.380	-145.497	-145.612	-145.725	-145.836	-145.945	-146.052	-146.157	-146.260	-146.361	-146.460	-146.557	-146.652	-146.745	-146.836	-146.925	-147.012	-147.097	-147.180	-147.261	-147.340	-147.417	-147.492	-147.565	-147.636	-147.705	-147.772	-147.837	-147.900	-147.961	-148.020	-148.077	-148.132	-148.185	-148.236	-148.285	-148.332	-148.377	-148.420	-148.461	-148.500	-148.537	-148.572	-148.605	-148.636	-148.665	-148.692	-148.717	-148.740	-148.761	-148.780	-148.797	-148.812	-148.825	-148.836	-148.845	-148.852	-148.857	-148.860	-148.861	-148.860	-148.857	-148.852	-148.845	-148.836	-148.825	-148.812	-148.797	-148.780	-148.761	-148.740	-148.717	-148.692	-148.665	-148.636	-148.605	-148.572	-148.537	-148.500	-148.461	-148.420	-148.377	-148.332	-148.285	-148.236	-148.185	-148.132	-148.077	-148.020	-147.961	-147.900	-147.837	-147.772	-147.705	-147.636	-147.565	-147.492	-147.417	-147.340	-147.261	-147.180	-147.097	-147.012	-146.925	-146.836	-146.745	-146.652	-146.557	-146.460	-146.361	-146.260	-146.157	-146.052	-145.945	-145.836	-145.725	-145.612	-145.497	-145.380	-145.261	-145.140	-145.017	-144.892	-144.765	-144.636	-144.500	-144.365	-144.230	-144.085	-143.940	-143.795	-143.650	-143.505	-143.360	-143.215	-143.070	-142.925	-142.780	-142.635	-142.490	-142.345	-142.200	-142.055	-141.910	-141.765	-141.620	-141.475	-141.330	-141.185	-141.040	-140.895	-140.750	-140.605	-140.460	-140.315	-140.170	-140.025	-139.880	-139.735	-139.590	-139.445	-139.300	-139.155	-139.010	-138.865	-138.720	-138.575	-138.430	-138.285	-138.140	-137.995	-137.850	-137.705	-137.560	-137.415	-137.270	-137.125	-136.980	-136.835	-136.690	-136.545	-136.400	-136.255	-136.110	-135.965	-135.820	-135.675	-135.530	-135.385	-135.240	-135.095	-134.950	-134.805	-134.660	-134.515	-134.370	-134.225	-134.080	-133.935	-133.790	-133.645	-133.500	-133.355	-133.210	-133.065	-132.920	-132.775	-132.630	-132.485	-132.340	-132.195	-132.050	-131.905	-131.760	-131.615	-131.470	-131.325	-131.180	-131.035	-130.890	-130.745	-130.600	-130.455	-130.310	-130.165	-129.920	-129.775	-129.630	-129.485	-129.340	-129.195	-129.050	-128.905	-128.760	-128.615	-128.470	-128.325	-128.180	-128.035	-127.890	-127.745	-127.600	-127.455	-127.310	-127.165	-127.020	-126.875	-126.730	-126.585	-126.440	-126.295	-126.150	-126.005	-125.860	-125.715	-125.570	-125.425	-125.280	-125.135	-124.990	-124.845	-124.700	-124.555	-124.410	-124.265	-124.120	-123.975	-123.830	-123.685	-123.540	-123.395	-123.250	-123.105	-122.960	-122.815	-122.670	-122.525	-122.380	-122.235	-122.090	-121.945	-121.800	-121.655	-121.510	-121.365	-121.220	-121.075	-120.930	-120.785	-120.640	-120.495	-120.350	-120.205	-120.060	-119.915	-119.770	-119.625	-119.480	-119.335	-119.190	-119.045	-118.900	-118.755	-118.610	-118.465	-118.320	-118.175	-118.030	-117.885	-117.740	-117.595	-117.450	-117.305	-117.160	-117.015	-116.870	-116.725	-116.580	-116.435	-116.290	-116.145	-116.000	-115



PLAN

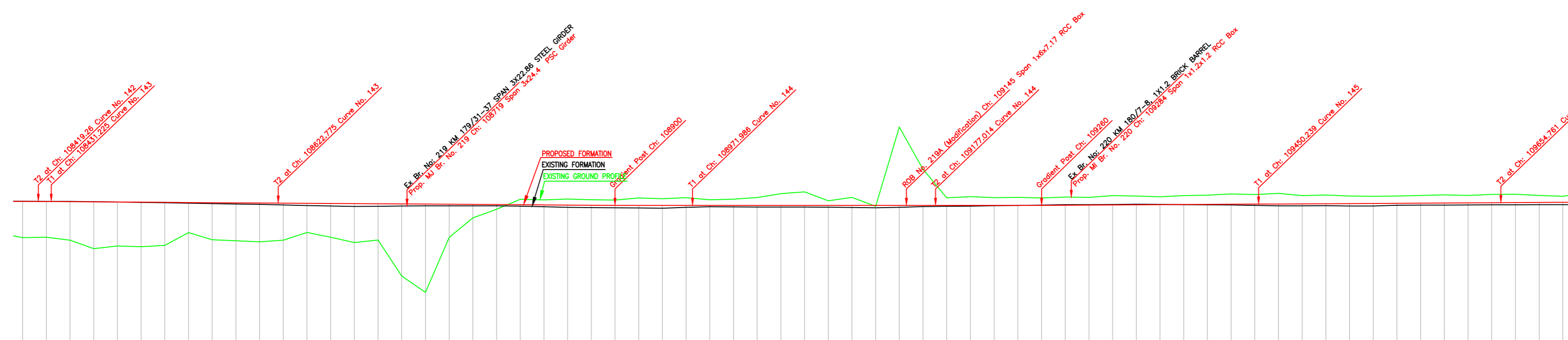
NOTE:-
MINIMUM HEIGHT OF EMBANKMENT SHALL BE PROVIDED AS PER RELEVANT PARA OF PART 2 OF BID DOCUMENT.

LEGEND

EXIST. IR TRACK	
PROP. DFCC TRACK	
EXIST. LAND BOUNDARY	
DFC LAND BOUNDARY	
WORKS TO BE DONE BY OTHER CONTRACTOR	
PROPOSED BRIDGE	
PROP. STRUCTURE	
EXIST. STRUCTURE	
RIVER/NALA	
WELL	
TREE/TREE CLUSTER	
COMPOUND WALL	
WORK TO BE DISMANTLED	
HIGH TENSION LINE	
POND	
TELEPHONE POLE	
ELECTRIC LINE	
OHE TOWER	
HAND PUMP	
GPS PILLAR	
RAILWAY SIGNAL	
OHE MAST	
RELIGIOUS STRUCTURE	
PIPE LINE CORRIDOR	
ROAD	

INDICATIVE DRAWING

DEDICATED FREIGHT CORRIDOR CORPORATION OF INDIA LTD. (A GOVERNMENT OF INDIA ENTERPRISE)	
PROJECT KHURJA TO PILKHANI From Km 1367 (ALJN-GZB) to Km 187.5 (SRE-UMB)	
CONTRACT PACKAGE - 303	
TITLE PLAN AND PROFILE (Ch: 108500 to Ch: 109700)	
SCALE	DRAWING NO.
SURVEY BY	GENERAL CONSULTANT AECOM AECOM Asia Co. Ltd. 5th Floor, Unitary Tower C of Cyber City 121, Phase 1, Connaught Place, New Delhi



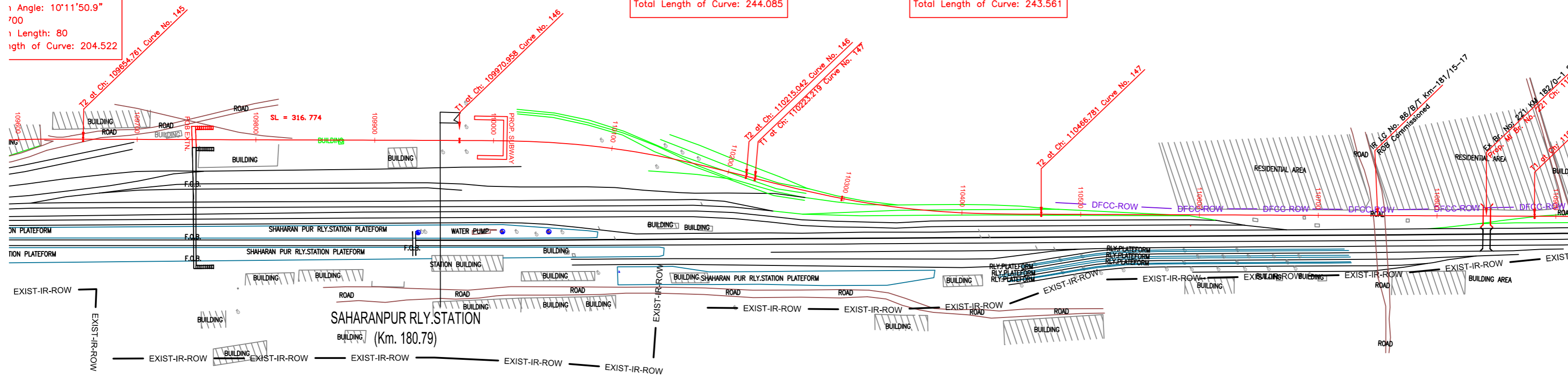
L-SECTION

Gradient	Fall 1 in 1509	Level	Rise 1 in 1730
Vertical Alignment			
HORIZONTAL ALIGNMENT			
Dist. Between Existing Main Track & Proposed Adjacent Track of DFC	16.885	17.207	17.170
Cut(-)/Fill(m)	3.038	2.997	3.238
Proposed F.L. (m)	273.961	273.944	273.932
EXISTING F.L. (m)	270.923	270.946	270.934
Ground Level (m)	270.923	270.946	270.934
KM	108400	108500	108600

Curve No. 145
 Deflection Angle: 10°11'50.9"
 Radius: 700
 Transition Length: 80
 Total Length of Curve: 204.522

Curve No. 146
 Deflection Angle: 13°50'48.4"
 Radius: 700
 Transition Length: 75
 Total Length of Curve: 244.085

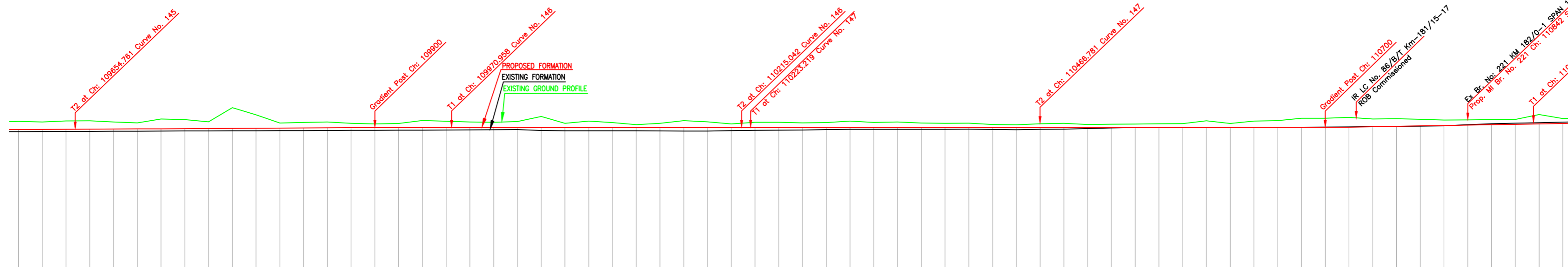
Curve No. 147
 Deflection Angle: 13°48'14.1"
 Radius: 700
 Transition Length: 75
 Total Length of Curve: 243.561



PLAN

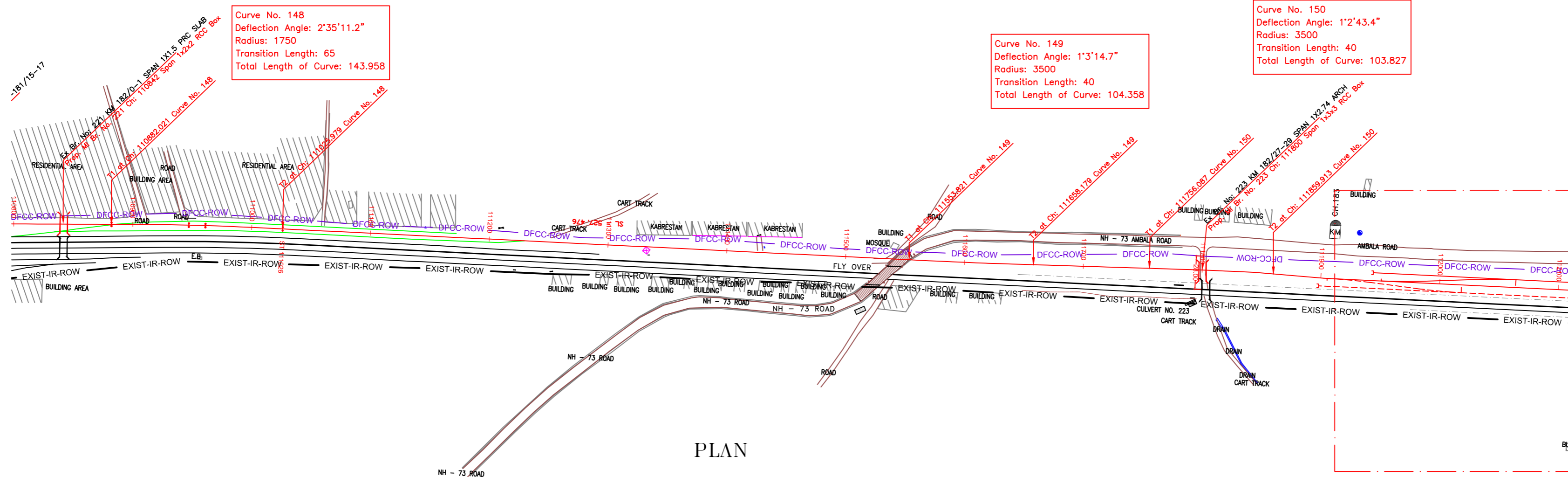
NOTE:-
 MINIMUM HEIGHT OF EMBANKMENT SHALL
 BE PROVIDED AS PER RELEVANT PARA OF
 PART 2 OF BID DOCUMENT.

LEGEND	
EXIST. IR TRACK	
PROP. DFCC TRACK	
EXIST. LAND BOUNDARY	
DFC LAND BOUNDARY	
WORKS TO BE DONE BY OTHER CONTRACTOR	
PROPOSED BRIDGE	
PROP. STRUCTURE	
EXIST. STRUCTURE	
RIVER/NALA	
WELL	
TREE/TREE CLUSTER	
COMPOUND WALL	
WORK TO BE DISMANTLED	
HIGH TENSION LINE	
POND	
TELEPHONE POLE	
ELECTRIC LINE	
OHE TOWER	
HAND PUMP	
GPS PILLAR	
RAILWAY SIGNAL	
OHE MAST	
RELIGIOUS STRUCTURE	
PIPE LINE CORRIDOR	
ROAD	



L-SECTION

Gradient	30	27.4	Level	27.4																																																																																																																																																																																																																																																																																														
Vertical Alignment																																																																																																																																																																																																																																																																																																		
HORIZONTAL ALIGNMENT																																																																																																																																																																																																																																																																																																		
Dist. Between Existing Main Track & Proposed Adjacent Track of DFC	84.267	84.502	84.517	84.439	84.382	84.295	84.237	84.188	84.148	84.118	84.092	84.076	84.066	84.064	84.068	84.078	84.093	84.112	84.106	84.082	83.914	83.528	82.778	81.578	79.872	77.648	74.901	71.995	67.602	63.086	58.378	53.485	48.305	43.197	38.338	33.803	30.106	26.866	24.376	22.261	21.028	19.716	19.417	19.201	18.885	18.735	18.506	18.313	18.111	17.899	17.678	17.463	17.267	17.073	16.874	16.653	16.459	16.249	16.020	15.770	15.521	15.272	15.037	14.827	14.613																																																																																																																																																																																																																																	
Cut(-)/Fill(m)	-0.688	-0.625	-0.700	-0.705	-0.591	-0.502	-0.827	-0.794	-0.560	-1.736	-1.127	-0.427	-0.458	-0.488	-0.364	-0.306	-0.344	-0.592	-0.330	-0.471	-0.447	-0.510	-0.936	-0.353	-0.545	-0.413	-0.246	-0.349	-0.577	-0.479	-0.303	-0.443	-0.439	-0.300	-0.421	-0.536	-0.424	-0.466	-0.379	-0.355	-0.364	-0.248	-0.209	-0.230	-0.318	-0.346	-0.253	-0.274	-0.296	-0.318	-0.333	-0.562	-0.339	-0.544	-0.594	-0.778	-0.785	-0.822	-0.654	-0.640	-0.558	-0.456	-0.435	-0.424	-0.404	-0.785	-0.410	14.473																																																																																																																																																																																																																														
Proposed F.L. (m)	273.827	273.838	273.850	273.861	273.872	273.883	273.894	273.905	273.916	273.927	273.938	273.949	273.960	273.971	273.982	273.993	274.004	274.015	274.026	274.037	274.048	274.059	274.070	274.081	274.092	274.103	274.114	274.125	274.136	274.147	274.158	274.169	274.180	274.191	274.202	274.213	274.224	274.235	274.246	274.257	274.268	274.279	274.290	274.301	274.312	274.323	274.334	274.345	274.356	274.367	274.378	274.389	274.400	274.411	274.422	274.433	274.444	274.455	274.466	274.477	274.488	274.499	274.510	274.521	274.532	274.543	274.554	274.565	274.576	274.587	274.598	274.609	274.620	274.631	274.642	274.653	274.664	274.675	274.686	274.697	274.708	274.719	274.730	274.741	274.752	274.763	274.774	274.785	274.796	274.807	274.818	274.829	274.840	274.851	274.862	274.873	274.884	274.895	274.906	274.917	274.928	274.939	274.950	274.961	274.972	274.983	274.994	275.005	275.016	275.027	275.038	275.049	275.060	275.071	275.082	275.093	275.104	275.115	275.126	275.137	275.148	275.159	275.170	275.181	275.192	275.203	275.214	275.225	275.236	275.247	275.258	275.269	275.280	275.291	275.302	275.313	275.324	275.335	275.346	275.357	275.368	275.379	275.390	275.401	275.412	275.423	275.434	275.445	275.456	275.467	275.478	275.489	275.500	275.511	275.522	275.533	275.544	275.555	275.566	275.577	275.588	275.599	275.610	275.621	275.632	275.643	275.654	275.665	275.676	275.687	275.698	275.709	275.720	275.731	275.742	275.753	275.764	275.775	275.786	275.797	275.808	275.819	275.830	275.841	275.852	275.863	275.874	275.885	275.896	275.907	275.918	275.929	275.940	275.951	275.962	275.973	275.984	275.995	276.006	276.017	276.028	276.039	276.050	276.061	276.072	276.083	276.094	276.105	276.116	276.127	276.138	276.149	276.160	276.171	276.182	276.193	276.204	276.215	276.226	276.237	276.248	276.259	276.270	276.281	276.292	276.303	276.314	276.325	276.336	276.347	276.358	276.369	276.380	276.391	276.402	276.413	276.424	276.435	276.446	276.457	276.468	276.479	276.490	276.501	276.512	276.523	276.534	276.545	276.556	276.567	276.578	276.589	276.600	276.611	276.622	276.633	276.644	276.655	276.666	276.677	276.688	276.699	276.710	276.721	276.732	276.743	276.754	276.765	276.776	276.787	276.798	276.809	276.820	276.831	276.842	276.853	276.864	276.875	276.886	276.897	276.908	276.919	276.930	276.941	276.952	276.963	276.974	276.985	276.996	277.007
EXISTING F.L. (m)	273.657	273.664	273.672	273.679	273.687	273.694	273.701	273.708	273.716	273.724	273.731	273.739	273.746	273.754	273.761	273.768	273.776	273.783	273.791	273.798	273.805	273.812	273.820	273.828	273.835	273.843	273.851	273.858	273.866	273.874	273.881	273.889	273.896	273.904	273.911	273.919	273.926	273.934	273.941	273.949	273.956	273.964	273.971	273.979	273.986	273.994	274.001	274.009	274.016	274.024	274.031	274.039	274.046	274.054	274.061	274.069	274.076	274.084	274.091	274.099	274.106	274.114	274.121	274.129	274.136	274.144	274.151	274.159	274.166	274.174	274.181	274.189	274.196	274.204	274.211	274.219	274.226	274.234	274.241	274.249	274.256	274.264	274.271	274.279	274.286	274.294	274.301	274.309	274.316	274.324	274.331	274.339	274.346	274.354	274.361	274.369	274.376	274.384	274.391	274.399	274.406	274.414	274.421	274.429	274.436	274.444	274.451	274.459	274.466	274.474	274.481	274.489	274.496	274.504	274.511	274.519	274.526	274.534	274.541	274.549	274.556	274.564	274.571	274.579	274.586	274.594	274.601	274.609	274.616	274.624	274.631	274.639	274.646	274.654	274.661	274.669	274.676	274.684	274.691	274.699	274.706	274.714	274.721	274.729	274.736	274.744	274.751	274.759	274.766	274.774	274.781	274.789	274.796	274.804	274.811	274.819	274.826	274.834	274.841	274.849	274.856	274.864	274.871	274.879	274.886	274.894	274.901	274.909	274.916	274.924	274.931	274.939	274.946	274.954	274.961	274.969	274.976	274.984	274.991	275.000																																																																																																														
Ground Level (m)	274.515	274.463	274.550	274.566	274.464	274.396	274.694	274.725	274.701	274.671	274.631	274.581	274.531	274.481	274.431	274.381	274.331	274.281	274.231	274.181	274.131	274.081	274.031	273.981	273.931	273.881	273.831	273.781	273.731	273.681	273.631	273.581	273.531	273.481	273.431	273.381	273.331	273.281	273.231	273.181	273.131	273.081	273.031	272.981	272.931	272.881	272.831	272.781	272.731	272.681	272.631	272.581	272.531	272.481	272.431	272.381	272.331	272.281	272.231	272.181	272.131	272.081	272.031	271.981	271.931	271.881	271.831	271.781	271.731	271.681	271.631	271.581	271.531	271.481	271.431	271.381	271.331	271.281	271.231	271.181	271.131	271.081	271.031	270.981	270.931	270.881	270.831	270.781	270.731	270.681	270.631	270.581	270.531	270.481	270.431	270.381	270.331	270.281	270.231	270.181	270.131	270.081	270.031	269.981	269.931	269.881	269.831	269.781	269.731	269.681	269.631	269.581	269.531	269.481	269.431	269.381	269.331	269.281	269.231	269.181	269.131	269.081	269.031	268.981	268.931	268.881	268.831	268.781	268.731	268.681	268.631	268.581	268.531	268.481	268.431	268.381	268.331	268.281	268.231	268.181	268.131	268.081	268.031	267.981	267.931	267.881	267.831	267.781	267.731	267.681	267.631	267.581	267.531	267.481	267.431	267.381	267.331	267.281	267.231	267.181	267.131	267.081	267.031	266.981	266.931	266.881	266.831	266.781	266.731	266.681	266.631	266.581	266.531	266.481	266.431	266.381	266.331	266.281	266.231	266.181	266.131	266.081	266.031	265.981	265.931	265.881	265.831	265.781	265.731	265.681	265.631	265.581	265.531	265.481	265.431	265.381	265.331	265.281	265.231	265.181	265.131	265.081	265.031	264.981	264.931	264.881	264.831	264.781	264.731	264.681	264.631	264.581	264.531	264.481	264.431	264.381	264.331	264.281	264.231	264.181	264.131	264.08																																																																				

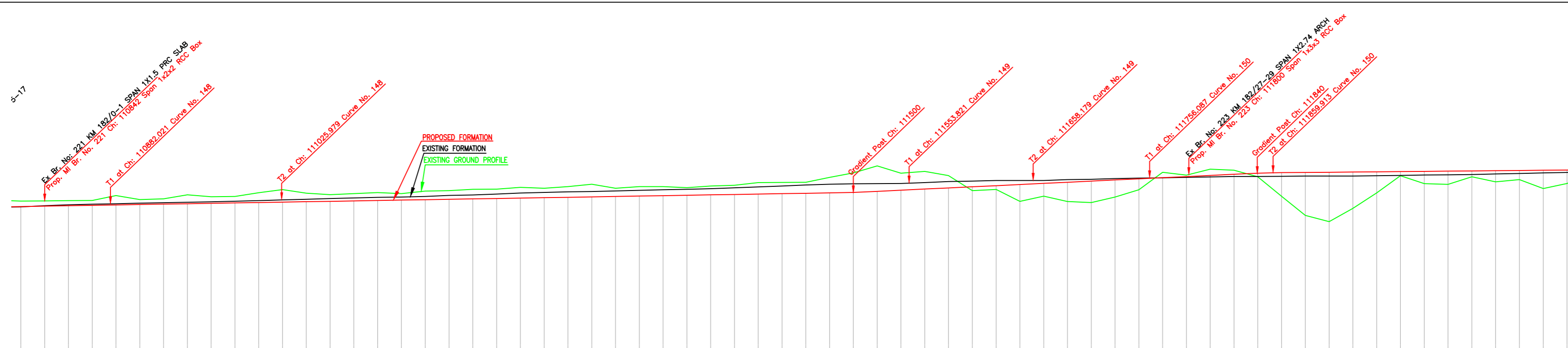


PLAN

NOTE:- MINIMUM HEIGHT OF EMBANKMENT SHALL BE PROVIDED AS PER RELEVANT PARA OF PART 2 OF BID DOCUMENT.

LEGEND

EXIST. IR TRACK	
PROP. DFCC TRACK	
EXIST. LAND BOUNDARY	
DFC LAND BOUNDARY	
WORKS TO BE DONE BY OTHER CONTRACTOR	
PROPOSED BRIDGE	
PROP. STRUCTURE	
EXIST. STRUCTURE	
RIVER/NALA	
WELL	
TREE/TREE CLUSTER	
COMPOUND WALL	
WORK TO BE DISMANTLED	
HIGH TENSION LINE	
POND	
TELEPHONE POLE	
ELECTRIC LINE	
OHE TOWER	
HAND PUMP	
GPS PILLAR	
RAILWAY SIGNAL	
OHE MAST	
RELIGIOUS STRUCTURE	
PIPE LINE CORRIDOR	
ROAD	



L-SECTION

Gradient	Rise 1 in 590		Rise 1 in 210	
Vertical Alignment				
HORIZONTAL ALIGNMENT				
Dist. Between Existing Main Track & Proposed Adjacent Track of DFC	15.770	15.770	15.770	15.770
Cut(-)/Fill(m)	-0.456	-0.435	-0.424	-0.404
Proposed F.L. (m)	274.144	274.236	274.315	274.369
EXISTING F.L. (m)	274.625	274.638	274.661	274.675
Ground Level (m)	274.080	274.140	274.200	274.260
KM	110800	110820	110840	110860

INDICATIVE DRAWING

DEDICATED FREIGHT CORRIDOR CORPORATION OF INDIA LTD.
(A GOVERNMENT OF INDIA ENTERPRISE)

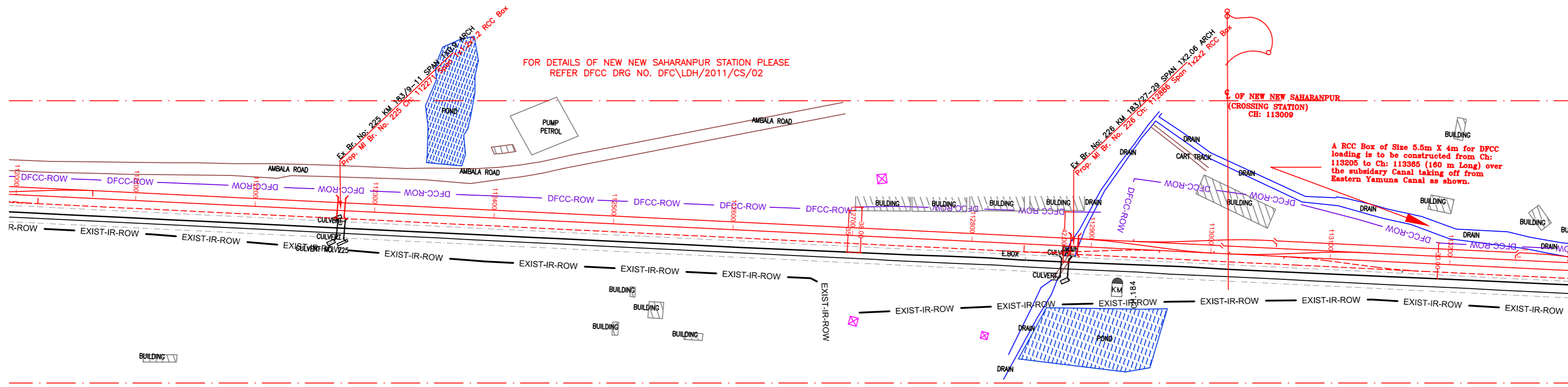
EASTERN CORRIDOR

PROJECT: KHURJA TO PILKHANI
From Km 1367 (ALJN-GZB) to Km 187.5 (SRE-UMB)

CONTRACT PACKAGE - 303

TITLE: PLAN AND PROFILE (Ch: 110900 to Ch: 112100)

SCALE: SURVEY BY: DRAWING NO. GENERAL CONSULTANT **AECOM** AECOM Asia Co. Ltd. 5th Floor, Embassy Towers C-2, DLF Cyber City, DLF Phase II, Gurgaon 122002, India.

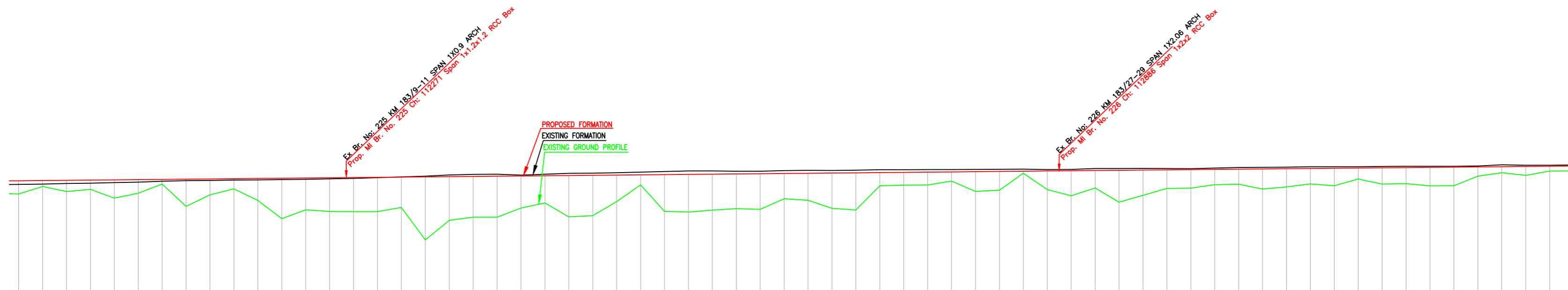


PLAN

NOTE:-
MINIMUM HEIGHT OF EMBANKMENT SHALL BE PROVIDED AS PER RELEVANT PARA OF PART 2 OF BID DOCUMENT.

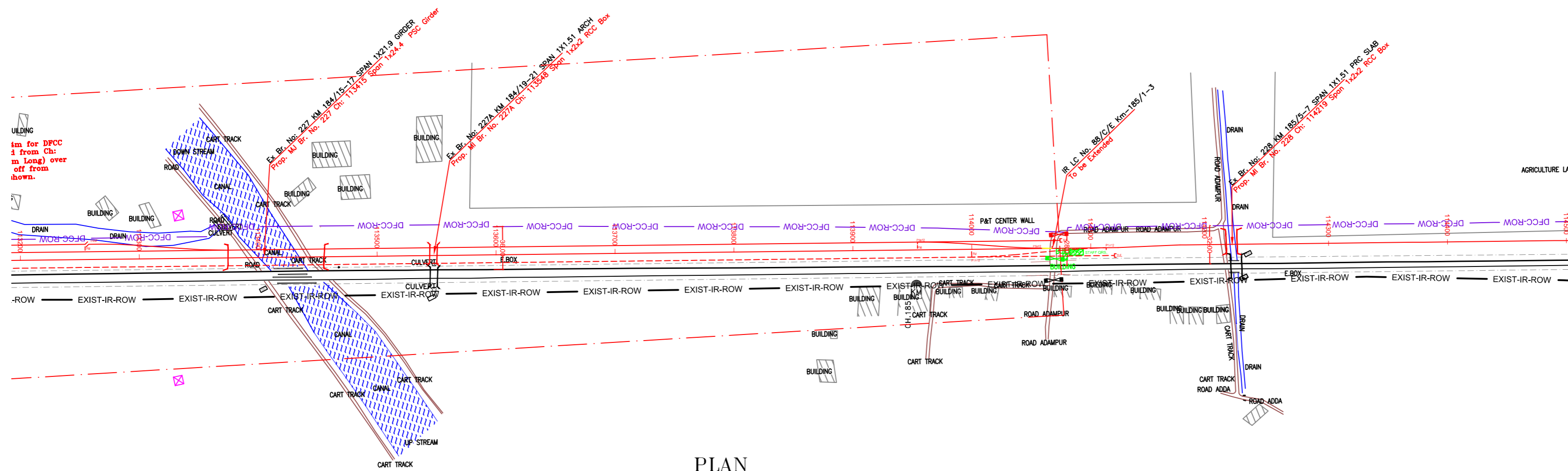
LEGEND

EXIST. IR TRACK	
PROP. DFCC TRACK	
EXIST. LAND BOUNDARY	
DFC LAND BOUNDARY	
WORKS TO BE DONE BY OTHER CONTRACTOR	
PROPOSED BRIDGE	
PROP. STRUCTURE	
EXIST. STRUCTURE	
RIVER/NALA	
WELL	
TREE/TREE CLUSTER	
COMPOUND WALL	
WORK TO BE DISMANTLED	
HIGH TENSION LINE	
POND	
TELEPHONE POLE	
ELECTRIC LINE	
OHE TOWER	
HAND PUMP	
GPS PILLAR	
RAILWAY SIGNAL	
OHE MAST	
RELIGIOUS STRUCTURE	
PIPE LINE CORRIDOR	
ROAD	



L-SECTION

Gradient	Rise 1 in 1040		Rise 1 in 1040		Rise 1 in 1040	
Vertical Alignment						
HORIZONTAL ALIGNMENT						
Dist. Between Existing Main Track & Proposed Adjacent Track of DFC	14.525	14.525	14.525	14.525	14.525	14.525
Cut(-)/Fill(m)	1.094	0.481	0.924	0.758	1.523	1.118
Proposed F.L. (m)	271.128	271.147	271.186	271.186	271.205	271.224
EXISTING F.L. (m)	276.034	276.666	276.916	276.944	276.984	277.031
Ground Level (m)	276.034	276.666	276.916	276.944	276.984	277.031
KM	112000	112020	112040	112060	112080	112100
112120	112140	112160	112180	112200	112220	112240
112260	112280	112300	112320	112340	112360	112380
112400	112420	112440	112460	112480	112500	112520
112540	112560	112580	112600	112620	112640	112660
112680	112700	112720	112740	112760	112780	112800
112820	112840	112860	112880	112900	112920	112940
112960	112980	113000	113020	113040	113060	113080
113100	113120	113140	113160	113180	113200	113220
113240	113260	113280	113300	113320	113340	113360
113380	113400	113420	113440	113460	113480	113500
113520	113540	113560	113580	113600	113620	113640
113660	113680	113700	113720	113740	113760	113780
113800	113820	113840	113860	113880	113900	113920
113940	113960	113980	114000	114020	114040	114060
114080	114100	114120	114140	114160	114180	114200
114220	114240	114260	114280	114300	114320	114340
114360	114380	114400	114420	114440	114460	114480
114500	114520	114540	114560	114580	114600	114620
114640	114660	114680	114700	114720	114740	114760
114780	114800	114820	114840	114860	114880	114900
114920	114940	114960	114980	115000	115020	115040
115060	115080	115100	115120	115140	115160	115180
115200	115220	115240	115260	115280	115300	115320
115340	115360	115380	115400	115420	115440	115460
115480	115500	115520	115540	115560	115580	115600
115620	115640	115660	115680	115700	115720	115740
115780	115800	115820	115840	115860	115880	115900
115920	115940	115960	115980	116000	116020	116040
116060	116080	116100	116120	116140	116160	116180
116200	116220	116240	116260	116280	116300	116320
116340	116360	116380	116400	116420	116440	116460
116480	116500	116520	116540	116560	116580	116600
116620	116640	116660	116680	116700	116720	116740
116780	116800	116820	116840	116860	116880	116900
116920	116940	116960	116980	117000	117020	117040
117060	117080	117100	117120	117140	117160	117180
117200	117220	117240	117260	117280	117300	117320
117340	117360	117380	117400	117420	117440	117460
117480	117500	117520	117540	117560	117580	117600
117620	117640	117660	117680	117700	117720	117740
117780	117800	117820	117840	117860	117880	117900
117920	117940	117960	117980	118000	118020	118040
118060	118080	118100	118120	118140	118160	118180
118200	118220	118240	118260	118280	118300	118320
118340	118360	118380	118400	118420	118440	118460
118480	118500	118520	118540	118560	118580	118600
118620	118640	118660	118680	118700	118720	118740
118780	118800	118820	118840	118860	118880	118900
118920	118940	118960	118980	119000	119020	119040
119060	119080	119100	119120	119140	119160	119180
119200	119220	119240	119260	119280	119300	119320
119340	119360	119380	119400	119420	119440	119460
119480	119500	119520	119540	119560	119580	119600
119620	119640	119660	119680	119700	119720	119740
119780	119800	119820	119840	119860	119880	119900
119920	119940	119960	119980	120000	120020	120040
120060	120080	120100	120120	120140	120160	120180
120200	120220	120240	120260	120280	120300	120320
120340	120360	120380	120400	120420	120440	120460
120480	120500	120520	120540	120560	120580	120600
120620	120640	120660	120680	120700	120720	120740
120780	120800	120820	120840	120860	120880	120900
120920	120940	120960	120980	121000	121020	121040
121060	121080	121100	121120	121140	121160	121180
121200	121220	121240	121260	121280	121300	121320
121340	121360	121380	121400	121420	121440	121460
121480	121500	121520	121540	121560	121580	121600
121620	121640	121660	121680	121700	121720	121740
121780	121800	121820	121840	121860	121880	121900
121920	121940	121960	121980	122000	122020	122040
122060	122080	122100	122120	122140	122160	122180
122200	122220	122240	122260	122280	122300	122320
122340	122360	122380	122400	122420	122440	122460
122480	122500	122520	122540	122560	122580	122600
122620	122640	122660	122680	122700	122720	122740
122780	122800	122820	122840	122860	122880	122900
122920	122940	122960	122980	123000	123020	123040
123060	123080	123100	123120	123140	123160	123180
123200	123220	123240	123260	123280	123300	123320
123340	123360	123380	123400	123420	123440	123460
123480	123500	123520	123540	123560	123580	123600
123620	123640	123660	123680	123700	123720	123740
123780	123800	123820	123840	123860	123880	123900
123920	123940	123960	123980	124000	124020	124040
124060	124080	124100	124120	124140	124160	124180
124200	124220	124240	124260	124280	124300	124320
124340	124360	124380	124400	124420	124440	124460
124480	124500	124520	124540	124560	124580	124600
124620	124640	124660	124680	124700	124720	124740
124780	124800	124820	124840	124860	124880	124900
124920	124940	124960	124980	125000	125020	125040
125060	125080	125100	125120	125140	125160	125180
125200	125220	125240	125260	125280	125300	125320
125340	125360	125380	125400	125420	125440	125460
125480	125500	125520	125540	125560	125580	125600
125620	125640	125660	125680	125700	125720	125740
125780	125800	125820	125840	125860	125880	125900
125920	125940	125960	125980	126000	126020	126040
126060	126080	126100	126120	126140	126160	126180
126200	126220	126240	126260	126280	126300	126320
126340	126360	126380	126400	126420	126440	126460
126480	126500	126520	126540	126560	126580	126600
126620	126640	126660	126680	126700	126720	126740
126780	126800	126820	126840	126860	126880	126900
126920	126940	126960	126980	127000	127020	127040
127060	127080	127100	127120	127140	127160	127180
127200	127220	127240	127260	127280	127300	127320
127340	127360	127380	127400	127420	127440	127460
127480	127500	127520	127540	127560	127580	127600
127620	127640	127660	127680	127700	127720	127740
127780	127800	127820	127840	127860	127880	127900
127920	127940	127960	127980	128000	128020	128040
128060	128080	128100	128120	128140	128160	128180
128200	128220	128240	128260	128280	128300	128320
128340	128360	128380	128400	128420	128440	128460
128480	128500	128520	128540	128560	128580	128600
128620	128640	128660	128680	128700	128720	128740
128780	128800	128820	128840	128860	128880	128900
128920	128940	128960	128980	129000	129020	129040
129060	129080	129100	129120	129140	129160	129180
129200	129220	129240	129260	129280	129300	129320
129340	129360	129380	129400	129420	129440	129460
129480	129500	129520	129540	129560	129580	129600
129620	129640	129660	129680	129700	129720	129740
129780	129800	129820	129840	129860	129880	129900
12992						

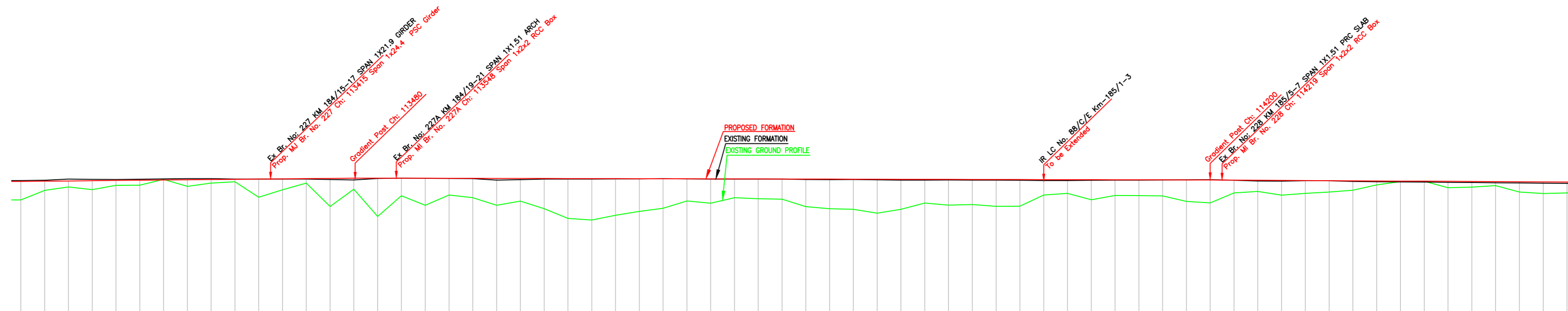


PLAN

NOTE:-
MINIMUM HEIGHT OF EMBANKMENT SHALL BE PROVIDED AS PER RELEVANT PARA OF PART 2 OF BID DOCUMENT.

LEGEND

EXIST. IR TRACK	—
PROP. DFCC TRACK	—
EXIST. LAND BOUNDARY	—
DFC LAND BOUNDARY	—
WORKS TO BE DONE BY OTHER CONTRACTOR	—
PROPOSED BRIDGE	—
PROP. STRUCTURE	—
EXIST. STRUCTURE	—
RIVER/NALA	—
WELL	—
TREE/TREE CLUSTER	—
COMPOUND WALL	—
WORK TO BE DISMANTLED	—
HIGH TENSION LINE	—
POND	—
TELEPHONE POLE	—
ELECTRIC LINE	—
OHE TOWER	—
HAND PUMP	—
GPS PILLAR	—
RAILWAY SIGNAL	—
OHE MAST	—
RELIGIOUS STRUCTURE	—
PIPE LINE CORRIDOR	—
ROAD	—



L-SECTION

Gradient	Rise 1 in 1040	Fall 1 in 4865
Vertical Alignment		
HORIZONTAL ALIGNMENT		
Dist. Between Existing Main Track & Proposed Adjacent Track of DFC	14.525	14.525
Cut-/Fill(m)	1.560	1.560
Proposed F.L (m)	276.360	276.360
EXISTING F.L (m)	276.360	276.360
Ground Level (m)	276.360	276.360
KM	113200	114500

INDICATIVE DRAWING

DEDICATED FREIGHT CORRIDOR CORPORATION OF INDIA LTD.
(A GOVERNMENT OF INDIA ENTERPRISE)

EASTERN CORRIDOR

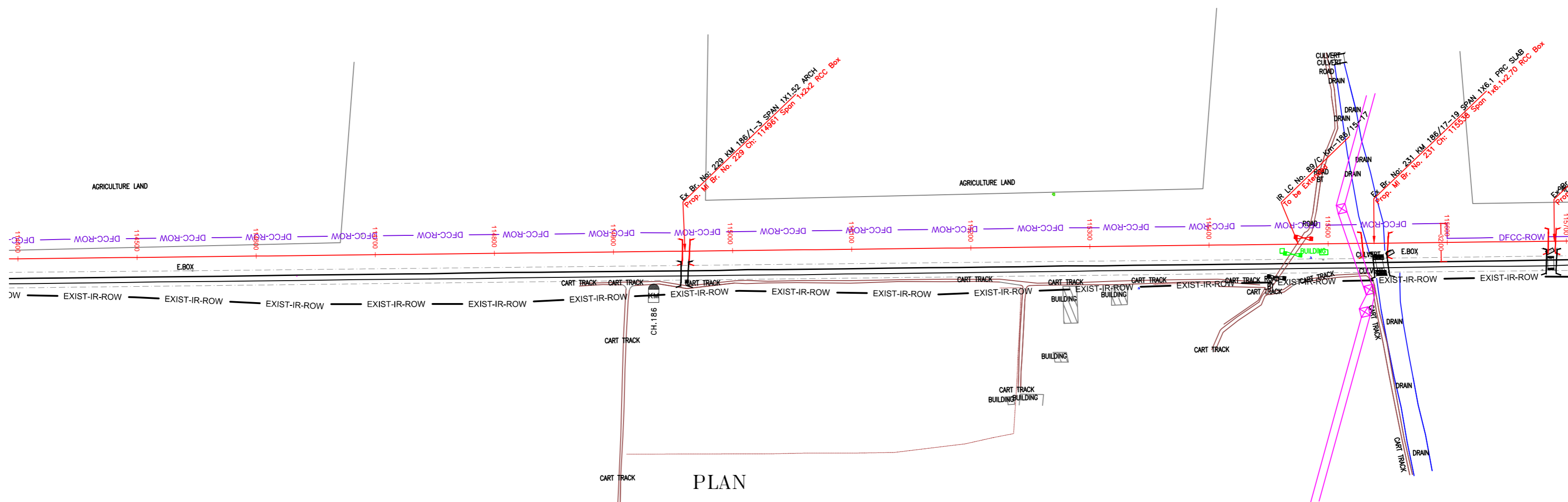
PROJECT
KHURJA TO PILKHANI
From Km 1367 (ALJN-GZB) to Km 187.5 (SRE-UMB)

CONTRACT PACKAGE - 303

TITLE
PLAN AND PROFILE (Ch: 113300 to Ch: 114500)

SCALE
DRAWING NO.

SURVEY BY
GENERAL CONSULTANT
AECOM
AECOM Asia Co. Ltd.
5th Floor, Unitary Tower C DLF Cyber City
DLF Phase II Gurgaon 122002, India

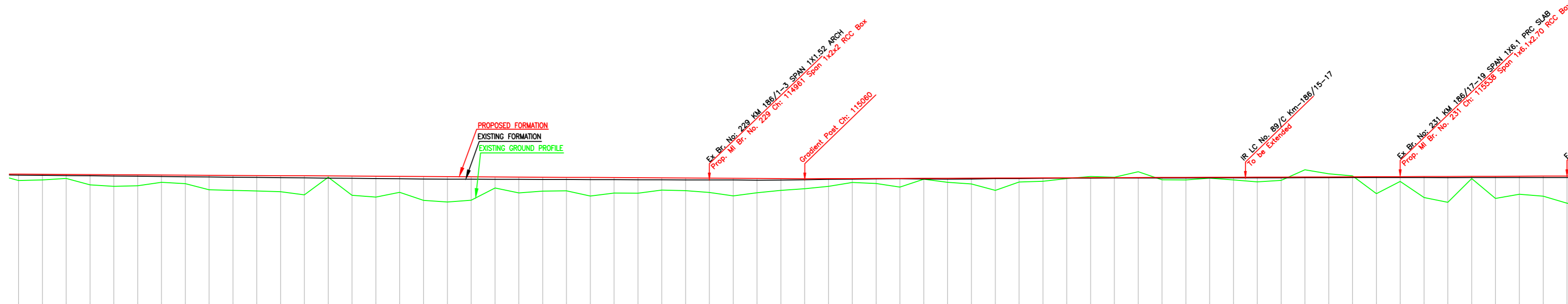


PLAN

NOTE:-
MINIMUM HEIGHT OF EMBANKMENT SHALL
BE PROVIDED AS PER RELEVANT PARA OF
PART 2 OF BID DOCUMENT.

LEGEND

EXIST. IR TRACK	
PROP. DFC TRACK	
EXIST. LAND BOUNDARY	
DFC LAND BOUNDARY	
WORKS TO BE DONE BY OTHER CONTRACTOR	
PROPOSED BRIDGE	
PROP. STRUCTURE	
EXIST. STRUCTURE	
RIVER/NALA	
WELL	
TREE/TREE CLUSTER	
COMPOUND WALL	
WORK TO BE DISMANTLED	
HIGH TENSION LINE	
POND	
TELEPHONE POLE	
ELECTRIC LINE	
OHE TOWER	
HAND PUMP	
GPS PILLAR	
RAILWAY SIGNAL	
OHE MAST	
RELIGIOUS STRUCTURE	
PIPE LINE CORRIDOR	
ROAD	



L-SECTION

Gradient	Fall 1 in 1723		Rise 1 in 2811	
Vertical Alignment				
HORIZONTAL ALIGNMENT				
Dist. Between Existing Main Track & Proposed Adjacent Track of DFC	16.400	16.400	16.400	16.400
Cut(-)/Fill(m)	0.534	16.425	16.475	16.483
Proposed F.L. (m)	276.266	276.275	276.284	276.293
EXISTING F.L. (m)	276.266	276.275	276.284	276.293
Ground Level (m)	276.266	276.275	276.284	276.293
KM	114400	114420	114440	114460

INDICATIVE DRAWING

DEDICATED FREIGHT CORRIDOR CORPORATION OF INDIA LTD.
(A CORPORATION OF INDIA ENTERPRISE)

EASTERN CORRIDOR

PROJECT
KHURJA TO PILKHANI
From Km 1367 (ALJN-GZB) to Km 187.5 (SRE-UMB)

CONTRACT PACKAGE - 303

TITLE
PLAN AND PROFILE (Ch: 114500 to Ch: 115700)

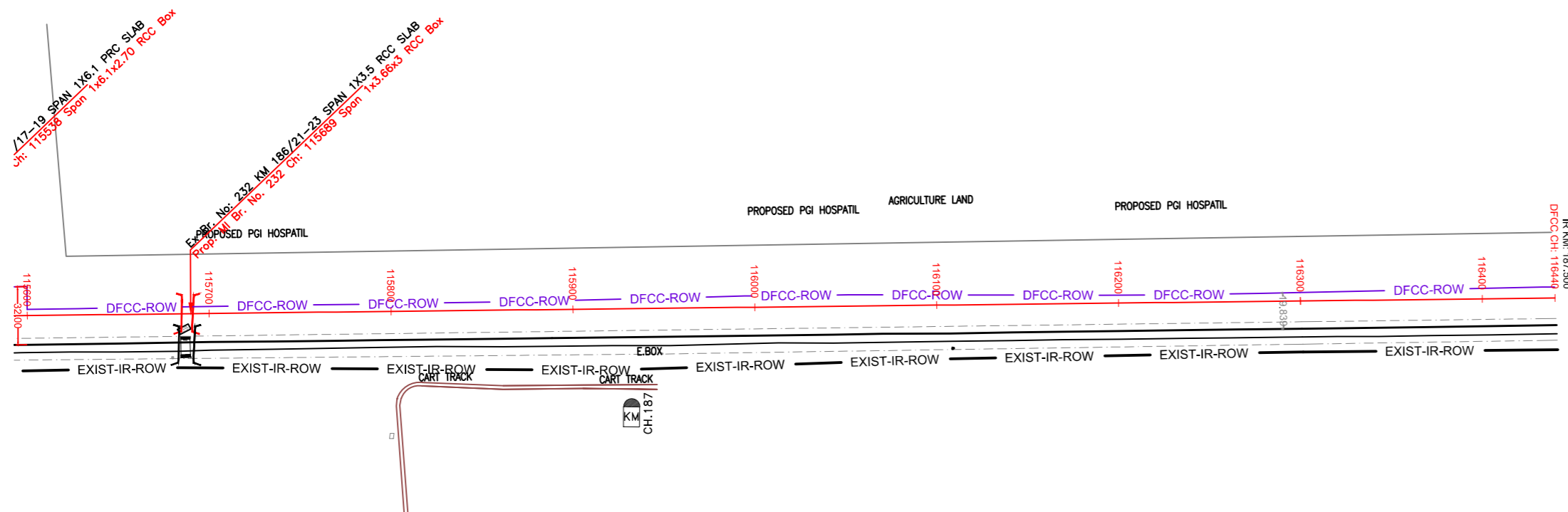
SCALE
DRAWING NO.

SURVEY BY
GENERAL CONSULTANT
AECOM
AECOM Asia Co. Ltd.
5th Floor, Century Tower C DLF Cyber City
DLF Phase II Gurgaon 122002, India

KHURJA

PILKHANI

PROJECT SHEET NO. 190

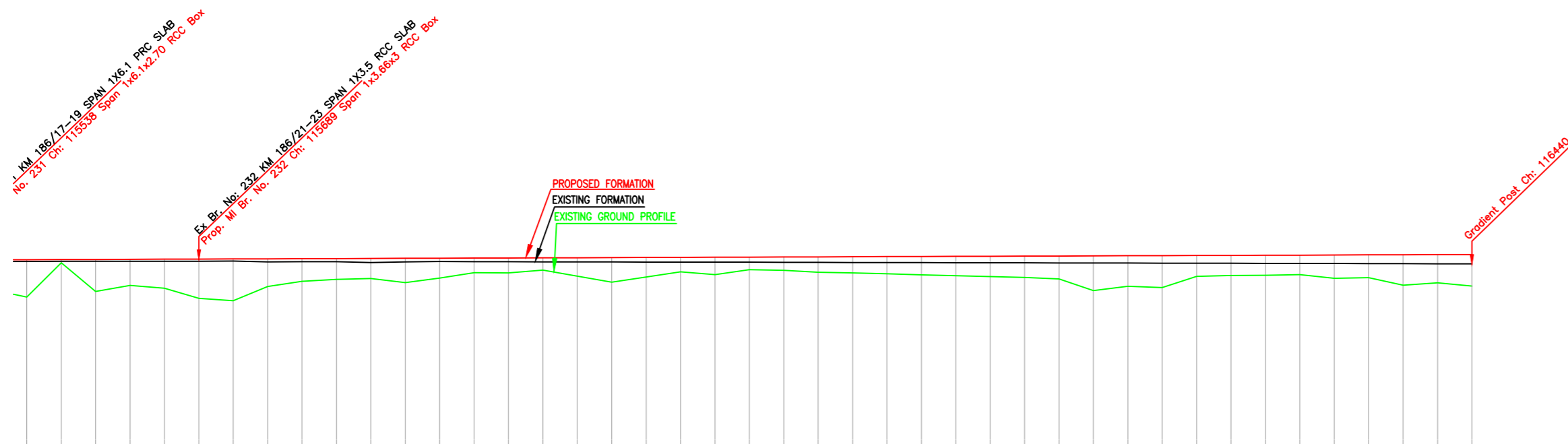


PLAN

NOTE:-
MINIMUM HEIGHT OF EMBANKMENT SHALL
BE PROVIDED AS PER RELEVANT PARA OF
PART 2 OF BID DOCUMENT.

LEGEND

EXIST. IR TRACK	
PROP. DFCC TRACK	
EXIST. LAND BOUNDARY	
DFC LAND BOUNDARY	
WORKS TO BE DONE BY OTHER CONTRACTOR	
PROPOSED BRIDGE	
PROP. STRUCTURE	
EXIST. STRUCTURE	
RIVER/NALA	
WELL	
TREE/TREE CLUSTER	
COMPOUND WALL	
WORK TO BE DISMANTLED	
HIGH TENSION LINE	
POND	
TELEPHONE POLE	
ELECTRIC LINE	
OHE TOWER	
HAND PUMP	
GPS PILLAR	
RAILWAY SIGNAL	
OHE MAST	
RELIGIOUS STRUCTURE	
PIPE LINE CORRIDOR	
ROAD	



Gradient	Rise 1 in 2811	
Vertical Alignment	Rise 1 in 2811	
HORIZONTAL ALIGNMENT		
Dist. Between Existing Main Track & Proposed Adjacent Track of DFC	16.081	278.325
Cut(-)/Fill(m)	2.188	15.853
Proposed F.L. (m)	278.094	278.325
EXISTING F.L. (m)	275.926	277.977
Ground Level (m)	275.926	277.977
KM	115600	116440

L-SECTION

INDICATIVE DRAWING

DEDICATED FREIGHT CORRIDOR CORPORATION OF INDIA LTD.
(A GOVERNMENT OF INDIA ENTERPRISE)

EASTERN CORRIDOR

PROJECT
KHURJA TO PILKHANI
From Km 1367 (ALJN-GZB) to Km 187.5 (SRE-UMB)

CONTRACT PACKAGE - 303

TITLE
PLAN AND PROFILE (Ch: 115700 to Ch: 116440)

SCALE
DRAWING NO.

SURVEY BY
GENERAL CONSULTANT
AECOM
AECOM Asia Co. Ltd.
5th Floor, Gateway Tower C DLF Cyber City
DLF Phase II Gurgaon 122002, India